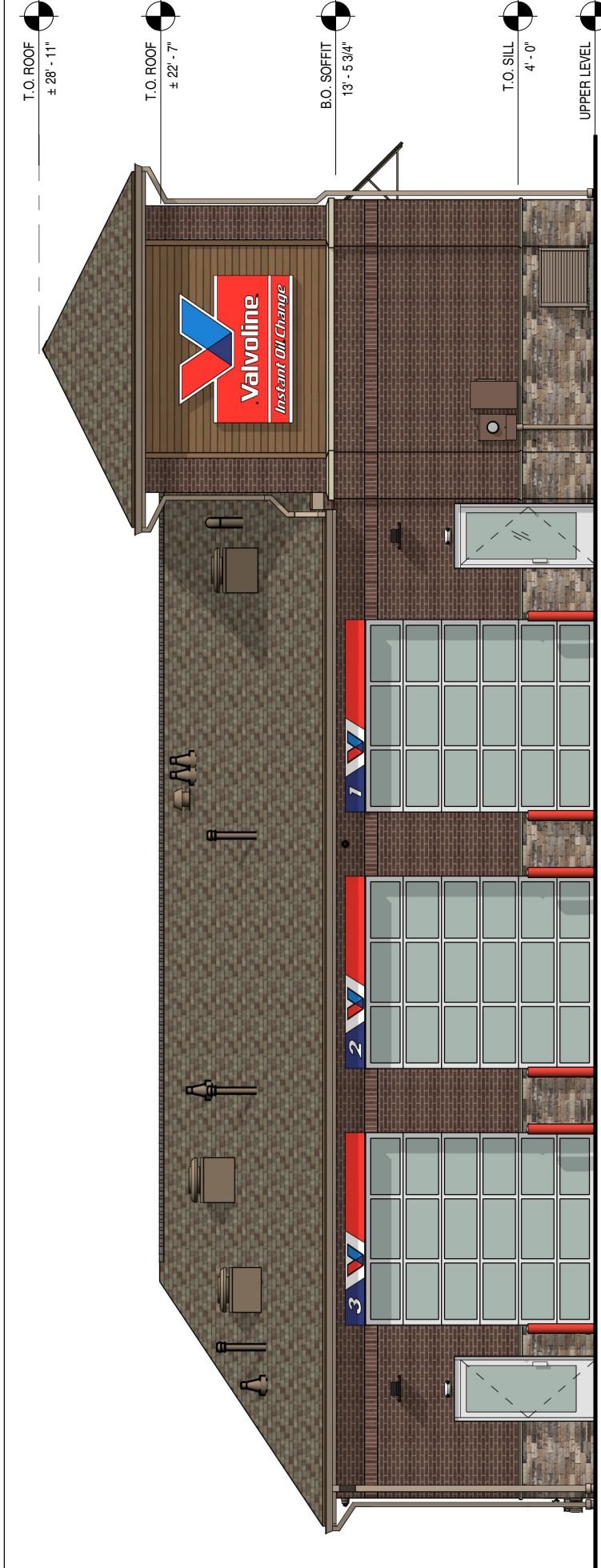


ISSUE RECORD	11/12/2021	DESIGN REVIEW WITH CITY
DATE	04/06/2022	FINISH REVISIONS
	04/12/2022	FINISH REVISIONS

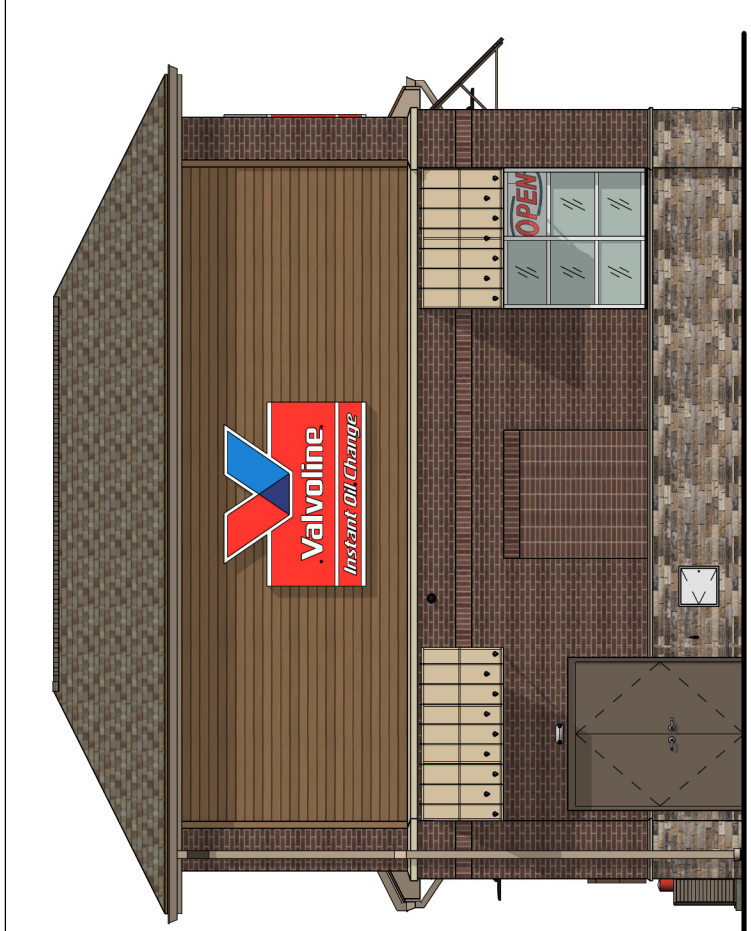
RENDERED ELEVATIONS -
4249 ROSWELL RD,
MARIETTA, GA 30062



Project No: 20200946.0



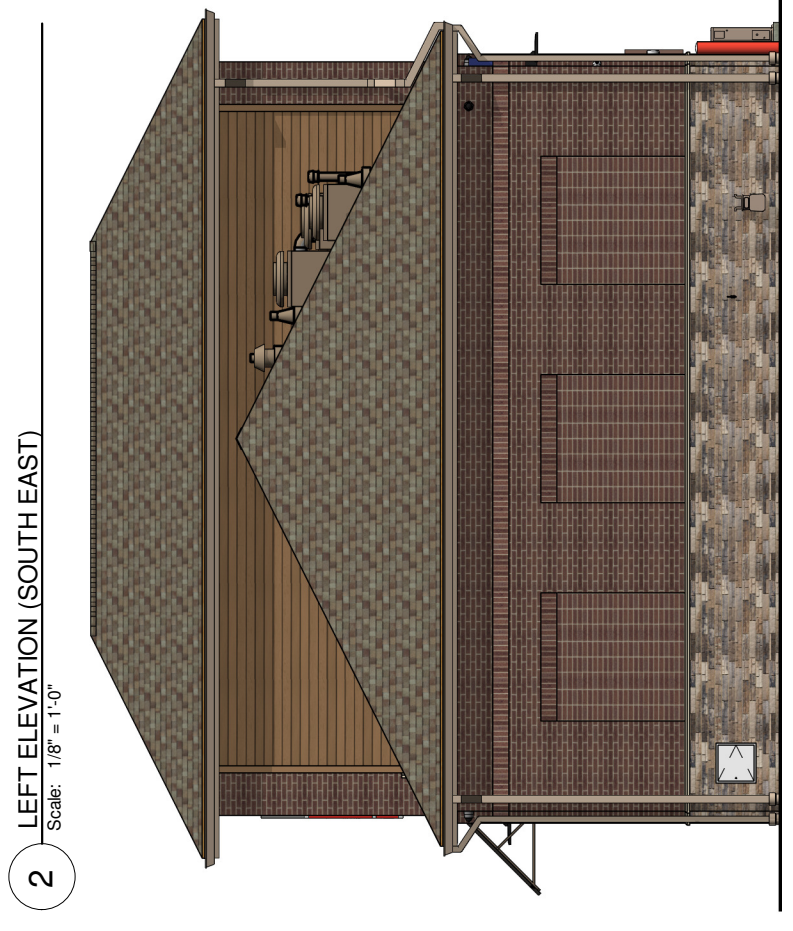
1 REAR ELEVATION (SOUTH WEST)
 Scale: 1/8" = 1'-0"



2 LEFT ELEVATION (SOUTH EAST)
 Scale: 1/8" = 1'-0"



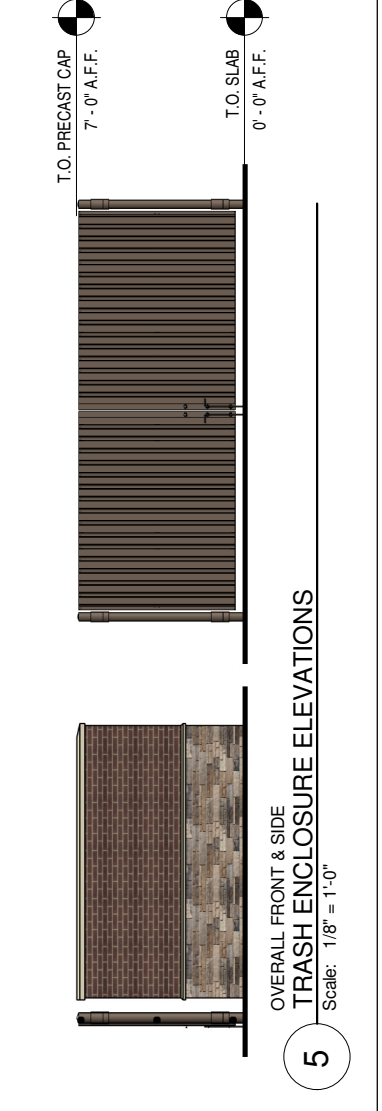
3 FRONT ELEVATION (NORTH EAST)
 Scale: 1/8" = 1'-0"



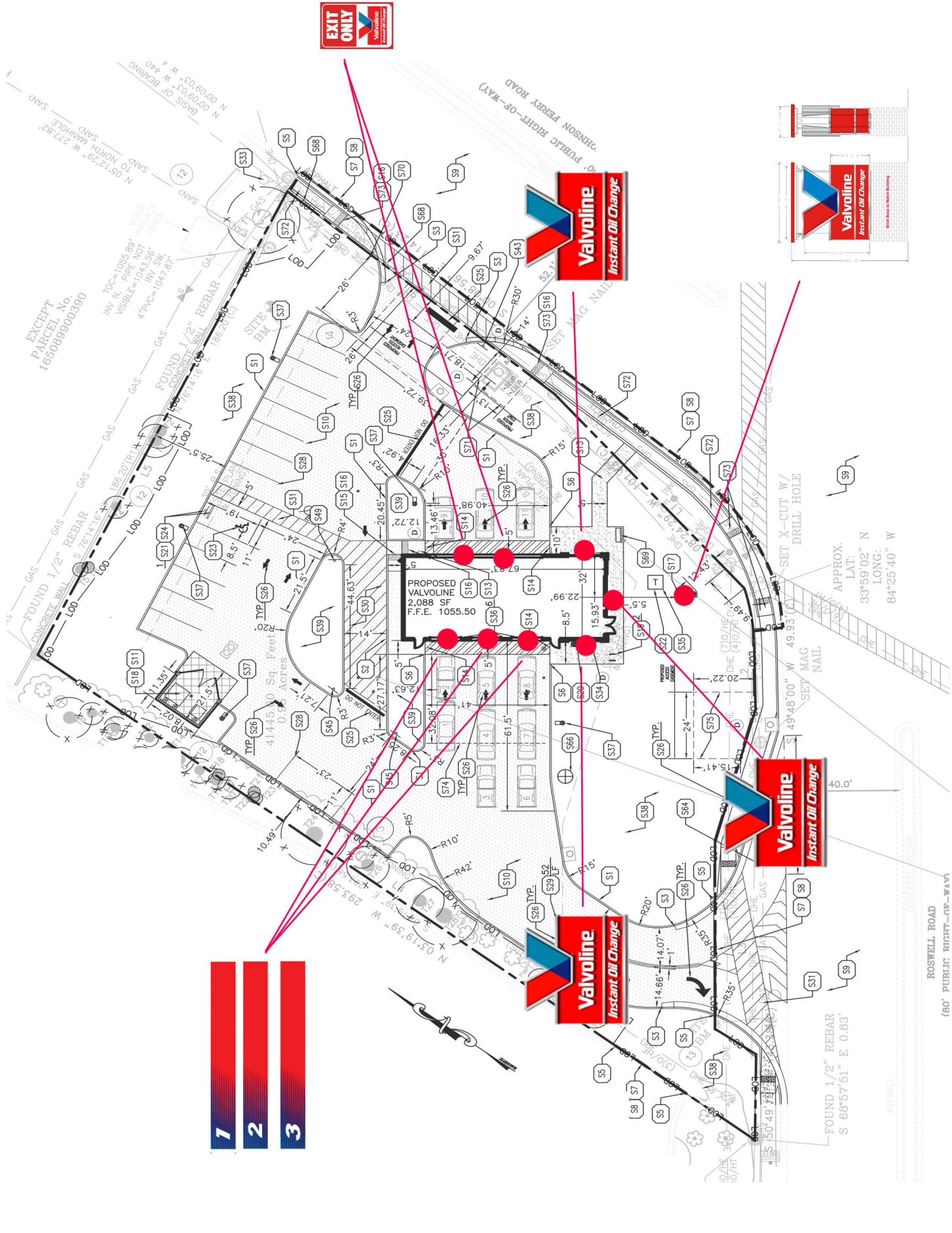
4 RIGHT ELEVATION (NORTH WEST)
 Scale: 1/8" = 1'-0"

EXTERIOR FINISHES - STONE / BRICK

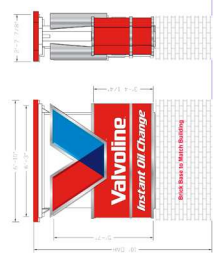
FIBER CEMENT BOARD LAP SIDING WITH TRIM BOARDS:	FACTORY PRIMED, ONE COAT A-100 LATEX PRIMER ON BACK AND CUT EDGES. TWO COATS A-100 EXTERIOR LATEX SATIN. COLOR: SHERWIN WILLIAMS SW #6110 STEADY BROWN
STONE WAINSCOT: (GRADE TO PRECAST SILL) OR TAN COLOR COMPATIBLE WITH FACE BRICK - BASED ON AVAILABILITY (NO CREAM OR WHITE)	DRY STACK STONE VENEER - "RED/TAN/GRAY BLEND" FACE BRICK (ABOVE WAINSCOT): BRICK SOLDIER COURSE: THIN BRICK VENEER: (PIERS FOR UPPER PORTION OF TOWER)
PRECAST SILL: (REFER TO SILL PROFILE)	CUSTOM CAST STONE - "LIGHT BUFF" LEHIGH STANDARD KIT - "BEIGE" (NO CREAM OR WHITE)
MORTAR:	ALL MASONRY SURFACES SHALL BE TREATED w/ SEALER.
MASONRY SEALER:	FIRESTONE UNA-CLAD KYNAR 500 / HYLAR METAL 5000 FLUOROCARBON STEEL "CHAMPAGNE METALLIC", UNDERSIDE & FRAME TO BE PAINTED SW 6152 "SUPERIOR BRONZE"
STANDING SEAM AWNING:	OWENS CORNING DURATION SERIES "DRIFTWOOD"
ROOF SHINGLES:	
MISC. ROOF VENTS, FANS, ETC.	FIELD PAINT SHERWIN-WILLIAMS SW7046 "ANONYMOUS" BERRIDGE - "SIERRA TAN"
GUTTER, DOWNSPOUTS, FASCIA, EXTERIOR SOFFIT, & EXPOSED TRIM	2x4 1/2" KAWNEER TRIFAB VG 451T SERIES CLEAR ANODIZED ALUMINUM STOREFRONT SYSTEM w/ 1" INSULATED GLAZING.
STOREFRONT SYSTEM:	FIELD PAINT SHERWIN-WILLIAMS SW-7515 "HOMESTEAD BROWN" - PROVIDE MOCK-UP AND VERIFY COLOR W/OWNER.
H.M. DOORS & FRAMES:	CLEAR ANODIZED ALUMINUM
O.H. DOOR FINISH:	STAINLESS STEEL
ACCESS PANEL:	



5 OVERALL FRONT & SIDE TRASH ENCLOSURE ELEVATIONS
 Scale: 1/8" = 1'-0"



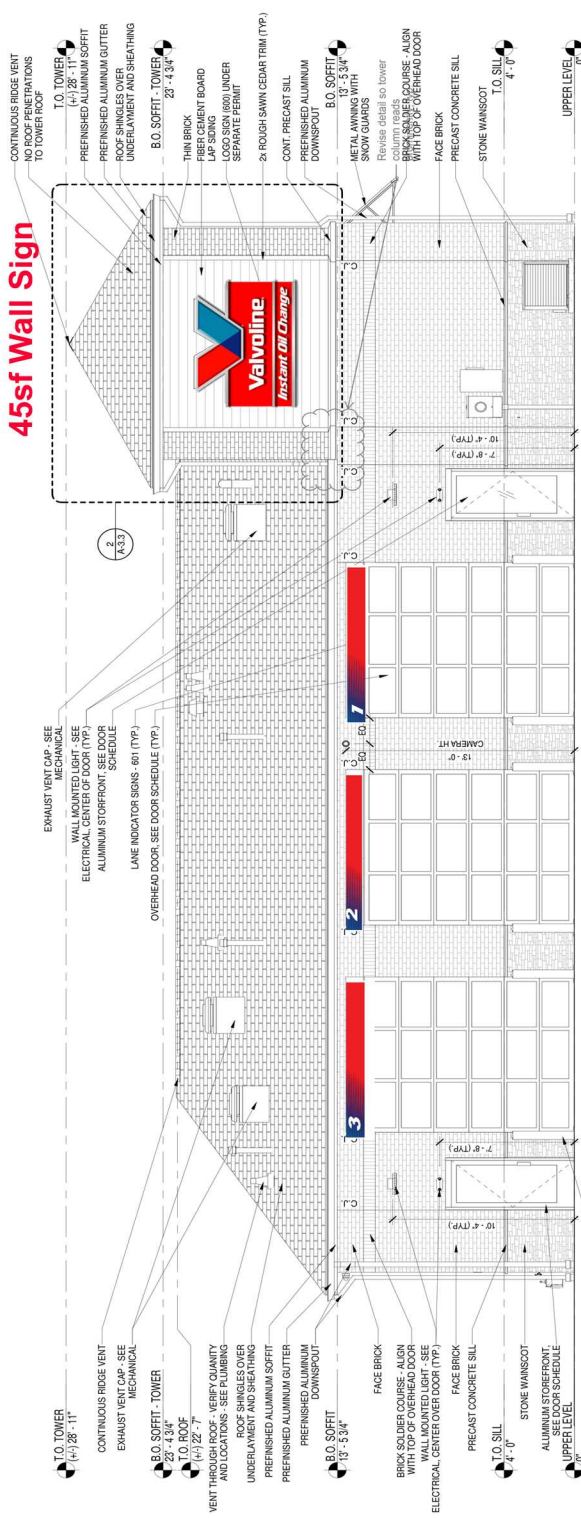
- 1**
- 2**
- 3**



LOCATION: **4249 Roswell rd, Marietta GA** APPROVED BY: _____ DATE: _____

CD - This is the old
 information
 prototype distribution

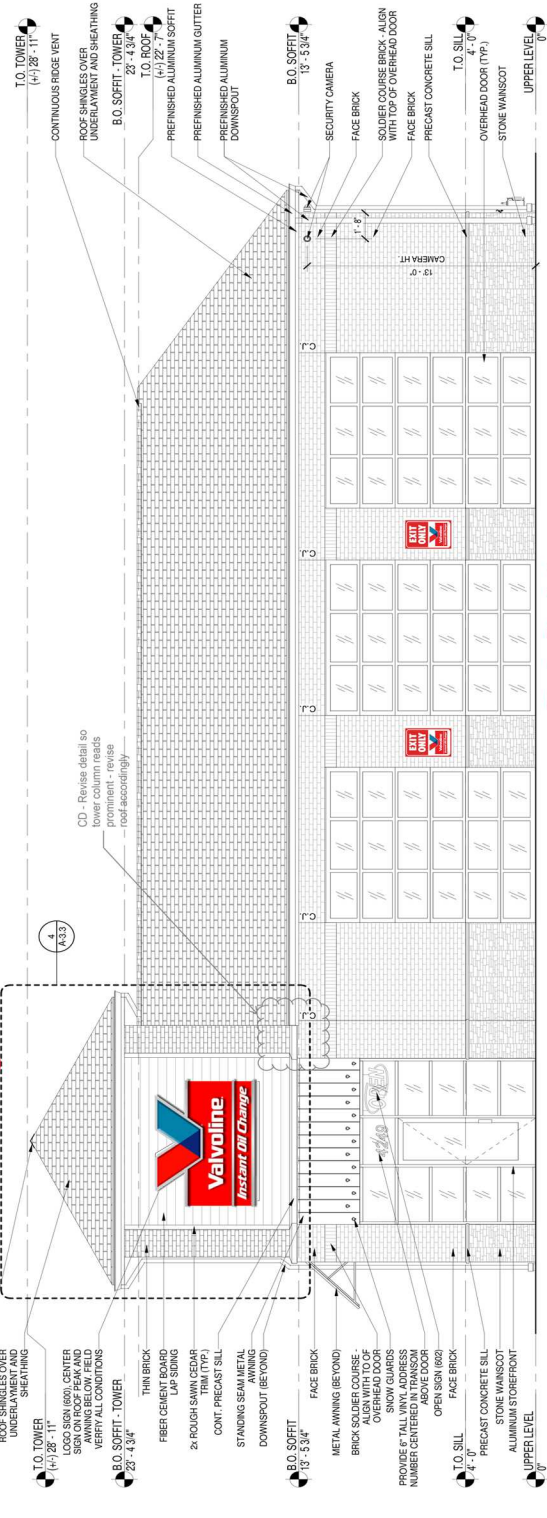
45sf Wall Sign



Bay Indicators

1. EXTERIOR ELEVATION (OVERALL REAR)
 A-3.2 Scale: 1/4" = 1'-0"

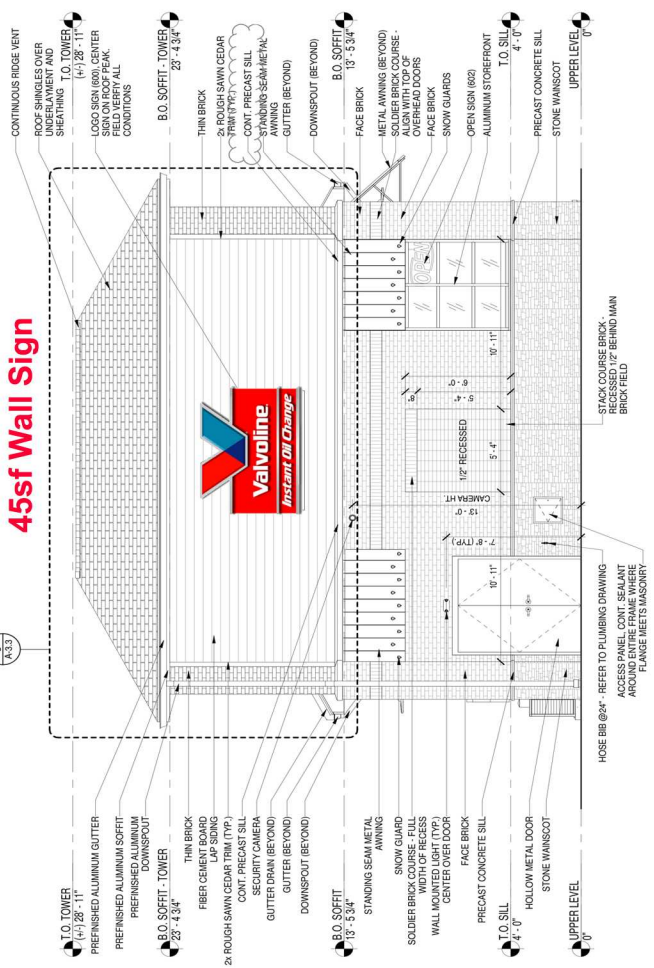
45sf Wall Sign



Exit Only's

1. EXTERIOR ELEVATION (OVERALL FRONT)
 A-3.1 Scale: 1/4" = 1'-0"

45sf Wall Sign



2. EXTERIOR ELEVATION (OVERALL RIGHT)
 A-3.1 Scale: 1/4" = 1'-0"

LOCATION:

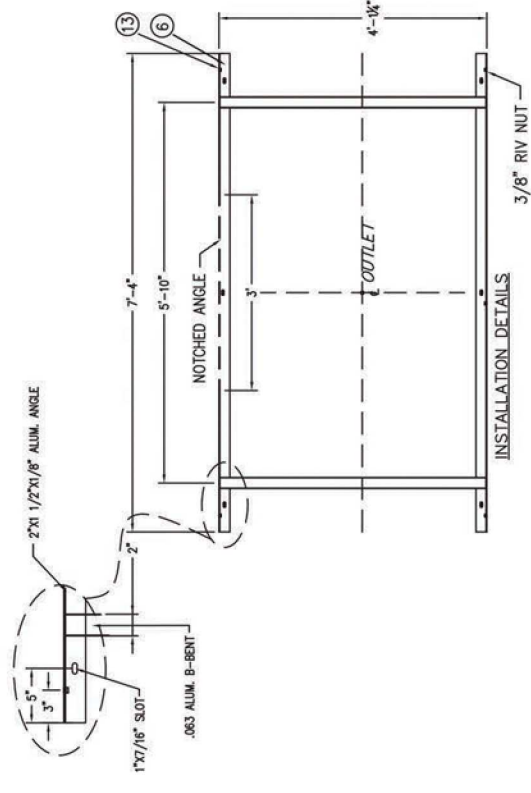
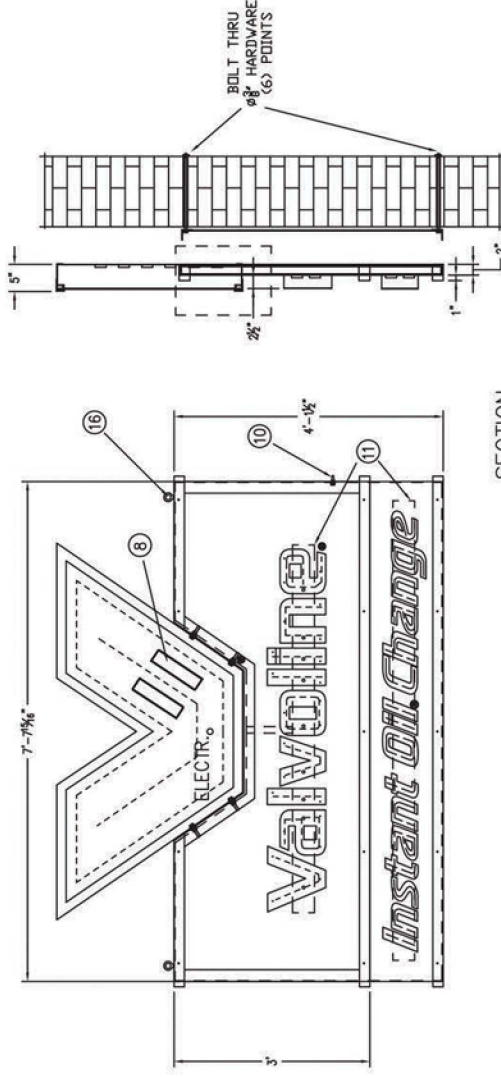
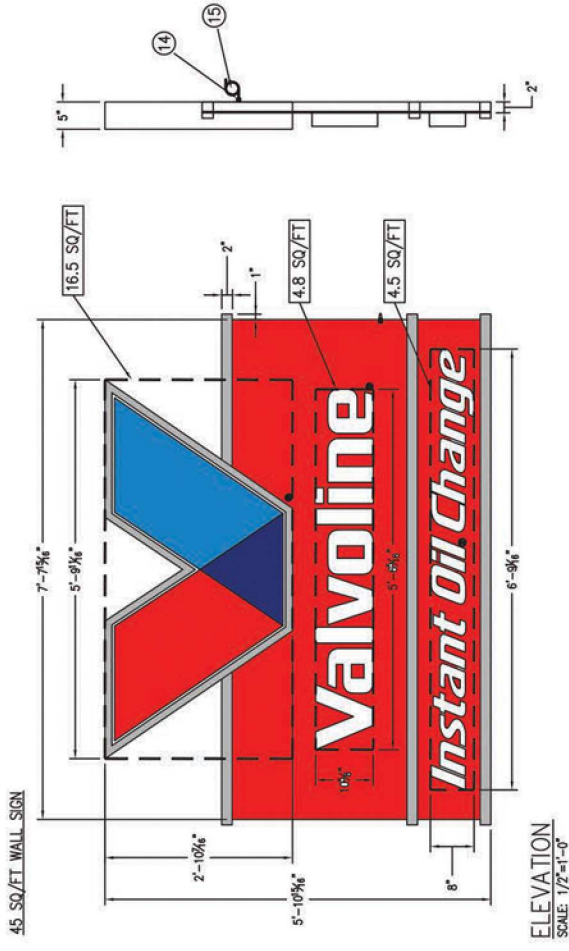
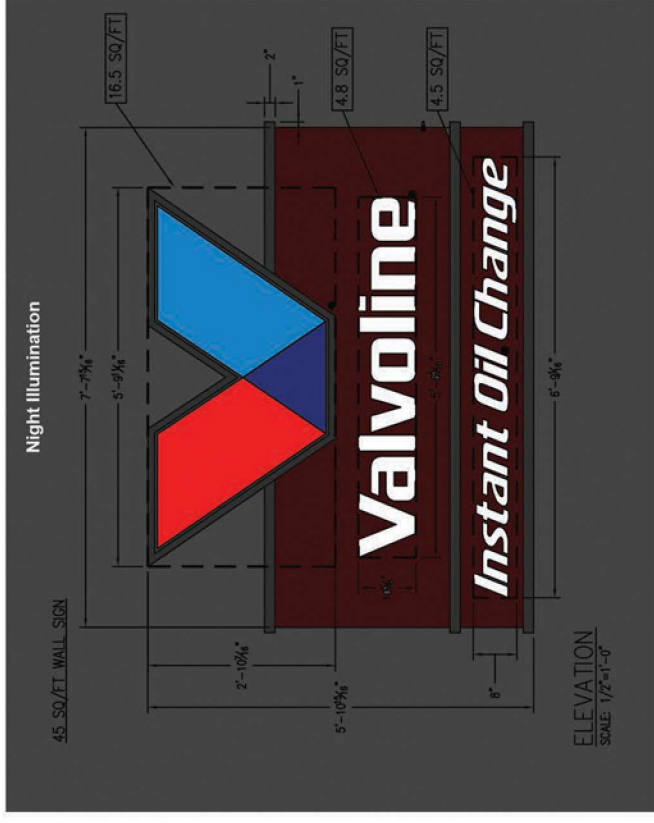
4249 Roswell rd, Marietta GA

APPROVED BY:

DATE:



VIOC 45sf FLAT WALL SIGN
 (INDIVIDUAL MOUNTED LETTERS ON OPAQUE BACKGROUND)



LOCATION:

4249 Roswell rd, Marietta GA

APPROVED BY:

DATE:

Non-Illuminated

VALVOLINE INSTANT OIL CHANGE FACILITY REVITALIZATION KIT OF PARTS

BAY INDICATORS

MATERIALS

- Paint and Vinyl Film on Aluminum

COLORS

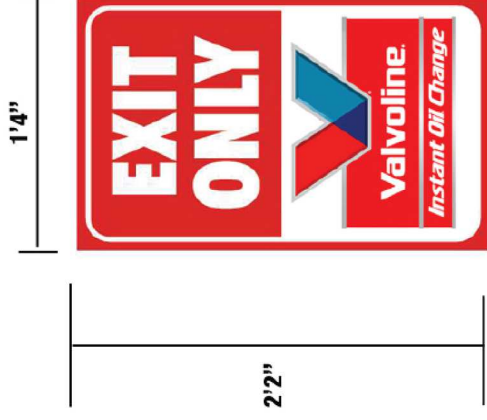
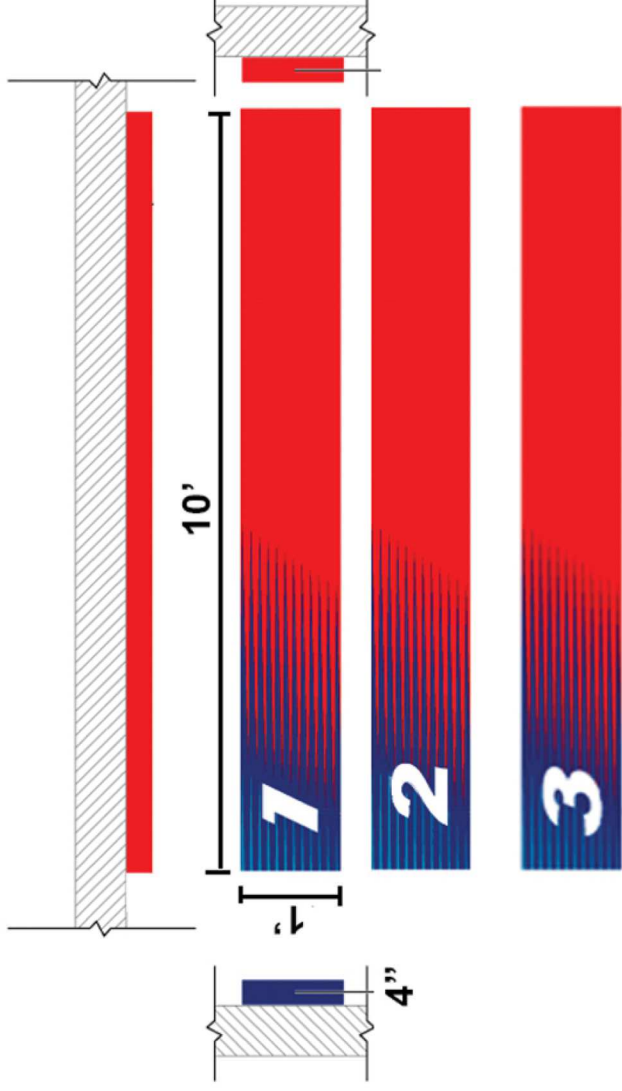
- Valvoline Red
- Valvoline Blue
- Valvoline Light Blue
- White

ILLUMINATION

- External face only lights

PROTOTYPE LOCATION

- Winchess
- Richwoodville Rd.

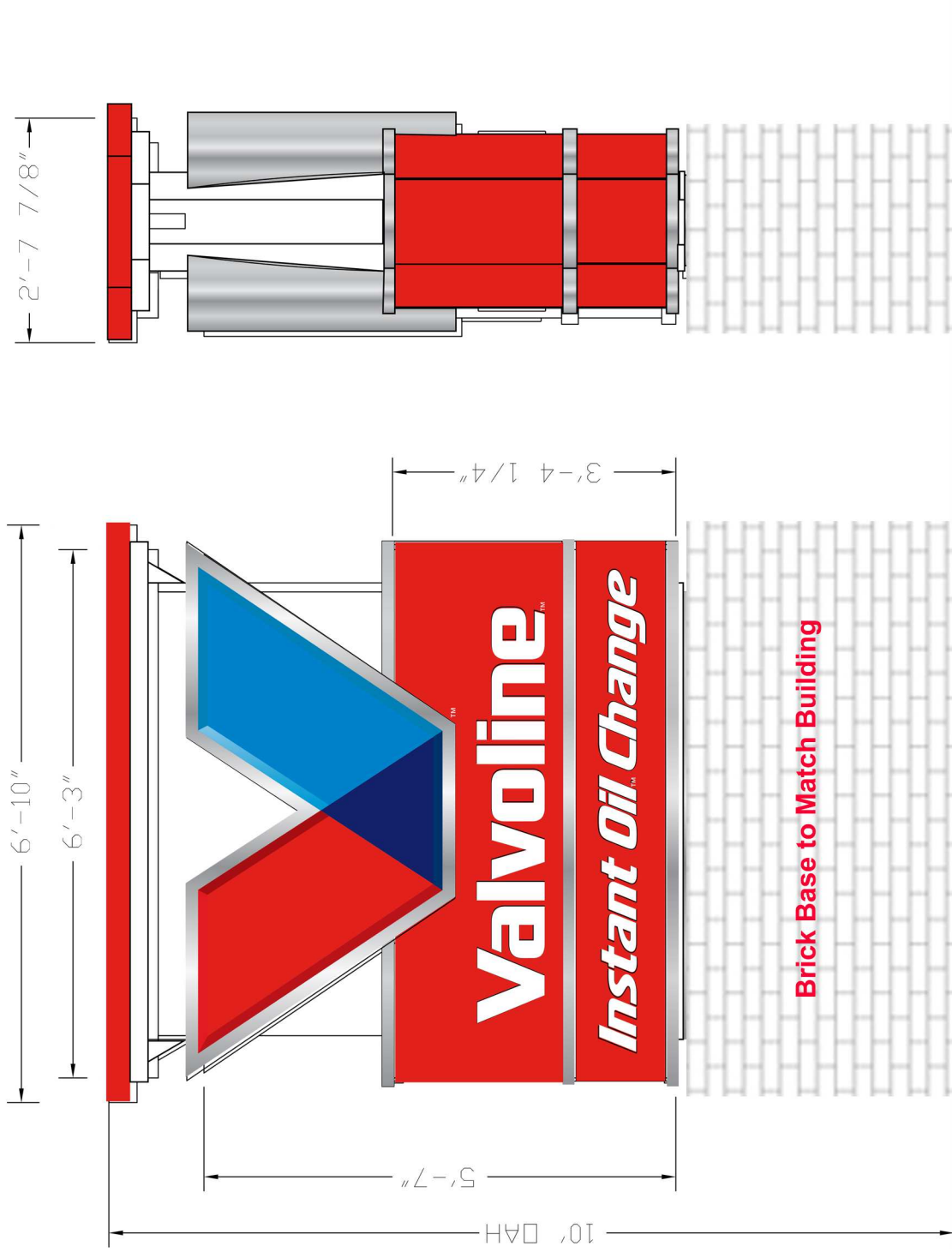
LOCATION:

4249 Roswell rd, Marietta GA

APPROVED BY:

DATE:

35sf Internally Lit Monument



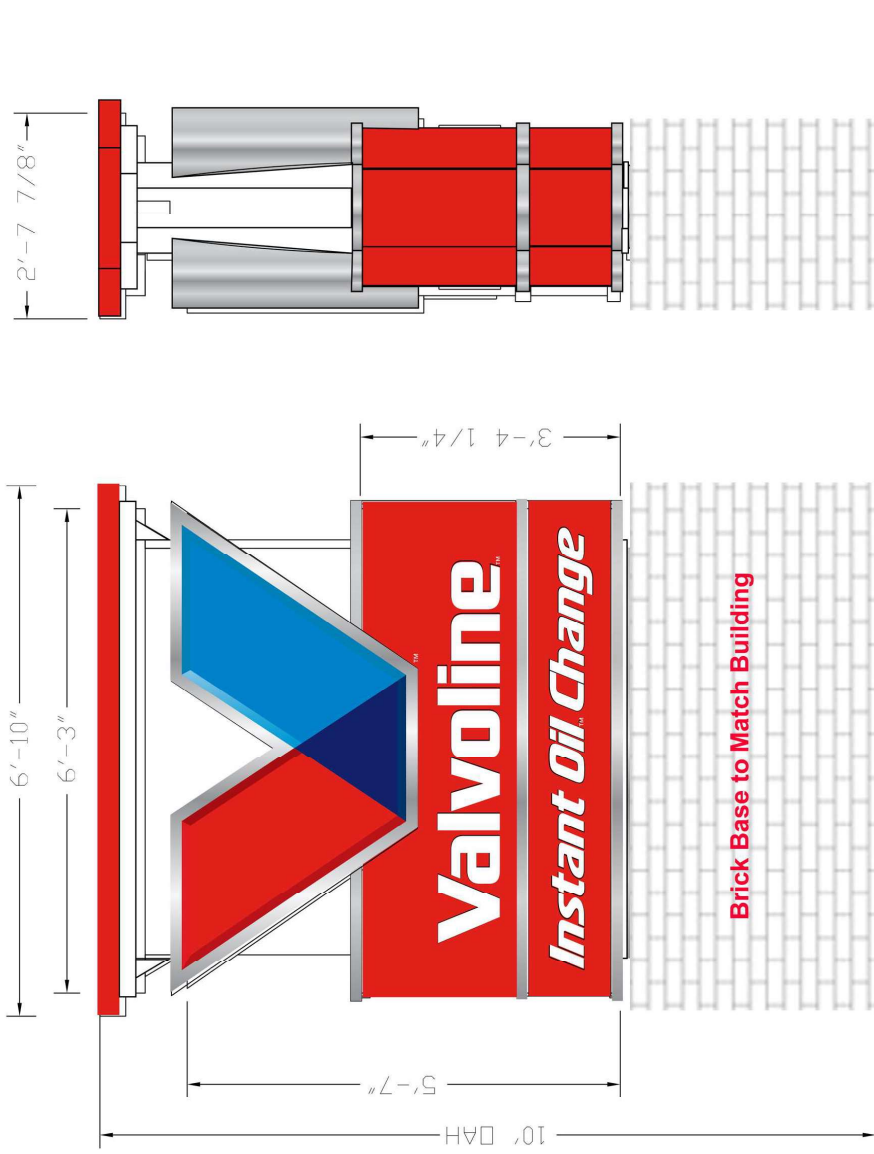
LOCATION:

4249 Roswell rd, Marietta GA

APPROVED BY:

DATE:

35sf Internally Lit Monument

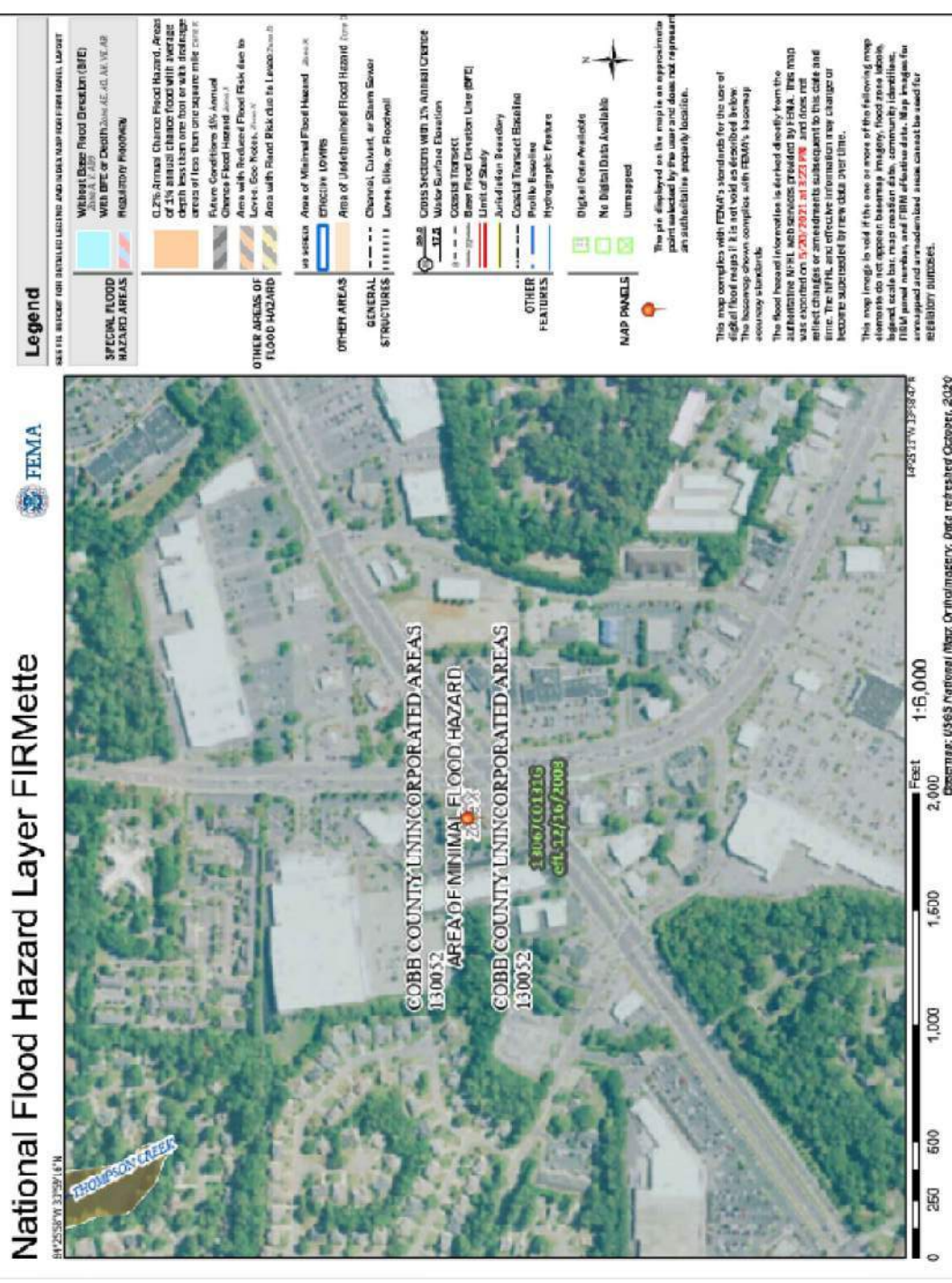


LOCATION:

4249 Roswell rd, Marietta GA

APPROVED BY:

DATE:



FLOOD INSURANCE RATE MAP (N.T.S)

DRAWING INDEX AND ISSUANCE LOG

SHEET #	SHEET NAME	DATE	ISSUE
C-00	COVER SHEET	12/07/2021	OWNER REVIEW SET
C-10	SITE PLAN	12/17/2021	1ST SUBMITTAL
C-10	SITE PLAN	2/01/2022	2ND SUBMITTAL
C-10	SITE PLAN	2/10/2022	3RD SUBMITTAL
C-11	FIRE PLAN		
C-20	DEMOLITION PLAN		
C-20	PAVING PLAN		
C-30	GRADING PLAN		
C-40	PRE-DRAINAGE PLAN		
C-41	POST-DRAINAGE PLAN		
C-42	DRAINAGE PLAN		
C-43	STORM PROFILES		
C-50	EROSION CONTROL PHASE I		
C-51	EROSION CONTROL PHASE II		
C-52	EROSION CONTROL PHASE III		
C-53	EROSION CONTROL NOTES		
C-54	EROSION CONTROL DETAILS		
C-55	EROSION CONTROL DETAILS		
C-60	UTILITY PLAN		
C-70	DETAILS		
C-71	DETAILS		
C-72	DETAILS		
C-73	DETAILS		
C-74	DETAILS		
C-75	DETAILS		
C-80	PHOTOMETRIC PLAN		
L-10	TREE PRESERVATION PLAN		
L-11	LANDSCAPE PLAN		
L-12	LANDSCAPE DETAILS		
IR-10	IRRIGATION PLAN		
IR-11	IRRIGATION DETAILS		
ATTACHMENT	ALTA SURVEY		

OWNER'S Pre-Construction P.M.
 Valvoline Instant Oil Change
 100 Valvoline Way
 Lexington, KY 40509
 Bus: (859) 221-8641
 Bus: (804) 840-1992

CIVIL P.M.
 GreenbergFarrow
 1430 West Peachtree St. NW
 SUITE 200
 ATLANTA, GA 30309
 BUS: (404) 210-7148

STRUCTURAL ENGINEER
 GreenbergFarrow
 Jason Koffke
 1430 East Main Street, Suite 410
 Somerville, NJ 08876
 BUS: (732) 354-1461

ARCHITECT
 GreenbergFarrow
 1430 West Peachtree St. NW, Suite 410
 Atlanta, GA 30309
 Bus: (908) 625-9195
 Dir: (732) 537-0831

PLANNING & ZONING
 Cobb County Community Development
 1150 Powder Springs Street, Suite 400
 Marietta, GA 30064
 Bus: (770) 528-2130
 comdev@cobbcounty.org

TELEPHONE
 Comcast Business
 Leigh Wong
 Bus: (610) 624-1575

WATER
 Cobb County Water System
 Christopher Duggan
 660 S Cobb Drive
 Marietta, GA 30060
 Bus: (770) 419-6380
 christopher.duggan@cobbcounty.org

STORMWATER
 Stormwater Services, P.E.
 Stormwater Plan Review
 660 S Cobb Drive
 Marietta, GA 30060
 Bus: (770) 419-6452
 carl.carver@cobbcounty.org

ELECTRIC
 Cobb EMC
 1595 County Services Pkwy
 Marietta, GA 30008
 Bus: (770) 429-2100

SANITARY
 Cobb County Water System
 Christopher Duggan
 660 S Cobb Drive
 Marietta, GA 30060
 Bus: (770) 419-6380
 christopher.duggan@cobbcounty.org

ATLANTA GAS LIGHT
 Donald
 Service Representative
 2838 Joe Jerkins Blvd
 https://www.atlantagaslight.com
 Bus: (770) 994-1946

FIRE
 Cobb County Fire Marshal Office
 Fire Marshal/Division Chief
 1595 County Services Pkwy
 Marietta, GA 30008
 Bus: (770) 528-8000
 FMOinspections@cobbcounty.org

THE OWNER HEREBY DESIGNATES (PRINT) JOHN CULLEY AS THE PROJECT SUPERVISOR. ANY UNAUTHORIZED PERSON SHALL BE RESPONSIBLE FOR DAMAGE TO THE PROPERTY AND NEPA 241-69. FAILURE TO COMPLY CAN RESULT IN STOP WORK ORDERS AND/OR CITATION.

A LANDSCAPE CONFERENCE IS REQUIRED FOR THIS PROJECT PRIOR TO ANY FINISH LANDSCAPING. CALL THE COBB COUNTY ARBORIST AT (770) 528-2124 OR THE LANDSCAPE ARCHITECT AT (770) 528-2149. THERE ARE CRITICAL FACTORS ON THE LANDSCAPE PLAN THAT AFFECT BOTH THE GENERAL CONTRACTOR AND THE LANDSCAPE CONTRACTOR. PLANTING AREA DIMENSIONS, PLANTING METHODS AND AS WELL AS PLANT MATERIALS MUST BE IN ACCORDANCE WITH THE APPROVED PLAN, OR THE LANDSCAPE INSPECTOR MAY DELAY THE RELEASE OF THE CERTIFICATE OF OCCUPANCY.

THIS SITE PLAN REVIEW IS LIMITED IN SCOPE TO SITE PREPARATION FOR CONSTRUCTION. THE EGRESS COMPONENTS HAVE NOT BEEN REVIEWED. ALL BUILDINGS, STRUCTURES, EGRESS COMPONENTS, INCLUDING RAMPS AND STAIRS MUST BE SUBMITTED SEPARATELY TO THE FIRE MARSHAL'S OFFICE FOR REVIEW AND APPROVAL PRIOR TO CONSTRUCTION. INDEPENDENT BUILDING PERMITS ARE REQUIRED IN ADDITION TO THE LAND DISTURBANCE PERMIT. THE PERSONS IDENTIFIED BELOW IS DESIGNATED AT THE DESIGN PROFESSIONAL RESPONSIBLE FOR ALL MEANS OF EGRESS COMPONENTS OUTSIDE OF THE BUILDING.

NAME: JOHN WITTLIN PHONE: 678.800.1835

TOTAL SITE AREA = 0.95 ACRES
 TOTAL DISTURBED AREA = 0.94 ACRES

24 HR EMERGENCY CONTACT:
 GARLAND WATKINS— 804-840-1992

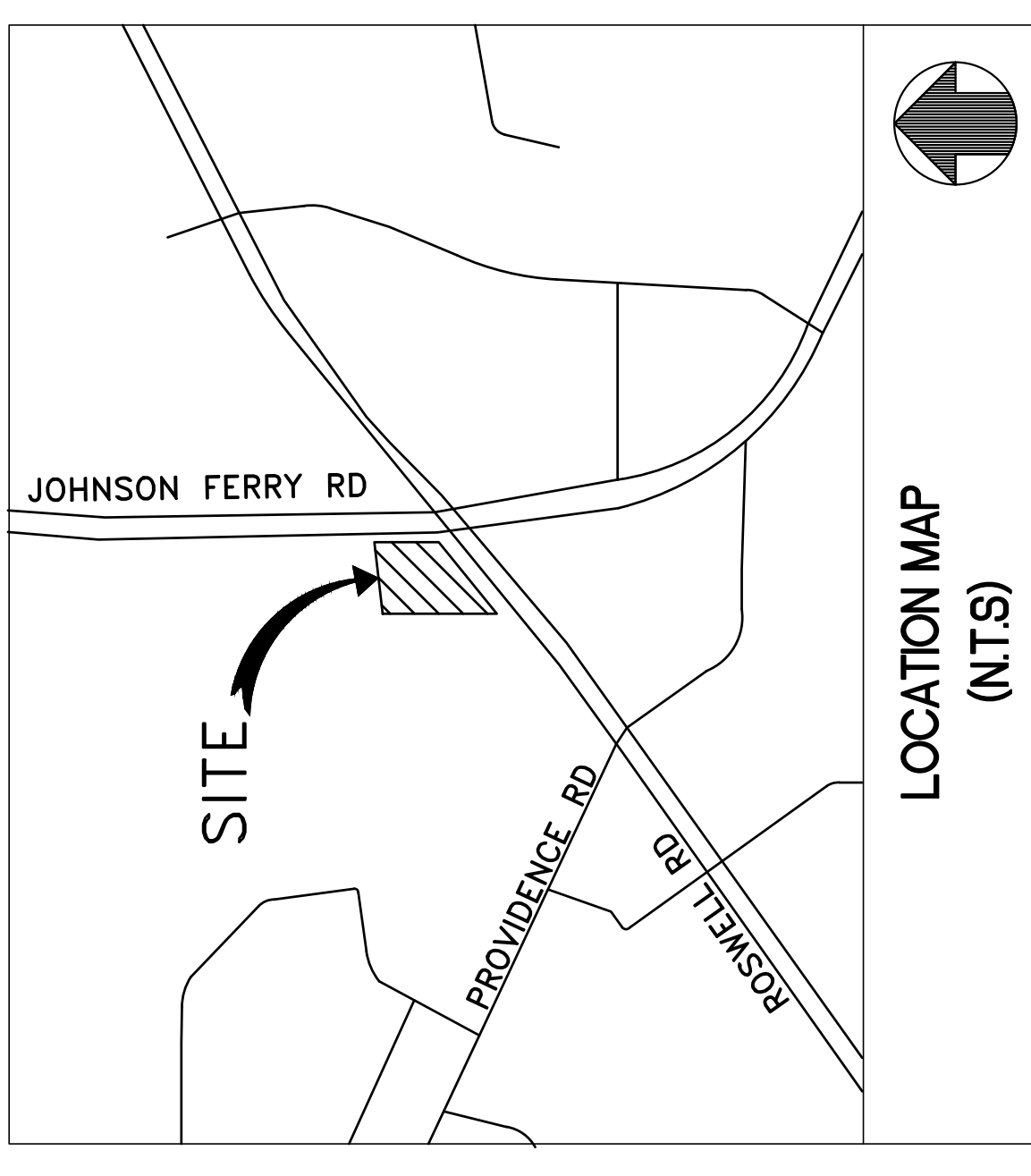
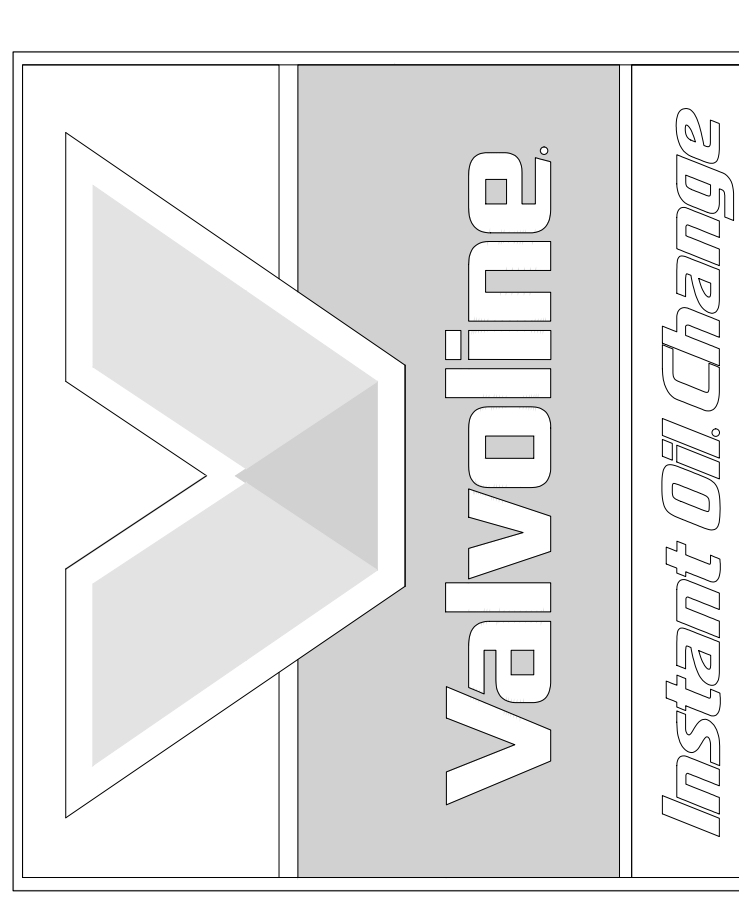
ENGINEER:
GreenbergFarrow
 CONTACT: RYAN SCOTT, PE
 1430 WEST PEACHTREE ST. NW, SUITE 200
 ATLANTA, GA 30309
 (913) 522-7999

OWNER/DEVELOPER:
 CONTACT: GARLAND WATKINS
 100 VALVOLINE WAY
 LEXINGTON, KY 40509
 804-840-1992

SURVEYOR
 ALTA/ACSM LAND TITLE SURVEY
 U.S. SURVEYOR
 4929 RIVERWIND POINTE DR
 EVANSVILLE, INDIANA 47715
 1-800-867-8783 EXT. 201
 SURVEYOR'S PROJECT NO. SS54671

GEOTECHNICAL ENGINEER:
 GILES ENGINEERING ASSOCIATES, INC.
 NS W22350 JOHNSON DRIVE, SUITE A1
 WAUKESHA, WI 53186
 262-544-0118
 PROJECT NO. 1G-2102007

4249 ROSWELL RD
MARIETTA, GA 30062
ZONNING: GC (GENERAL COMMERCIAL)



SITE DEVELOPMENT PLAN



COPYRIGHT NOTICE
 No part of this drawing may be reproduced or transmitted in any form or by any means electronic, mechanical, photocopying, recording, or by any information storage and retrieval system, without the prior written permission from the Professional Engineer of Record.

DATE	ISSUED RECORD
12/07/21	OWNERS REVIEW SET
2/01/22	1ST SUBMITTAL
2/10/22	2ND SUBMITTAL
2/10/22	3RD SUBMITTAL

VALVOLINE INSTANT OIL CHANGE
 4249 ROSWELL RD
 MARIETTA, GA 30062



PROJECT NUMBER: 20200946.0
 PROFESSIONAL IN CHARGE: JON WITTLIN, PE.
 PROJECT MANAGER: RYAN SCOTT
 QUALITY CONTROL: RYAN SCOTT
 DRAWN BY: NICOLE NOVACK
 Drawing Title: COVER SHEET

SPR-2021-00615
 Drawing No. C-0.0

EXISTING LEGEND:

- MONUMENT FOUND
- POWERPOLE
- OUT WIRE
- LIGHT POLE
- STREET LIGHT POLE
- ELEC. TRANSFORMER
- BURIED ELECTRIC
- OVERHEAD TELEPHONE
- OVERHEAD CABLE
- R.R. SPIKE SET
- BENCHMARK
- CONC. R/W MARKER
- RECORD DATA
- MEASURED DATA
- CALCULATED DATA
- R/W RIGHT OF WAY
- COP CORRUGATED CONC PIPE
- CORRUGATED METAL PIPE
- PVC PLASTIC PIPE
- METAL
- AG. ABOVE GROUND LEVEL
- S.C. SQUARE FOOT
- S.C. SQUARE YARD
- FUEL TANK LID
- FLAG POLE
- UNKNOWN MANHOLE
- FROZEN MANHOLE
- UNKNOWN WALK
- MAIL BOX
- BOLLARD
- BORE HOLE
- MONITORING WELL
- PROPOSED CURB
- PROPOSED PARKING SPACES
- PROPOSED SITE LIGHT, SEE PHOTO METRIC PLAN
- TREE PROTECTION FENCING

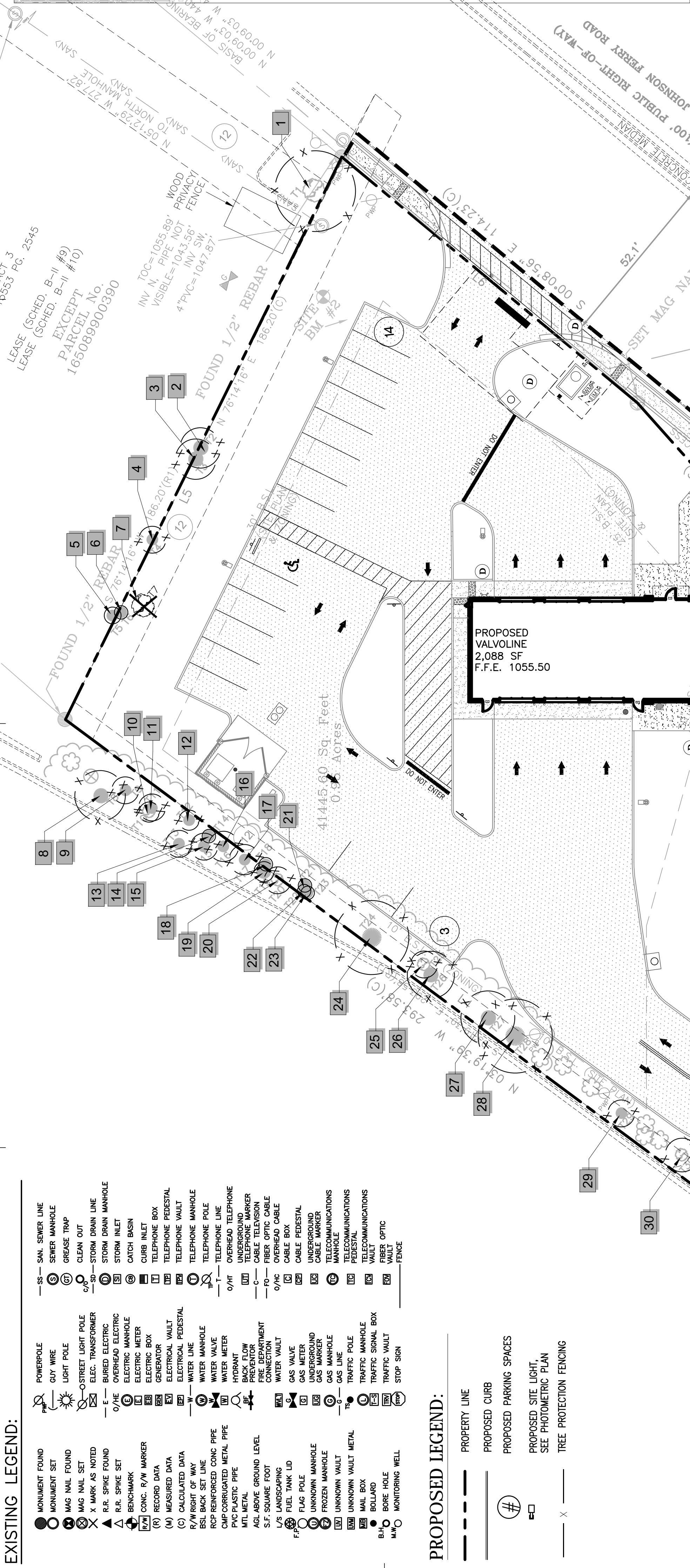
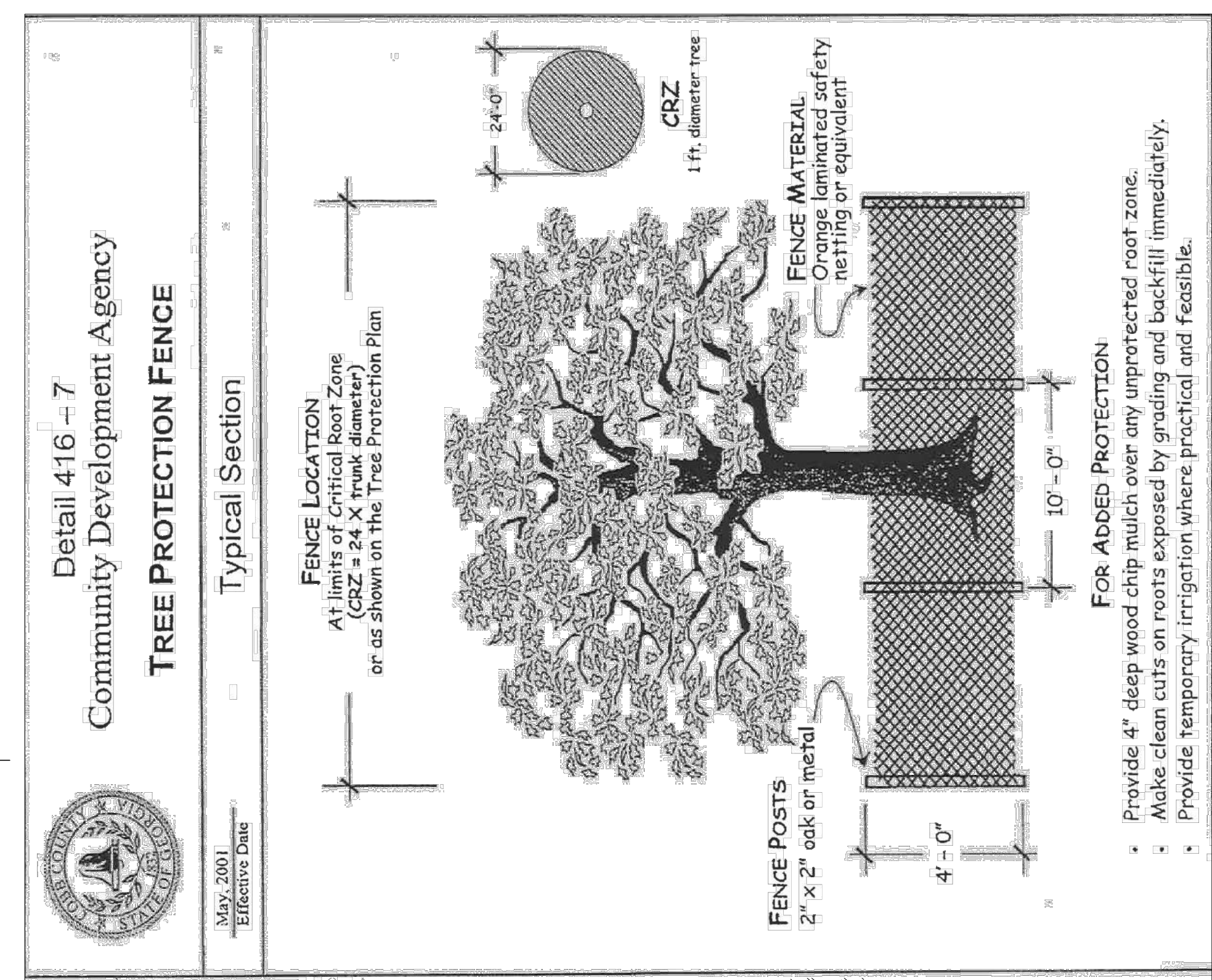
PROPOSED LEGEND:

- PROPERTY LINE
- PROPOSED CURB
- PROPOSED PARKING SPACES
- PROPOSED SITE LIGHT, SEE PHOTO METRIC PLAN
- TREE PROTECTION FENCING

GF
www.greenbergglaw.com
1230 West Peachtree Street, NE
Atlanta, GA 30309
404.861.4000

COMMITMENT NOTICE
This drawing is the property of the author and is not to be used for any purpose other than the specific project for which it was prepared. It is to be reproduced in any manner without the express written permission from the Professional Engineer.

12.07.21	12.07.21	12.07.21	12.07.21
12.17.21	12.17.21	12.17.21	12.17.21
12.17.21	12.17.21	12.17.21	12.17.21
2.10.22	2.10.22	2.10.22	2.10.22
3RD SUBMITTAL	3RD SUBMITTAL	3RD SUBMITTAL	3RD SUBMITTAL



Valvoline
4249 ROSWELL RD
MARIETTA, GA 30062



PROJECT NUMBER: 20200946.0
PROFESSIONAL IN CHARGE: ALEX MADDOX
PROJECT MANAGER: RYAN SCOTT
QUALITY CONTROL: RYAN SCOTT
DRAWN BY: NICOLE NOVACK
Drawing Title:

TREE PRESERVATION PLAN
SPR-2021-00615
Drawing No. **L-10**

TREE SURVEY TABLE

PLANT #	SPECIES	COMMON NAME	CALIPER (IN)	CONDITION	UNIT VALUE	REMOVE/PRESERVE	SPECIES UNIT VALUE (SPECIMEN)	COMMENTS
1	Acer rubrum	Southern Red Maple	24	Good	2.8	PRESERVE		OFF-SITE TREE
2	Pinus strobus	Eastern White Pine	12	Good	0.6	PRESERVE		ON-SITE TREE
3	Pinus strobus	Eastern White Pine	12	Good	0.6	PRESERVE		ON-SITE TREE
4	Pinus strobus	Eastern White Pine	8	Good	0.3	PRESERVE		ON-SITE TREE
5	Pinus strobus	Eastern White Pine	5	Good	0.3	PRESERVE		ON-SITE TREE
6	Pinus strobus	Eastern White Pine	2	Good	0.4	PRESERVE		ON-SITE TREE
7	Quercus Alba	White Oak	35	Poor	6.5	REMOVE		*REPORT PROVIDED NON SPECIMEN TREE
8	Pinus strobus	Eastern White Pine	15	Good	1.9	PRESERVE		OFF-SITE TREE
9	Pinus strobus	Eastern White Pine	4	Good	0.1	PRESERVE		OFF-SITE TREE
10	Pinus strobus	Eastern White Pine	6	Good	0.3	PRESERVE		OFF-SITE TREE
11	Pinus strobus	Eastern White Pine	8	Good	0.3	PRESERVE		OFF-SITE TREE
12	Pinus strobus	Eastern White Pine	6	Good	0.3	PRESERVE		OFF-SITE TREE
13	Pinus strobus	Eastern White Pine	8	Good	0.3	PRESERVE		OFF-SITE TREE
14	Pinus strobus	Eastern White Pine	4	Good	0.1	PRESERVE		OFF-SITE TREE
15	Pinus strobus	Eastern White Pine	8	Good	0.3	PRESERVE		OFF-SITE TREE
16	Pinus strobus	Eastern White Pine	9	Good	0.6	PRESERVE		OFF-SITE TREE
17	Pinus strobus	Eastern White Pine	9	Good	0.6	PRESERVE		OFF-SITE TREE
18	Pinus strobus	Eastern White Pine	4	Good	0.1	PRESERVE		ON-SITE TREE
19	Pinus strobus	Eastern White Pine	12	Good	0.6	PRESERVE		OFF-SITE TREE
20	Pinus strobus	Eastern White Pine	8	Good	0.3	PRESERVE		OFF-SITE TREE
21	Pinus strobus	Eastern White Pine	4	Good	0.1	PRESERVE		ON-SITE TREE
22	Pinus strobus	Eastern White Pine	4	Good	1.2	PRESERVE		ON-SITE TREE
23	Pinus strobus	Eastern White Pine	4	Good	0.1	PRESERVE		ON-SITE TREE
24	Pinus strobus	Eastern White Pine	22	Good	2.8	PRESERVE		IMPACTED TREE, NO CREDIT
25	Pinus strobus	Eastern White Pine	8	Good	0.3	PRESERVE		ON-SITE TREE
26	Acer rubrum	Red Maple	14	Good	1.2	PRESERVE		ON-SITE TREE
27	Pinus strobus	Eastern White Pine	16	Good	1.2	PRESERVE		ON-SITE TREE
28	Pinus strobus	Eastern White Pine	22	Good	2.8	PRESERVE		IMPACTED TREE, NO CREDIT
29	Juniperus virginiana	Eastern Red Cedar	8	Good	0.3	PRESERVE		ON-SITE TREE
30	Acer rubrum	Red Maple	10	Good	0.6	PRESERVE		ON-SITE TREE
CM1	Acer rubrum	Crape Myrtle	8	Good	0.3	REMOVE		IMPACTED, ON-SITE TREE
CM2	Acer rubrum	Crape Myrtle	10	Good	0.6	REMOVE		IMPACTED, ON-SITE TREE

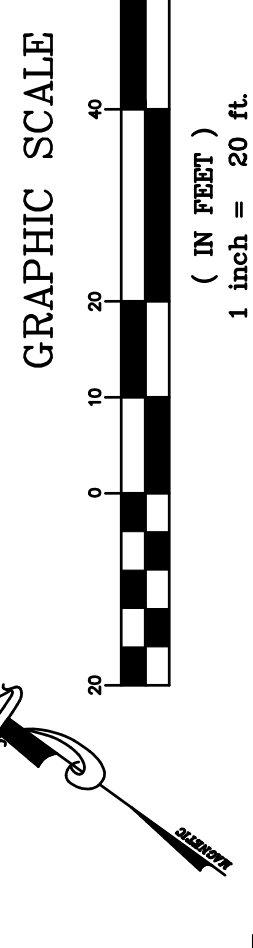
LANDSCAPE EXISTING/PRESERVE UNIT CALCULATIONS (ONSITE TREES):

PLANT #	SPECIES	COMMON NAME	CALIPER (IN)	UNIT VALUE	SPECIES UNIT VALUE (SPECIMEN)
2	Pinus strobus	Eastern White Pine	12	0.6	n/a
3	Pinus strobus	Eastern White Pine	12	0.6	n/a
4	Pinus strobus	Eastern White Pine	8	0.3	n/a
5	Pinus strobus	Eastern White Pine	5	0.3	n/a
6	Pinus strobus	Eastern White Pine	2	0.4	n/a
18	Pinus strobus	Eastern White Pine	4	0.1	n/a
21	Pinus strobus	Eastern White Pine	4	0.1	n/a
22	Pinus strobus	Eastern White Pine	4	1.2	n/a
23	Pinus strobus	Eastern White Pine	4	0.1	n/a
25	Pinus strobus	Eastern White Pine	8	0.3	n/a
26	Acer rubrum	Red Maple	14	1.2	n/a
27	Pinus strobus	Eastern White Pine	16	1.2	n/a
28	Pinus strobus	Eastern Red Cedar	8	0.3	n/a
29	Acer rubrum	Red Maple	10	0.6	n/a
TOTAL EXISTING UNIT VALUE				7.3	

REMOVE OR PRESERVE	INCHES	UNIT
TOTAL REMOVAL ON-SITE (IMPACTED, NO CREDITS)	53	7.4
TOTAL PRESERVED ON-SITE	111	7.3
TOTAL PRESERVED OFF-SITE	44	5.6
TOTAL CALIPER (ON-SITE PRESERVED, CREDITS)	121	8.5
TOTAL CALIPER (OFF-SITE)	121	8.5

SITE DENSITY FACTOR: 15 UNITS
EXISTING DENSITY FACTOR: 7.3 UNITS
REPLACEMENT DENSITY FACTOR: 7.7 UNITS

811
Know what's below.
Call before you dig.



LANDSCAPE NOTES

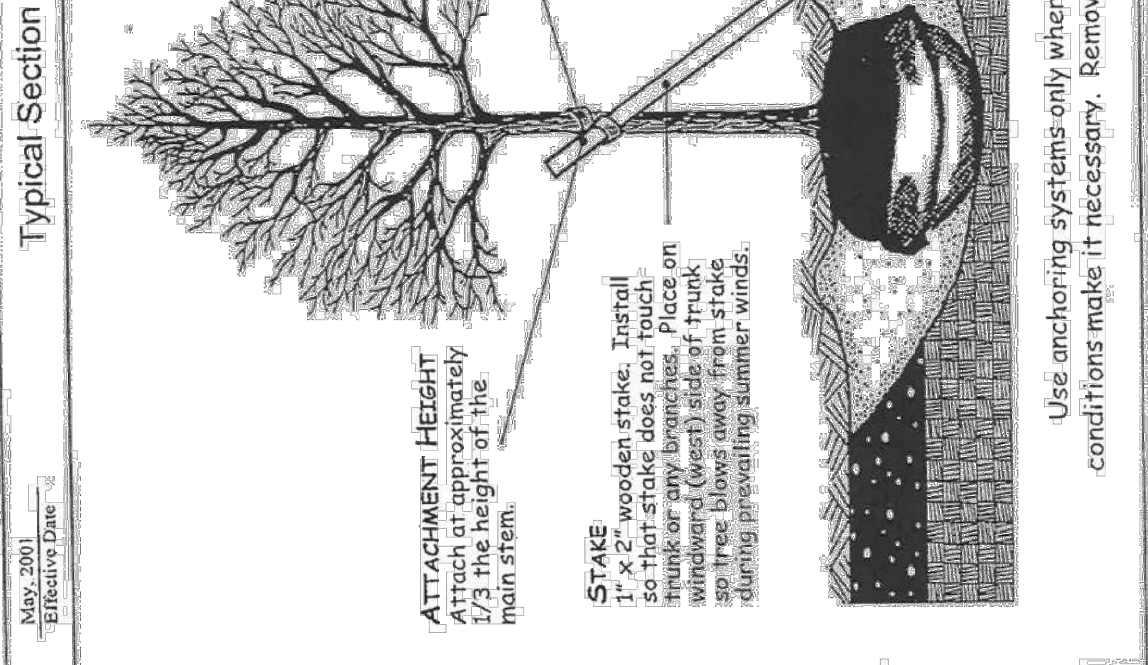
- LANDSCAPE PLANS ARE TO BE PERFORMED BASED ON THESE PLANS.
- QUANTITIES ON THE PLANT SCHEDULE ARE PROVIDED FOR CONVENIENCE. THE CONTRACTOR SHALL BE RESPONSIBLE FOR HIS/HER OWN QUANTITY CALCULATIONS. IN THE EVENT OF A DISCREPANCY BETWEEN THE LANDSCAPE PLANS AND THE PLANT SCHEDULE, THE LANDSCAPE PLAN WILL TAKE PRECEDENCE. THE CONTRACTOR SHALL INQUIRE DISCREPANCIES IMMEDIATELY UPON DISCOVERING ANY QUANTITY DISCREPANCIES.
- THE CONTRACTOR SHALL NOT CHANGE OR SUBSTITUTE PLANT VARIETIES OR SPECIES WITHOUT PRIOR WRITTEN APPROVAL FROM THE LANDSCAPE ARCHITECT.
- CONTRACTOR SHALL TAKE 3 REPRESENTATIVE SOIL SAMPLES OF EACH PROPOSED PLANT BED AND SUBMIT COPIES OF THE RESULTS TO THE LANDSCAPE ARCHITECT PRIOR TO BEGINNING WORK.
- CONTRACTOR SHALL ENSURE POSITIVE DRAINAGE OF ALL PLANTING HOLES AND PLANT BEDS PRIOR TO INSTALLATION.
- STUMPS LABELED FOR REMOVAL SHALL BE EXCAVATED, NOT GROUND. REMOVE ANY DEBRIS FROM THE HOLE. FILL WITH TOP SOIL, COMPACT AND RAKE SMOOTH PRIOR TO INSTALLING NEW PLANT MATERIAL.
- TOPSOIL WILL NOT BE STOCKPILED FOR RE-USE IN LANDSCAPE WORK. CONTRACTOR SHALL IMPORT TOPSOIL AS REQUIRED TO COMPLETE LANDSCAPE WORK.
- PROVIDE NEW TOPSOIL THAT IS FERTILE, FRABLE, NATURAL LOAM, SURFACE SOIL, REASONABLY FREE OF ROOTS, STUMPS AND LARGE STONES AND FREE HARMFUL TO PLANT GROWTH.
- OBTAIN TOPSOIL FROM LOCAL SOURCES OR FROM AREAS HAVING SIMILAR SOIL CHARACTERISTICS TO THAT FOUND AT PROJECT SITE. OBTAIN TOPSOIL ONLY FROM NATURALLY WELL DRAINED SITES WHERE TOPSOIL OCCURS IN A DEPTH OF NOT LESS THAN 4 INCHES. DO NOT OBTAIN FROM BOGS OR MARSHES. PLANT MATERIAL SHALL BE PLACED AS SHOWN ON THE LANDSCAPE PLANS.
- PLANTING SOIL MIX FOR TREES, SHRUBS, AND GROUNDCOVERS SHALL CONSIST OF THE FOLLOWING:
 - 80% TOPSOIL
 - 20% PREPARED ADDITIVES (BY VOLUME AS FOLLOWS):
 - 3 PARTS - ORGANIC SOIL CONDITIONER (NATURE'S HELPER OR EQUAL)
 - 1 PART - STERILIZED COW MANURE (OR EQUAL)
 - COMMERCIALLY AVAILABLE STARTER FERTILIZER @ RATES SPECIFIED BY MANUFACTURER
 - LIME (AS RECOMMENDED IN SOIL ANALYSIS)
- QUALITY OF PLANT MATERIAL: ALL PLANTS SHALL CONFORM TO THE CURRENT VERSION OF THE AMERICAN STANDARD FOR NURSERY STOCK (ANSI Z60.1).
- PLANT MATERIAL SHALL BE FREE OF DISEASE AND/OR INSECTS, AND SHALL HAVE A HEALTHY ROOT SYSTEM WITH NO CIRCLING OR KINKED ROOTS. CONTAINER PLANTS SHALL NOT BE ROOT BOUND. PLANT MATERIAL SHALL CONFORM TO THE CURRENT STANDARDS OF THE AMERICAN STANDARD FOR NURSERY STOCK (ANSI Z60.1-2004).
- TREES SHALL HAVE STRAIGHT TRUNKS, DENSE CANOPIES AND STRONG BRANCHING WITH GOOD CROTCH ANGLES. CONTRACTOR SHALL SUBMIT GRADE PHOTOS OF EACH TREE TO LANDSCAPE ARCHITECT PRIOR TO DELIVERY.
- ALL PLANT MATERIAL SHALL BE SUFFICIENTLY WATERED TO WET THE ENTIRE ROOT BALL WITHIN TWO HOURS OF PLANTING.
- INSPECTION AND APPROVAL OF PLANT MATERIAL: ALL PLANT MATERIAL SHALL BE INSPECTED AND APPROVED BY THE LANDSCAPE ARCHITECT UPON DELIVERY TO THE SITE. PRIOR TO INSTALLATION, CONTRACTOR SHALL GIVE LANDSCAPE ARCHITECT AT LEAST ONE WEEK NOTICE PRIOR TO PLANT DELIVERY.
- NEW SHRUB AND GROUNDCOVER PLANTING SHALL BE A MINIMUM OF 36" AWAY FROM EXISTING TREES.
- CONTRACTOR SHALL REMOVE ALL PLANT TAGS AFTER APPROVAL OF PLANT INSTALLATION BY LANDSCAPE ARCHITECT
- MULCH ALL PLANT BEDS AND TREE RINGS WITH FRESH, CLEAN PINESTRAW TO A MINIMUM DEPTH OF THREE (3) INCHES. DO NOT PILE MULCH AROUND THE BASE OF PLANTS OR TREE TRUNKS. ALL MULCH EDGES SHALL BE NEATLY TUCKED. ALL STRING AND/OR BAILING WIRE SHALL BE REMOVED. DUST SHRUBS AND GROUND COVER AFTER MULCHING TO REMOVE LOOSE PINESTRAW FROM THE PLANTS.
- BED PREPARATION FOR SOD INSTALLATION: REMOVE EXISTING VEGETATION WITHIN THE APPROVED BEDLINE. IF THE EXISTING SOIL IS COMPACTED OR OTHERWISE UNSUITABLE FOR PLANTING, REMOVE THE TOP 4 INCHES OF SOIL. SUBGRADE TO A MINIMUM DEPTH OF 6 INCHES. REMOVE LARGE STONES, STICKS, ROOTS, RUBBISH, AND OTHER EXTRANEOUS MATERIAL. SPREAD 2 INCHES OF TOPSOIL OVER THE PREPARED BED AND TILL INTO THE TOP 4 INCHES OF LOOSENEED SUBGRADE. SPREAD THE REMAINING 2 INCHES OF TOPSOIL, RAKE SMOOTH AND ROLL COMPACT. BEDS SHALL BE FINISHED WITH A SLIGHT CROWN AT THE CENTER TO ALLOW WATER TO SHEET FLOW TO THE SIDES.
- WATER THE BED IMMEDIATELY BEFORE LAYING THE SOD SO THAT THE TOP INCHES OF SOIL WILL ALLOW WATER TO PERCOLATE. THERE IS NO STANDING WATER. LIMIT PREPARATION TO AREAS THAT WILL BE SODDED THAT SAME DAY.
- MAINTENANCE: CONTRACTOR SHALL MAINTAIN ALL PLANT MATERIAL FROM THE TIME IT IS INSTALLED UNTIL FINAL ACCEPTANCE OR WHEN THE OWNER TAKES OVER MAINTENANCE, WHICHEVER OCCURS FIRST. MAINTENANCE SHALL INCLUDE BUT NOT BE LIMITED TO MOWING, EDGING, WEEDING, WATERING, PRUNING, FERTILIZING, ETC.
- WARRANTY: CONTRACTOR SHALL PROVIDE A ONE-YEAR WARRANTY ON ALL PLANT MATERIAL AND LABOR. WARRANTY PERIOD SHALL BEGIN UPON FINAL COMPLETION OR WHEN THE OWNER TAKES OVER MAINTENANCE, WHICHEVER OCCURS FIRST.
- THE CONTRACTOR SHALL MAKE PERIODIC INSPECTIONS OF THE PROJECT DURING THE WARRANTY PERIOD TO ENSURE THAT THE ESTABLISHMENT RATE, GROWTH IS ADEQUATE, AND METHODS AND PRODUCTS BEING USED ARE APPROPRIATE. THE CONTRACTOR SHALL REPORT TO THE LANDSCAPE ARCHITECT IN WRITING ANY INSPECTION AND REPORT WILL BE INTERPRETED AS APPROVAL, AND THE CONTRACTOR SHALL BE RESPONSIBLE FOR ANY AND ALL REPLACEMENTS.
- ALL DISTURBED AREAS NOT OTHERWISE SPECIFIED SHALL BE SODDED WITH BERMUDA SOD PER THE LANDSCAPE PLAN.

COBB COUNTY LANDSCAPE NOTES

- PARKING LOT ISLANDS AND MEDIANS MUST BE COVERED WITH FOUR (4) INCHES OF ORGANIC MULCH MATERIAL (REPLACED PERIODICALLY). TO DISCOURAGE SOIL COMPACTION FROM PEDESTRIAN TRAFFIC, THESE AREAS MAY BE PLANTED WITH LOW EVERGREEN SHRUBS, BUT NOT WITH GRASS.
- PARKING LOT ISLANDS, PENINSULAS AND MEDIANS MUST HAVE A MINIMUM WIDTH OF EIGHT (8) FEET FROM BACK OF CURB. PENINSULAS MUST HAVE A MINIMUM DEPTH OF 18.5 FEET FROM BACK OF CURB.
- POSITION THE PARKING LOT TREES APPROXIMATELY FOUR FEET FROM ALL ADJACENT CURB LINES TO ACHIEVE MAXIMUM SHADING EFFECT.
- PROVIDE 20' MINIMUM SPACING BETWEEN THE TRUNKS OF ALL DECIDUOUS SHADE TREES.
- PROVIDE 20' MINIMUM SPACING BETWEEN THE TRUNKS OF ALL DECIDUOUS SHADE TREES AND ANY EXISTING OR PROPOSED LIGHT POLES. PROVIDE GREATER SPACING WHERE POSSIBLE.
- PROVIDE 15' MINIMUM SPACING BETWEEN THE TRUNKS OF ALL DECIDUOUS SHADE TREES AND ANY EXISTING OR PROPOSED BUILDINGS. PROVIDE GREATER SPACING WHERE POSSIBLE.
- INSTALLED TREES MUST BE ALLOWED TO GROW TO THEIR NATURAL SIZE AND SHAPE AND NOT BE PRUNED IN CONFLICT WITH ANSI A300 STANDARDS (NO TOPPING, LIMBING UP, LIMB TAILING, ETC.).
- DO NOT INSTALL OVER-STORY TREES IN LOCATIONS WHERE FUTURE CONFLICTS WITH EXISTING OVERHEAD UTILITY LINES WILL BE INEVITABLE. CONTACT THE COBB COUNTY ARBORIST OR LANDSCAPE ARCHITECT IF ANY POTENTIAL CONFLICTS ARE IDENTIFIED DURING THE INSTALLATION PROCESS.
- BUFFERS MUST BE PLANTED TO COBB COUNTY STANDARDS WHERE SPARSELY VEGETATED OR WHERE DISTURBED FOR APPROVED UTILITY OR ACCESS CROSSINGS.
- THE DENSITY REQUIREMENTS SHOWN ON THE TREE REPLACEMENT AND/OR REPLACEMENT PLANS) MUST BE FULFILLED PRIOR TO THE ISSUANCE OF THE CERTIFICATE OF OCCUPANCY OR ACCEPTANCE OF THE FINAL CALL. CALL THE DEVELOPMENT INSPECTIONS DIVISION AT (770) 528-2147 FOR AN INSPECTION. A PERFORMANCE BOND LETTER-OF-CREDIT OR ESCROW ACCOUNT WILL BE ACCEPTED IF PLANT MATERIALS MUST BE INSTALLED AT A LATER DATE.
- FISCAL SURETY FOR MAINTENANCE OF PLANTED TREES MUST BE IN PLACE PRIOR TO THE ISSUANCE OF THE CERTIFICATE OF OCCUPANCY. A MAINTENANCE INSPECTION WILL BE PERFORMED PRIOR TO THE SCHEDULED RELEASE DATE OF THE POSTED FISCAL SURETY TO DETERMINE THE HEALTH OF THE TREES PLANTED TO MEET THE REQUIREMENTS OF THIS ORDINANCE AS WELL AS ANY BUFFER PLANTINGS.
- WHEN DIGGING NEAR TREES, THE CONTRACTOR SHALL PRUNE ALL EXPOSED ROOTS ONE (1) INCH IN DIAMETER AND LARGER ON THE SIDE OF THE TRENCH ADJACENT TO THE TREES. PRUNING SHALL CONSIST OF MAKING A CLEAN CUT FLUSH WITH THE SIDE OF THE TRENCH TO PROMOTE NEW ROOT GROWTH.
- PRUNING OF TREE LIMBS TO PROVIDE CLEARANCE FOR EQUIPMENT AND MATERIALS SHALL BE DONE ACCORDING TO STANDARD ARBORICULTURAL PRACTICE (SEE ANSI A300-1995).
- PROTECT THE TRUNKS OF ANY TREES BEING PRESERVED WITHIN THE TEMPORARY OR PERMANENT UTILITY EASEMENTS WITH STRAPPED-ON PLANKING OR SIMILAR PROTECTIVE DEVICE.
- TREE PROTECTION DEVICES MUST BE INSTALLED AND INSPECTED PRIOR TO ANY CLEARING, GRUBBING OR GRADING. FOR PROJECTS OVER TWO (2) ACRES, A PROFESSIONAL DESIGNER MUST VERIFY THAT THE TREE PROTECTION FENCES WERE INSTALLED AS SHOWN ON THE APPROVED PLANS OR IN LOCATIONS THAT PROVIDED BETTER TREE PRESERVATION POTENTIAL. SUBMIT THIS VERIFICATION PRIOR TO APPROVAL OF THE FINAL PLAT FOR RESIDENTIAL SUBDIVISIONS OR PRIOR TO THE ISSUANCE OF THE BUILDING PERMIT FOR COMMERCIAL PROJECTS.
- A PRE-CONSTRUCTION CONFERENCE IS REQUIRED PRIOR TO THE ISSUANCE OF THE ON-SITE CONSTRUCTION PERMIT AT THE SITE. THE SITE INSPECTIONS SECTION AT (770) 528-2142 TO TREE PROTECTION AND REPLACEMENT SHALL BE ENFORCED ACCORDING TO COBB COUNTY STANDARDS. ANY FIELD ADJUSTMENTS TO TREE PROTECTION DEVICES OR LOCATIONS OR SUBSTITUTIONS OF PLANT MATERIALS SHOWN ON THE APPROVED PLANS ARE SUBJECT TO THE REVIEW AND APPROVAL OF THE COBB COUNTY ARBORIST.
- THE SITE CONTRACTOR SHALL COORDINATE SERVICE ROUTING OF ALL GAS, TELEPHONE, AND ELECTRICAL LINES WITH THE APPROPRIATE UTILITY COMPANY. ALL CONSTRUCTION MUST COMPLY WITH EACH UTILITY'S STANDARDS AND SPECIFICATIONS AND NOT INTERFERE WITH TREE PLANTING SITES OR EXISTING TREES TO BE PRESERVED.

Detail 416-2 TREE ANCHORING - TYPE A

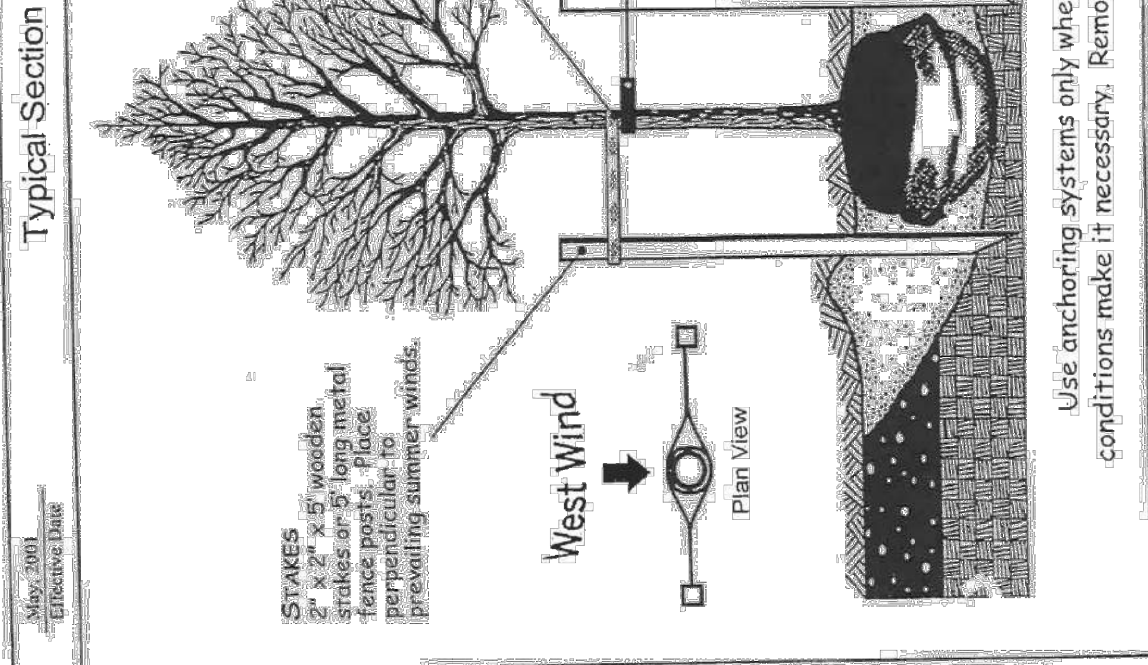
For trees up to 2 inches caliper



Use anchoring systems only where wind or soil conditions make it necessary. Remove after one year.

Detail 416-3 TREE ANCHORING - TYPE B

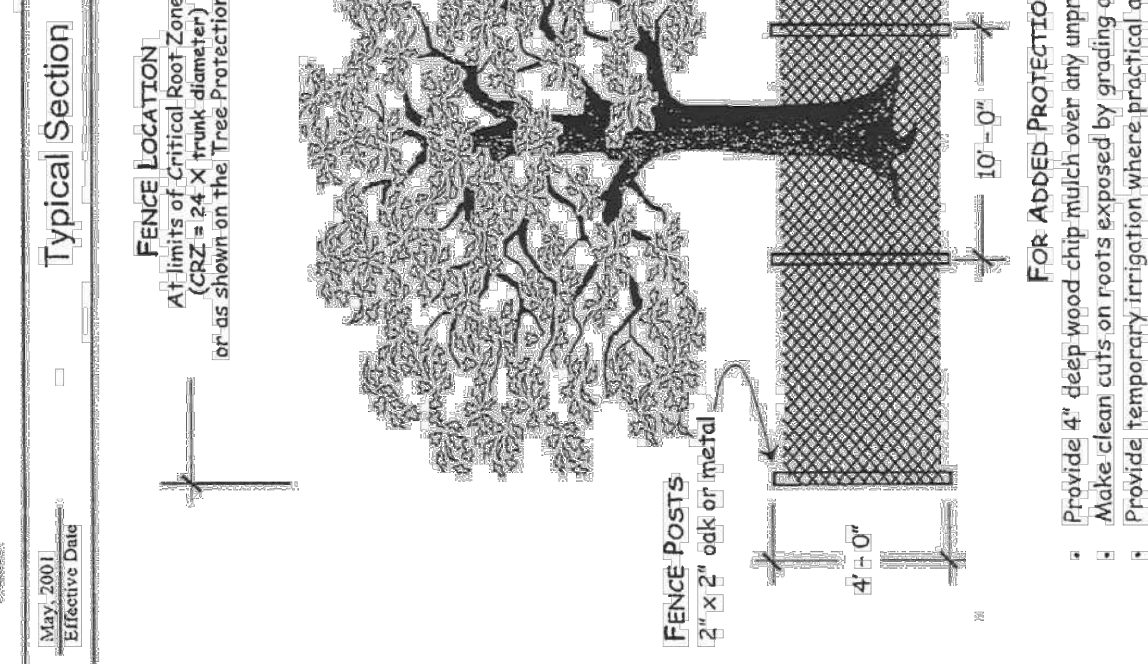
For trees up to 2 inches caliper



Use anchoring systems only where wind or soil conditions make it necessary. Remove after one year.

Detail 416-7 TREE PROTECTION FENCE

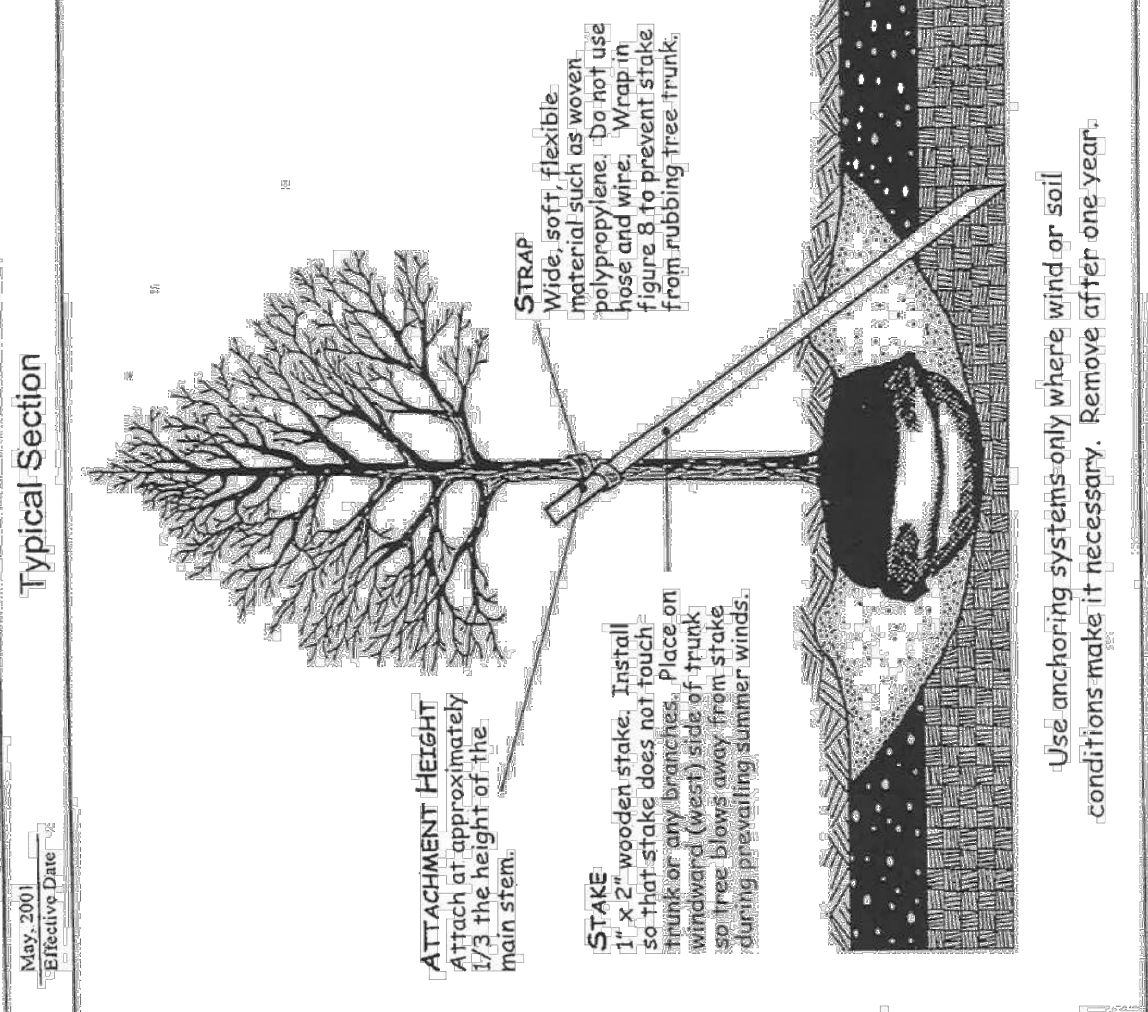
Community Development Agency



Provide 4\"/>

Detail 416-4 TREE ANCHORING - TYPE C

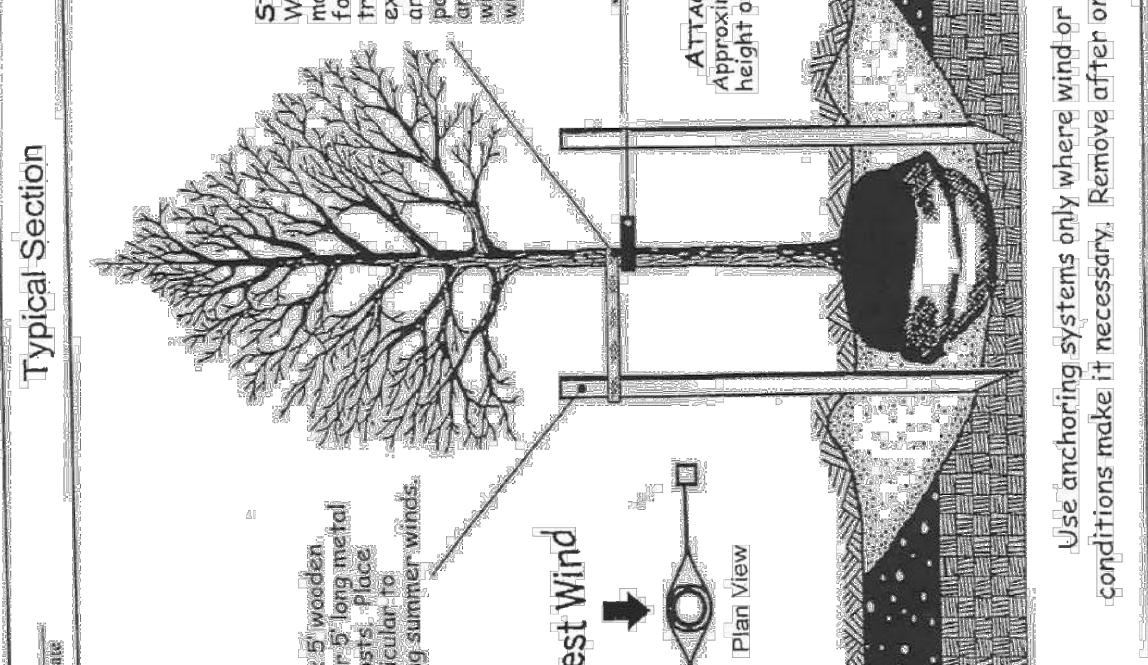
For trees larger than 2 inches caliper



Use anchoring systems only where wind or soil conditions make it necessary. Remove after one year.

Detail 416-5 TREE ANCHORING - TYPE D

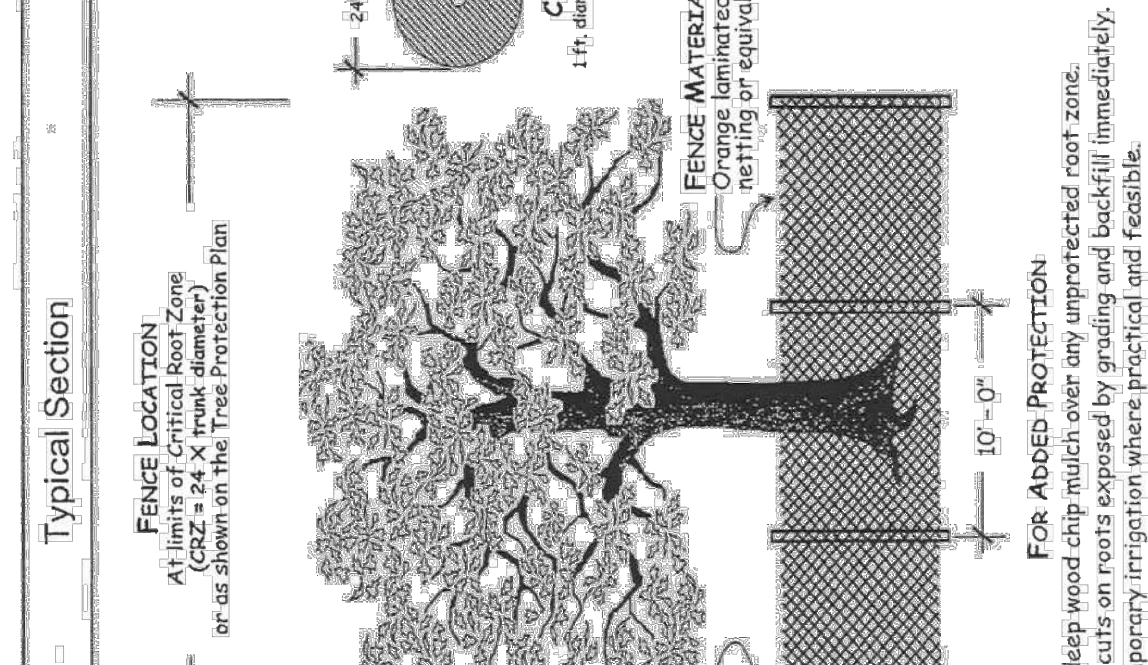
For container grown trees or Ball trees up to 2 inches caliper



Use anchoring systems only where wind or soil conditions make it necessary. Remove after one year.

Detail 416-6 TREE PLANTING IN PARKING LOTS

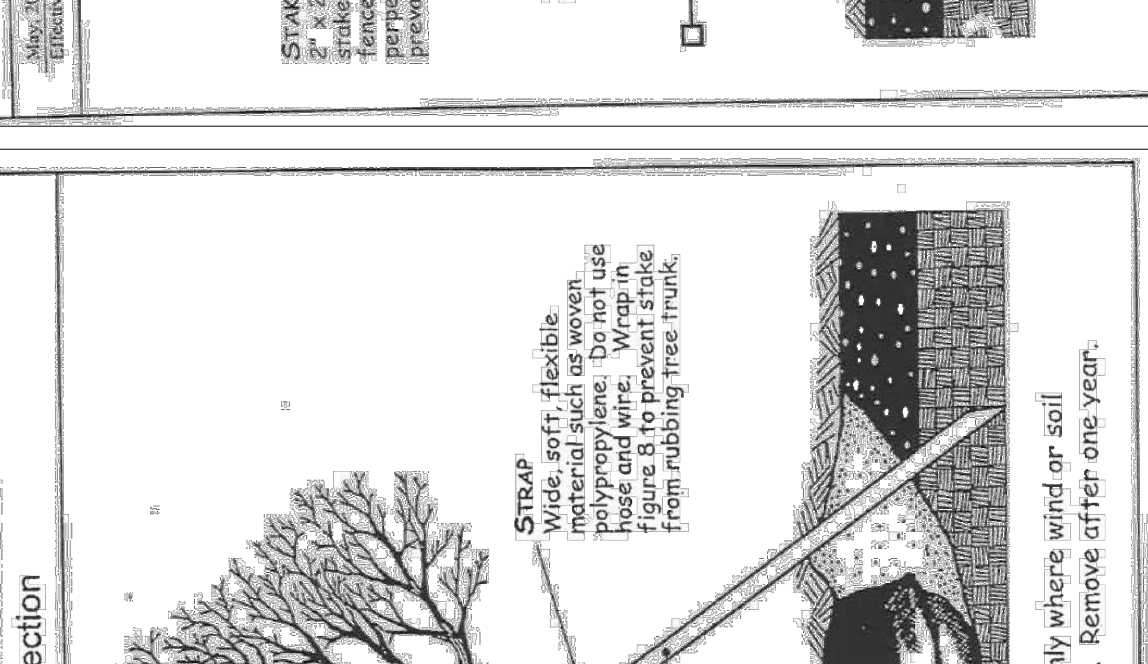
Community Development Agency



Provide 4\"/>

Detail 416-8 SOD EDGE DETAIL

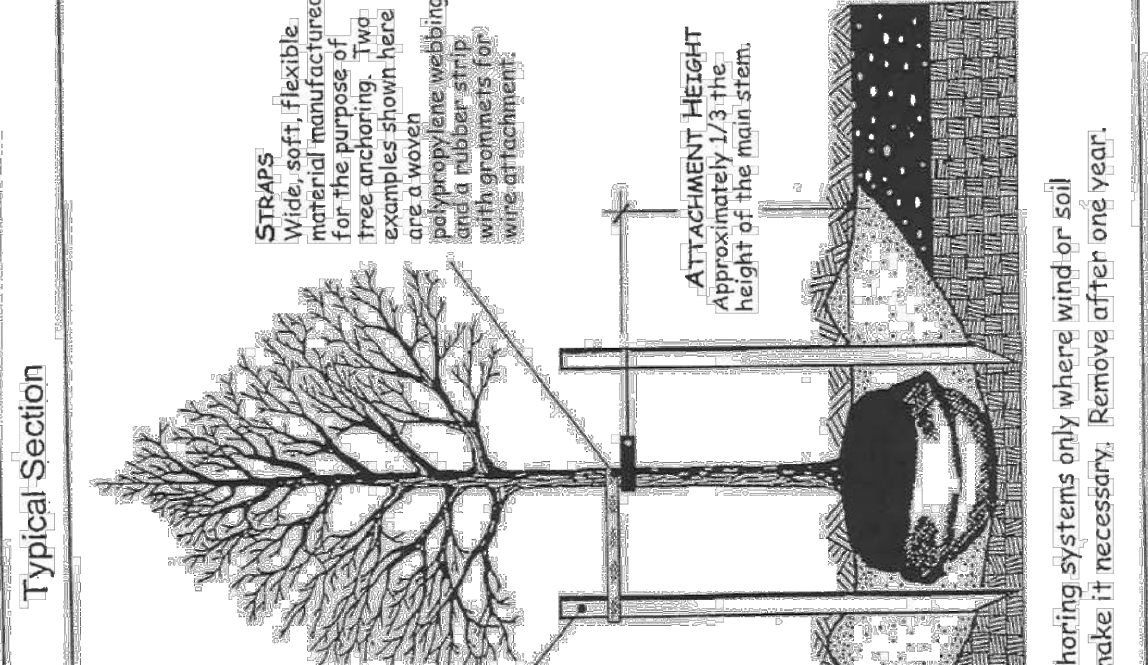
SCALE: NTS



SCALE: NTS

Detail 416-9 ROOT BARRIER

SCALE: NTS



SCALE: NTS

LANDSCAPE DETAILS

SPR-2021-00615
Drawing No.

PROJECT NUMBER	20200946.0
PROFESSIONAL IN CHARGE	ALEX MADDOX
PROJECT MANAGER	RYAN SCOTT
QUALITY CONTROL	RYAN SCOTT
DRAWN BY	NICOLE NOVACK
DATE	02/14/22



VALVOLINE INSTANT OIL CHANGE
4249 ROSWELL RD
MARIETTA, GA 30062

DATE	12/07/21	OWNERS REVIEW SET
	2/07/22	2ND SUBMITTAL
	2/10/22	3RD SUBMITTAL
		ISSUED RECORD

www.greenbergrow.com
1230 West Peachtree Street, NE
Atlanta, GA 30309
404.801.4000

CONVEYANCE NOTICE
The undersigned hereby certifies that the above referenced Professional seal is not to be used for any purpose other than the specific project and site identified herein. If the seal is reproduced in any manner without the express written permission from the Professional Engineer, the Professional Engineer shall be held liable for any and all damages resulting therefrom.

REGISTERED PROFESSIONAL ENGINEER
No. 1384
EXPIRES 12/31/2024

6

7

8

9

10

11

12

13

14

15

16

17

18

19

20

21

22

23

24

25

26

27

28

29

30

31

32

33

34

35

36

37

38

39

40

41

42

43

44

45

46

47

48

49

50

51

52

53

54

55

56

57

58

59

60

61

62

63

64

65

66

67

68

69

70

71

72

73

74

75

76

77

78

79

80

81

82

83

84

85

86

87

88

89

90

91

92

93

94

95

96

97

98

99

100

101

102

103

104

105

106

107

108

109

110

111

112

113

114

115

116

117

118

119

120

121

122

123

124

125

126

127

128

129

130

131

132

133

134

135

136

137

138

139

140

141

142

143

144

145

146

147

148

149

150

151

152

153

154

155

156

157

158

159

160

161

162

163

164

165

166

167

168

169

170

171

172

173

174

175

176

177

178

179

180

181

182

183

184

185

186

187

188

189

190


191

192

CONVEYANCE NOTICE
The Professional Seal of this office is for any purpose other than the specific use intended. The Professional Seal is not to be used in any other manner without the express written permission from the Professional Engineer.

Date	Issued Record	OWNERS REVIEW SET	1ST SUBMITTAL	2ND SUBMITTAL	3RD SUBMITTAL
12.07.21					
12.17.21					
2.01.22					
2.10.22					

VALVOLINE INSTANT OIL CHANGE
4249 ROSWELL RD
MARIETTA, GA 30062

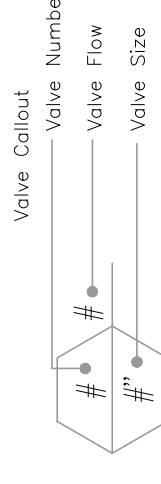



PROJECT NUMBER: 20200946.0
PROFESSIONAL IN CHARGE: ALEX MADDOX
PROJECT MANAGER: RYAN SCOTT
QUALITY CONTROL: RYAN SCOTT
DRAWN BY: NICOLE NOVACK
Drawing Title:

IRRIGATION PLAN
SPR-2021-00615
Drawing No. IR-1.0

IRRIGATION SCHEDULE

SYMBOL	MANUFACTURER/MODEL/DESCRIPTION	QTY	PSI
●	RAIN BIRD 1806 ADJ TURF SPRAY 6.0" POP-UP SPRINKLER WITH CO-MOLDED WIPER SEAL, SIDE AND BOTTOM INLET, 1/2" NPT FEMALE THREADED INLET.	34	30
●	RAIN BIRD 1806 HE-VAN SERIES TURF SPRAY 6.0" POP-UP SPRINKLER WITH CO-MOLDED WIPER SEAL, SIDE AND BOTTOM INLET, 1/2" NPT FEMALE THREADED INLET.	59	30
●	RAIN BIRD 1804-1400 FLOOD 1401 FLOOD BUBBLER 4.0" POPUP	17	40
SYMBOL	MANUFACTURER/MODEL/DESCRIPTION	QTY	
■	RAIN BIRD XCZPGA-100-PRF MEDIUM FLOW, 3-15GPM, WITH 1" PGA VALVE AND 1" PRESSURE REGULATING RBY FILTER AND 40PSI PRESSURE REGULATOR. IT IS 2 WIRE COMPATIBLE RESIDENTIAL CONTROL ZONE KIT.	4	
○	PIPE TRANSITION POINT ABOVE GRADE	7	
○	PIPE TRANSITION POINT FROM PVC LATERAL TO DRIP TUBING WITH RISER TO ABOVE GRADE INSTALLATION.	7	
■	AREA TO RECEIVE DRIPLINE	3,958 L.F.	
■	RAIN BIRD XFCV-06-12 XFCV ON-SURFACE LANDSCAPE DRIPLINE WITH A HEAVY-DUTY 3.5 PSI CHECK VALVE, 0.6 GPH EMITTERS AT 12" O.C. DRIPLINE LATERALS SPACED AT 12" APART, WITH EMITTERS OFFSET FOR TRIANGULAR PATTERN, GREAT FOR ELEVATION CHANGE. SPECIFY XF INSERT FITTINGS.		
SYMBOL	MANUFACTURER/MODEL/DESCRIPTION	QTY	
○	RAIN BIRD PEB 1" 1-1/2" 2" PLASTIC INDUSTRIAL VALVES, LOW FLOW OPERATING CAPABILITY, GLOBE CONFIGURATION.	13	
○	NIBCO T-580-56-R-66-L STAINLESS STEEL BALL VALVE SHUT OFF VALVE	1	
○	RAIN BIRD PEB 1" 1-1/2" 2" PLASTIC INDUSTRIAL VALVES, LOW FLOW OPERATING CAPABILITY, GLOBE CONFIGURATION.	1	
○	WATTS U009 1" REDUCED PRESSURE BACKFLOW PREVENTER	1	
○	RAIN BIRD ESPBLXME W/ (1) ESPLXSM12 20 STATION, TRADITIONALLY-WIRED, COMMERCIAL CONTROLLER, (1) ESPBLXME 8-STATION, INDOOR/OUTDOOR, PLASTIC WALL-MOUNT ENCLOSURE W/ (1) ESPLXSM12 - 12-STATION EXPANSION MODULES.	1	
○	RAIN BIRD WR2-RFS WIRELESS RAIN/FREEZE SENSOR.	1	
○	WATER METER 1"	1	
---	IRRIGATION LATERAL LINE: PVC SCHEDULE 40	2,479 L.F.	
---	IRRIGATION MAINLINE: PVC CLASS 200 SDR 21	746.8 L.F.	
---	PIPE SLEEVE: PVC SCHEDULE 40	264.5 L.F.	



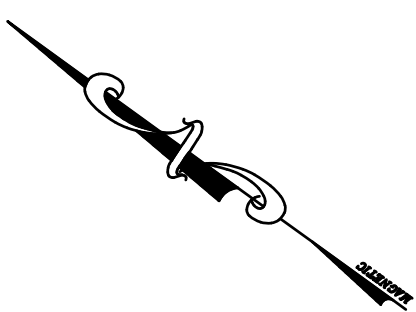
THE INSTALLATION OF THE IRRIGATION SYSTEM OR HOSE BIBS (AS SPECIFIED ON THIS PLAN) WILL BE VERIFIED BY THE COUNTY ARBORIST PRIOR TO THE RELEASE OF THIS PROJECT FOR A CERTIFICATE OF OCCUPANCY.

IRRIGATION ROUTING SHOWN ON THIS PLAN IS FOR DEMONSTRATION PURPOSES ONLY. IRRIGATION CONTRACTOR SHOULD FIELD RUN THE IRRIGATION SYSTEM IN THE MANNER OF AVOIDING ANY CONFLICT WITH PROPOSED/EXISTING DRAINAGE STRUCTURES AND UNDERGROUND UTILITIES.

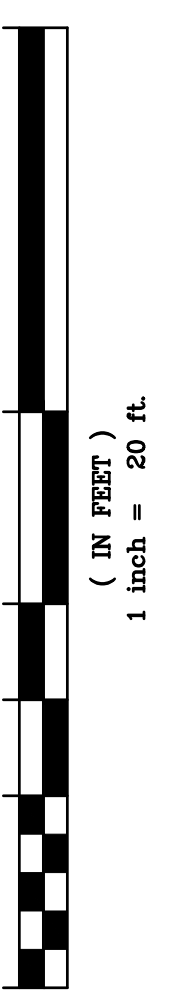
ALL IRRIGATION EQUIPMENT IS TO BE RAINBIRD ONLY, NO SUBSTITUTIONS.

ALL ELECTRONIC LANDSCAPE IRRIGATION SYSTEMS INSTALLED AFTER JANUARY 1, 2005 MUST BE EQUIPPED WITH A RAIN SENSOR SHUT-OFF SWITCH IN ACCORDANCE WITH GEORGIA HB 1277.

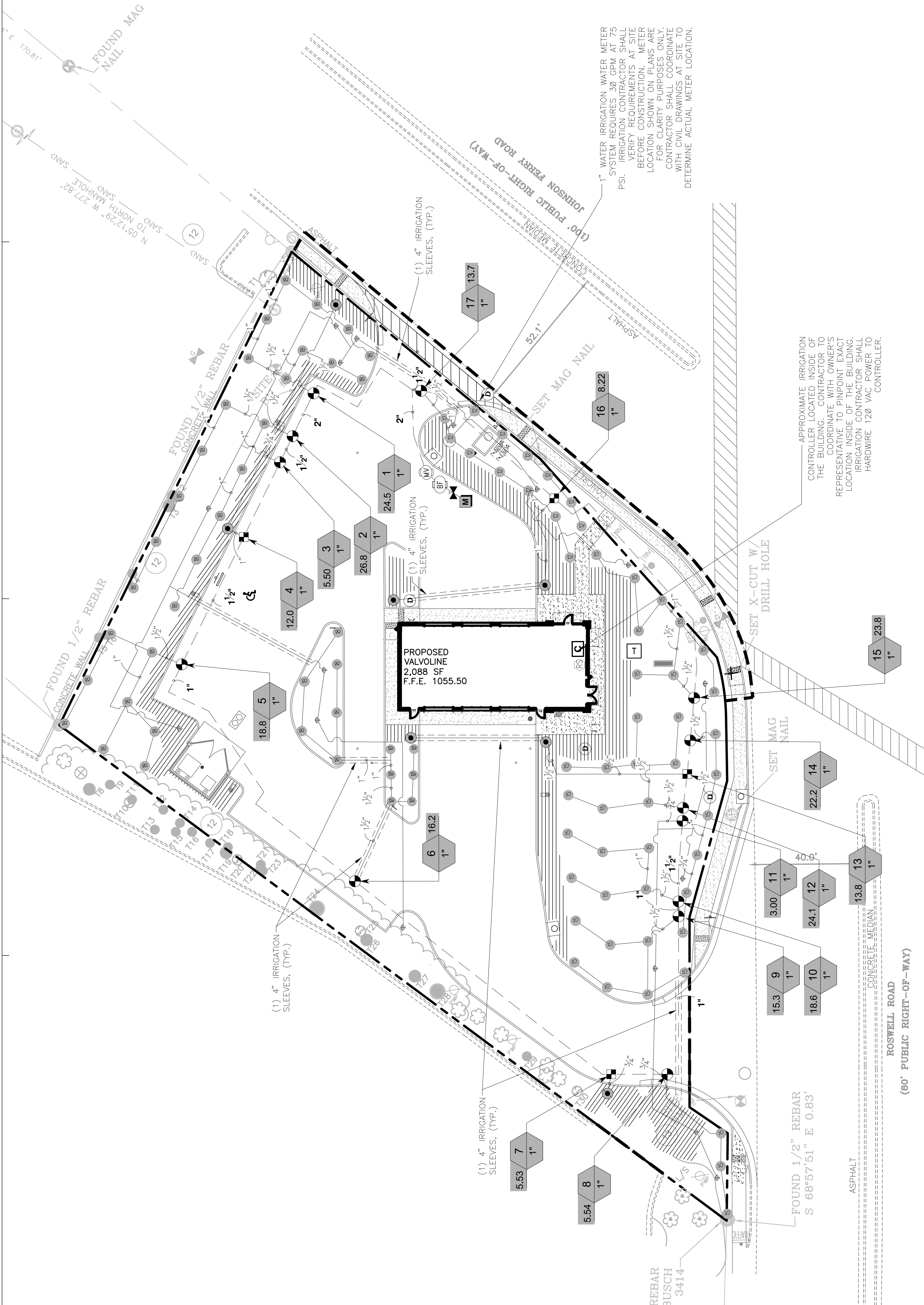
THE IRRIGATION INSTALLER IS RESPONSIBLE FOR PROVIDING AND INSTALLING THE PLUMBING FOR THE IRRIGATION SYSTEM FROM THE EXTERIOR TO THE BACKFLOW PREVENTER LOCATED INSIDE THE BUILDING.



GRAPHIC SCALE



811
Know what's below.
Call before you dig.



GENERAL IRRIGATION NOTES:

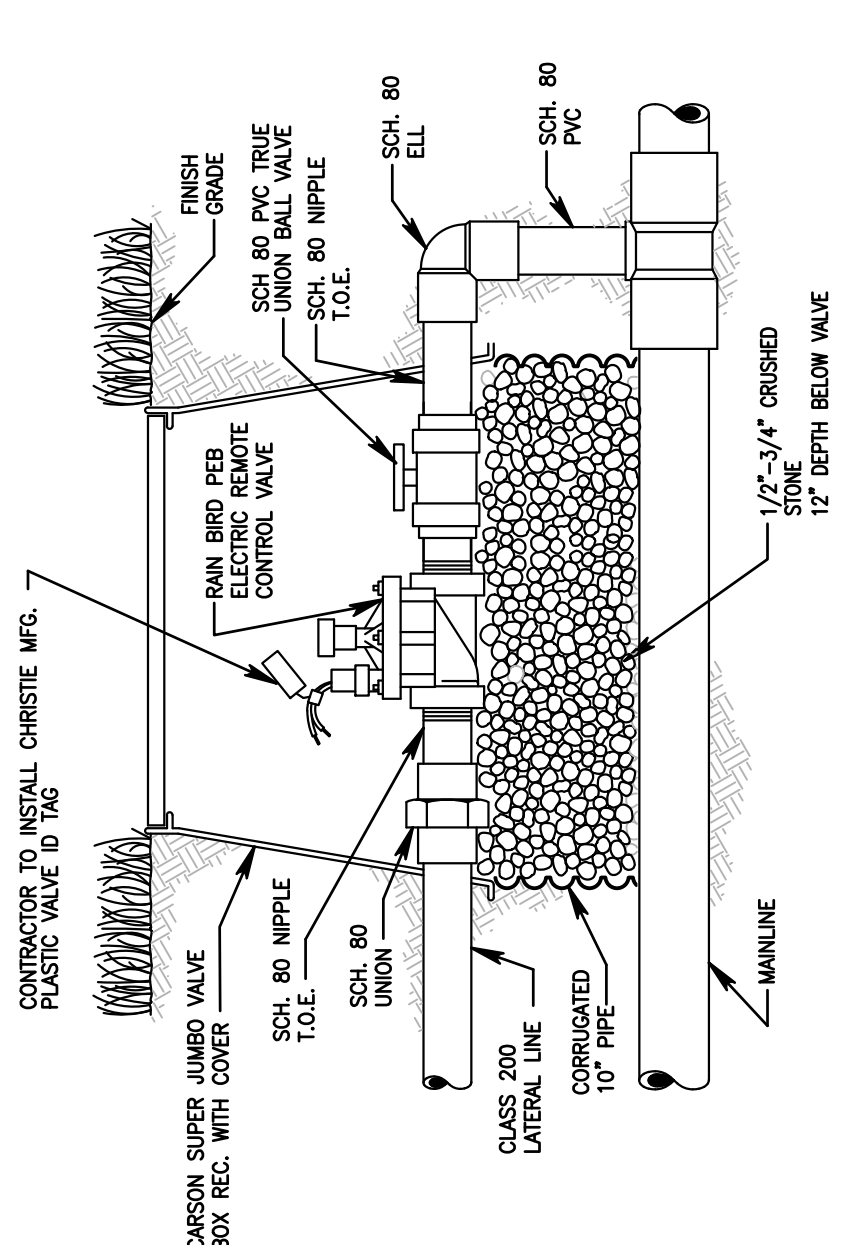
- THE CONTRACTOR SHALL PROVIDE A FULLY FUNCTIONAL IRRIGATION SYSTEM AS SHOWN ON THE PLANS. IRRIGATION HEADS SHALL PROVIDE 100% COVERAGE OF THE AREA TO BE IRRIGATED.
- ALL QUESTIONS CONCERNING THE PLANS, DETAILS OR SPECIFICATIONS SHALL BE DIRECTED TO THE PROJECT LANDSCAPE ARCHITECT; (404) 601 4000.
- THE SOURCE OF WATER FOR THE IRRIGATION SYSTEM SHALL BE: 1" POTABLE WATER METER, SEE CIVIL DRAWINGS.
- THE CONTRACTOR SHALL FIELD VERIFY THE CAPABILITY OF THE WATER SOURCE TO DELIVER A MINIMUM PRESSURE (90 PSI) AND VOLUME (35 GPM) TO OPERATE THE IRRIGATION SYSTEMS AS DESIGNED. IN THE EVENT OF DISCREPANCIES CONTACT THE LANDSCAPE ARCHITECT PRIOR TO INSTALLATION.
- ALL NECESSARY PERMITS (INCLUDING RIGHT OF WAY USE PERMIT) ARE TO BE PROVIDED BY THE INSTALLING CONTRACTOR FOR WORK SHOWN ON THE PLANS.
- ALL COMPONENTS OF THE PROPOSED IRRIGATION SYSTEM SHALL MEET THE FEDERAL, STATE AND LOCAL CODES, REGULATIONS AND ORDINANCES CONCERNING IRRIGATION CONSTRUCTION.
- IN AN EFFORT TO CREATE GRAPHIC CLARITY, IRRIGATION MAINLINE, LATERAL LINE, VALVES AND OTHER COMPONENTS OF THE IRRIGATION SYSTEM MAY BE SHOWN IN PAVED AREAS OR INSIDE BUILDINGS ON THE PLANS. THESE COMPONENTS ARE TO BE INSTALLED IN APPROPRIATE LANDSCAPE AREAS TO CARRY OUT THE INTENT OF THE PLANS.
- THE CONTRACTOR SHALL BE RESPONSIBLE FOR VERIFICATION AND PROTECTION OF ALL UNDERGROUND AND OVERHEAD UTILITIES.
- THE CONTRACTOR SHALL REVIEW THE LANDSCAPE PLANS PRIOR TO INSTALLING THE IRRIGATION SYSTEM. COORDINATE INSTALLATION LOCATIONS OF PIPES, VALVES AND OTHER EQUIPMENT WITH THE INSTALLATION LOCATIONS OF TREES AND SHRUBS.
- AS-BUILT DRAWINGS ARE TO BE PROVIDED BY THE CONTRACTOR. DRAWINGS SHALL BE ON OWNER FURNISHED BASE PLANS IN HARD COPY OR ELECTRONIC VERSIONS. CONTRACTOR SHALL NOTE ALL DEVIATIONS FROM THE IRRIGATION PLANS.
- MAINLINE IS TO BE INSTALLED WITH A MINIMUM OF 18" DEPTH OF COVER, AND LATERAL LINES ARE TO BE INSTALLED WITH A MINIMUM OF 12" DEPTH OF COVER.
- 12" POP-UP SPRAY (OR ROTOR) HEADS SHALL BE INSTALLED IN ALL TURF AREAS, ROTOR HEADS IN TURF AREAS TO BE 6" POP-UPS.
- 6" POP-UP SPRAY HEADS SHALL BE INSTALLED IN ALL TURF AREAS, ROTOR HEADS IN TURF AREAS TO BE 6" POP-UPS.
- ONTO PAVED SURFACES, ADJUSTABLE NOZZLES SHALL BE USED IN AREAS WHERE FIXED SPRAY PATTERNS WOULD RESULT IN OVERTHROW ONTO PAVED SURFACES. ADJUST PRESSURE REGULATING VALVES TO PREVENT MISTING FROM HEADS.
- VALVE BOXES SHALL BE SIZED TO ACCOMMODATE INSTALLATION AND MAINTENANCE OF ZONE VALVES. THE VALVE BOXES SHALL BE INSTALLED SO THAT THE TOP OF THE BOX IS NO MORE THAN 1.5 INCH ABOVE FINISH GRADE AND SET PARALLEL TO THE SURROUNDING GRADE.
- ALL 24 VOLT CONTROL WIRING SHALL BE UL LISTED, SINGLE STRAND, TYPE UF 600 VOLT CONTROL CABLE. COMMON WIRES TO BE WHITE, AWG #12 OR LARGER WIRE. HOT WIRES TO BE RED, AWG #14 OR LARGER WIRE. SPARE WIRES TO BE ANY COLOR WIRE EXCEPT GREEN, RED OR WHITE, AWG #14 OR LARGER WIRE.
- ALL SPICES TO THE 24 VOLT CONTROL WIRING SHALL BE MADE WITH KING TECHNOLOGY (KING 6) SILICONE FILLED SAFETY CONNECTORS.
- SHRUB RISERS SHALL ONLY BE INSTALLED IN HEDGES OR MASS PLANTINGS ABUTTING VERTICAL WALLS OR OBJECTS AND NOT EXTEND MORE THAN 6" ABOVE THE HEIGHT OF THE SHRUBS. IN NO CASE SHALL RISERS BE USED IN AREAS ABUTTING PAVING AREAS WITHOUT CONCRETE WHEELS. RISERS MUST BE PLACED A MINIMUM OF 30 INCHES AWAY FROM THE EDGE OF PAVEMENT TO PROTECT THE RISER FROM DAMAGE BY VEHICULAR OVERHANG. ALL RISERS ARE TO BE PAINTED BLACK.
- MAINLINE PIPING SHALL HAVE THRUST BLOCKS SIZED AND PLACED IN ACCORDANCE WITH THE PIPE MANUFACTURER'S RECOMMENDATIONS. THRUST BLOCKS SHALL BE INSTALLED AT ALL CHANGES IN DIRECTION, REDUCTION IN PIPE SIZE, AND END CAPS ON THE MAINLINE.

CONTRACTOR NOTICE
The contractor shall be responsible for the installation of this system. The manufacturer's instructions and specifications shall be followed. The contractor shall be responsible for the installation of this system. The manufacturer's instructions and specifications shall be followed.

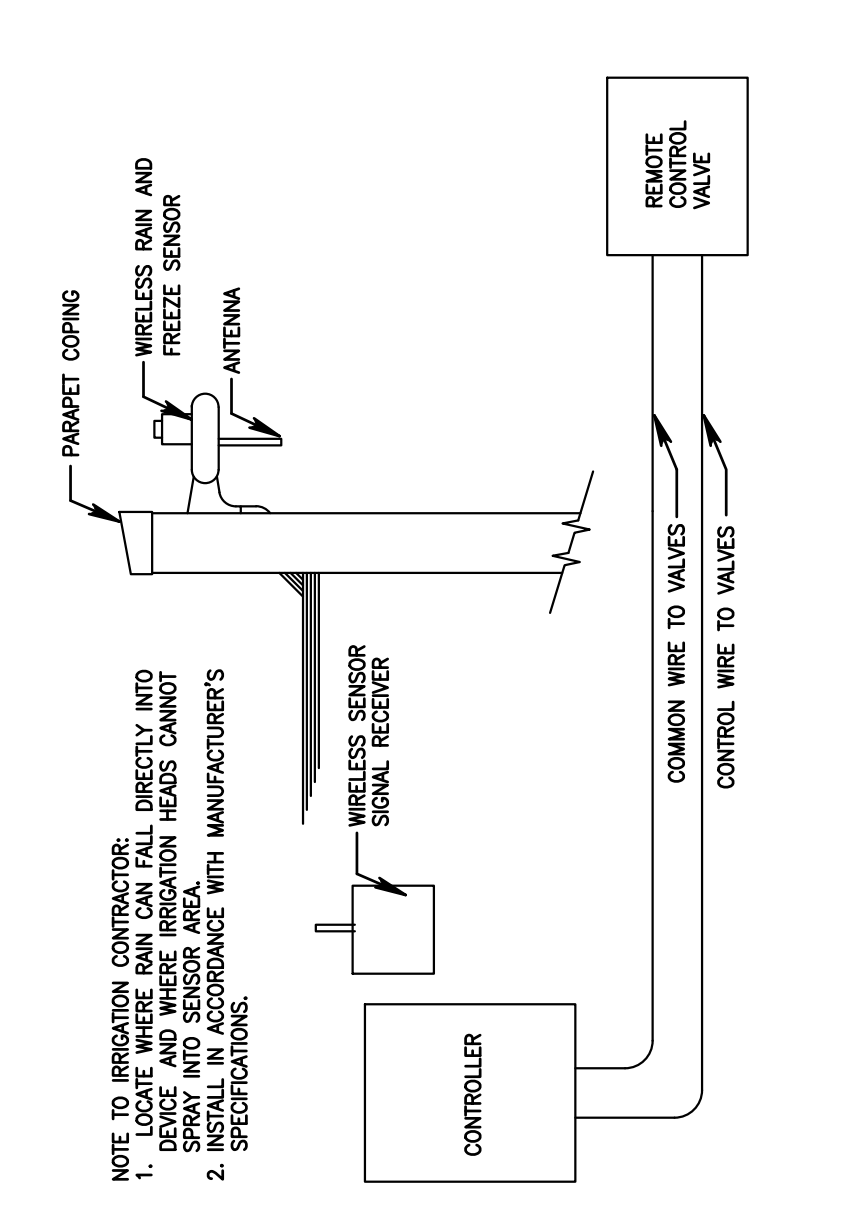
12/07/21	OWNERS REVIEW SET
12/17/21	1ST SUBMITTAL
2/01/22	2ND SUBMITTAL
2/10/22	3RD SUBMITTAL
	ISSUED RECORD



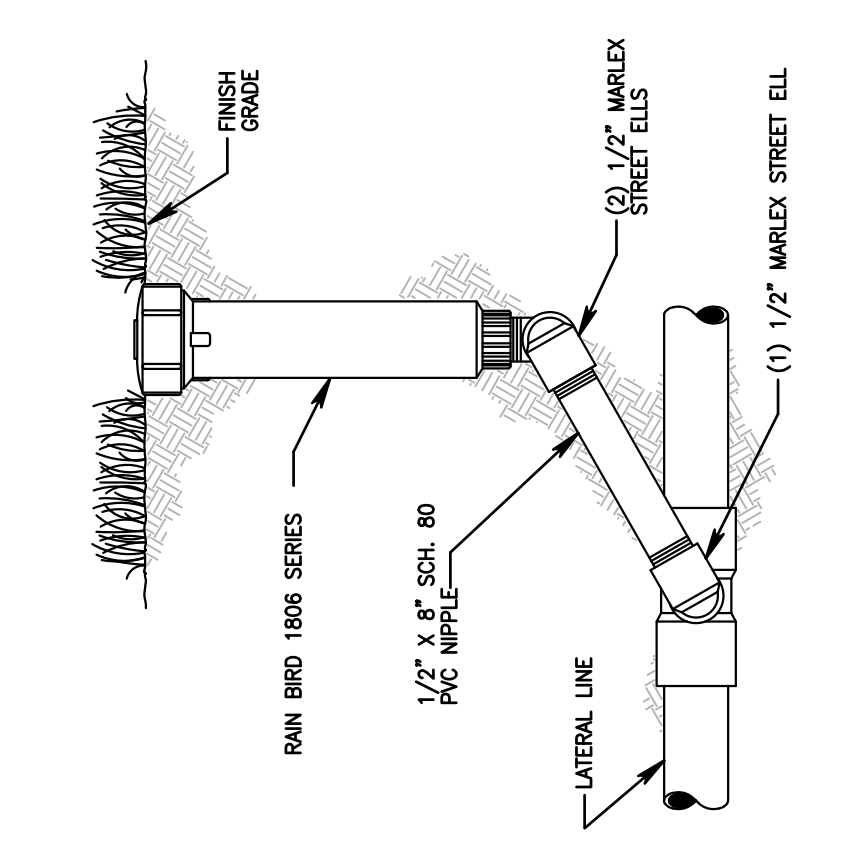
PROJECT NUMBER: 20200946.0
PROFESSIONAL IN CHARGE: ALEX MADDOX
PROJECT MANAGER: RYAN SCOTT
QUALITY CONTROL: RYAN SCOTT
DRAWN BY: NICOLE NOVACK
Drawing Title: IRRIGATION DETAILS



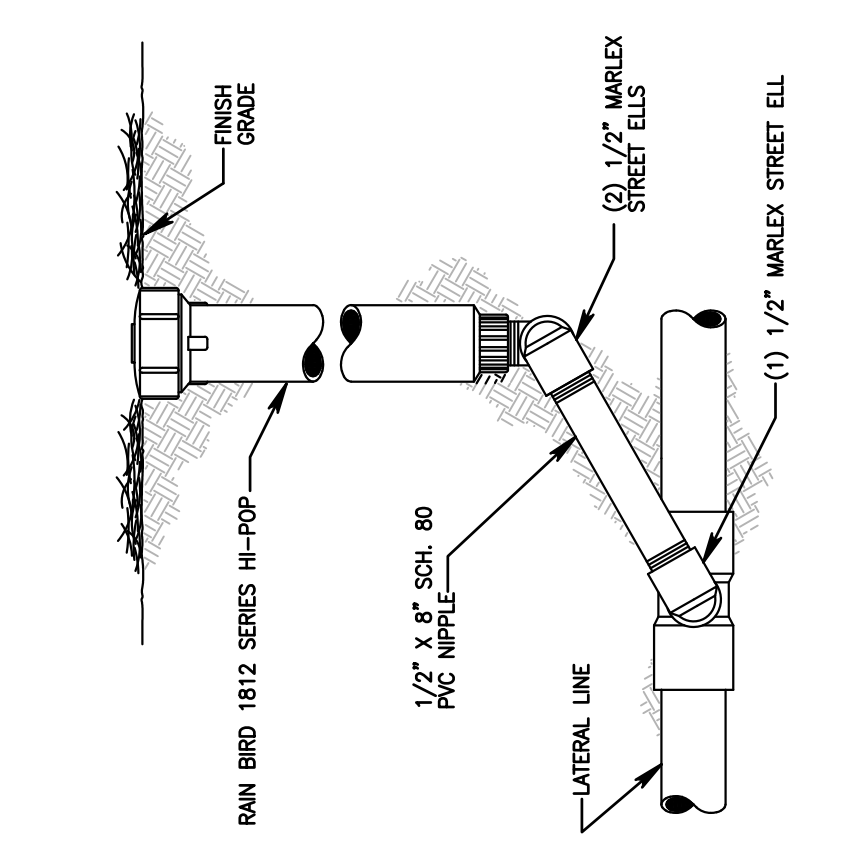
1 CONTROL VALVE
SCALE: NTS



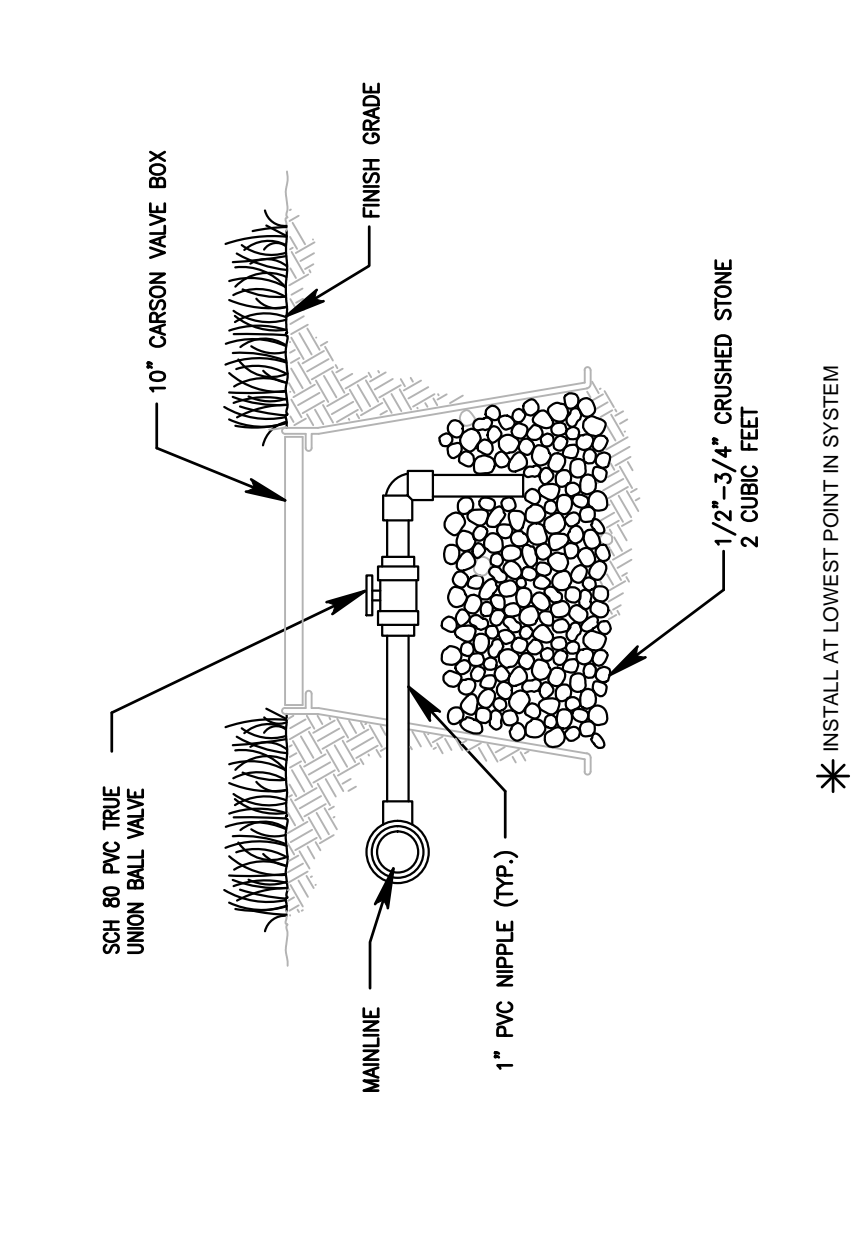
2 RAIN SENSOR
SCALE: NTS



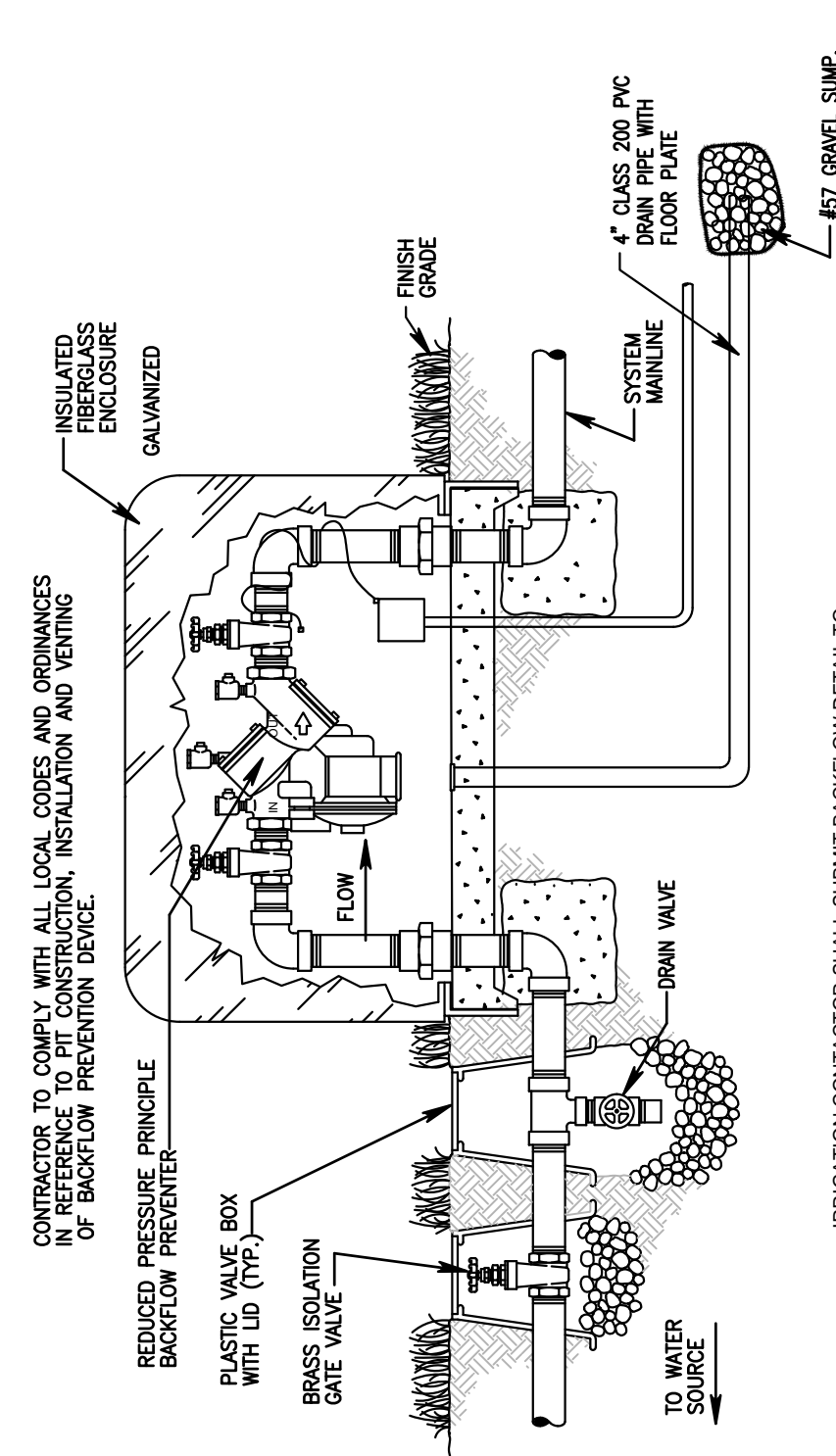
3 LAWN SPRAY
SCALE: NTS



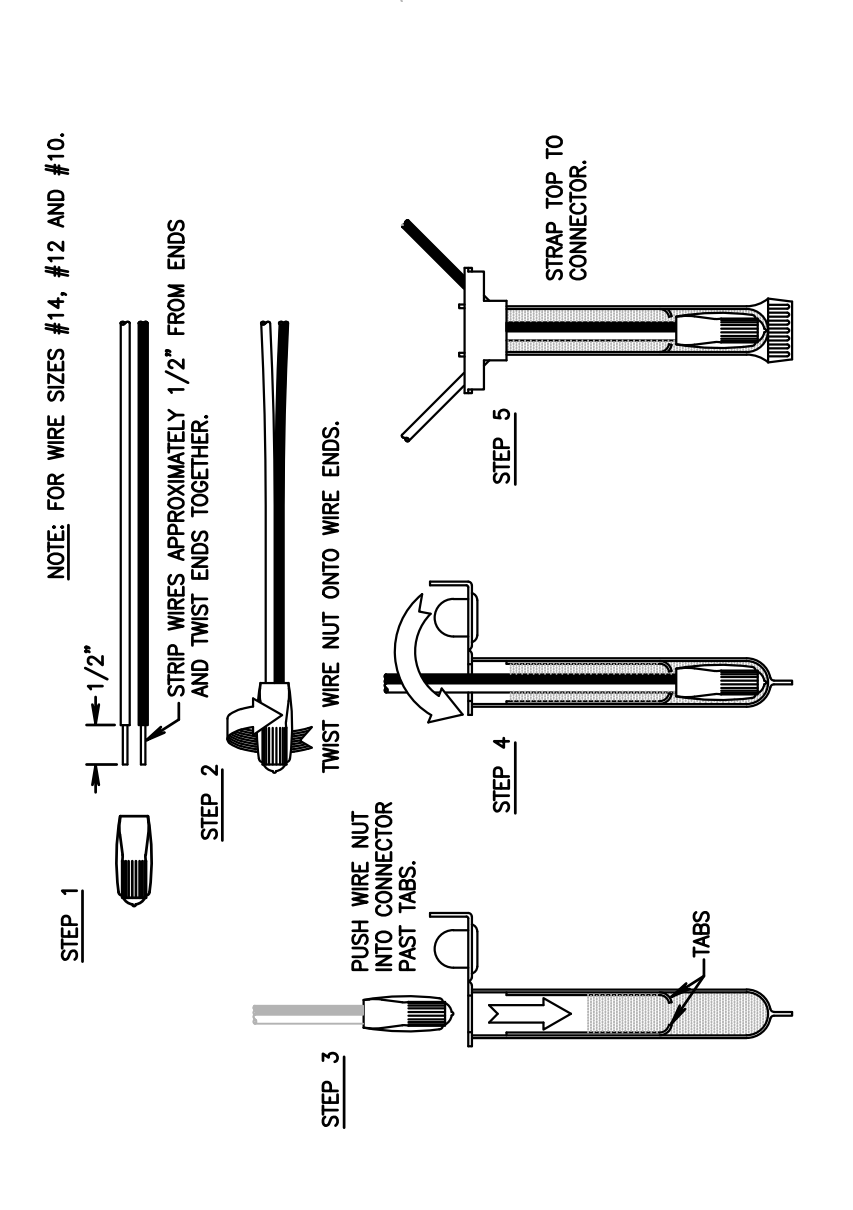
4 SHRUB SPRAY
SCALE: NTS



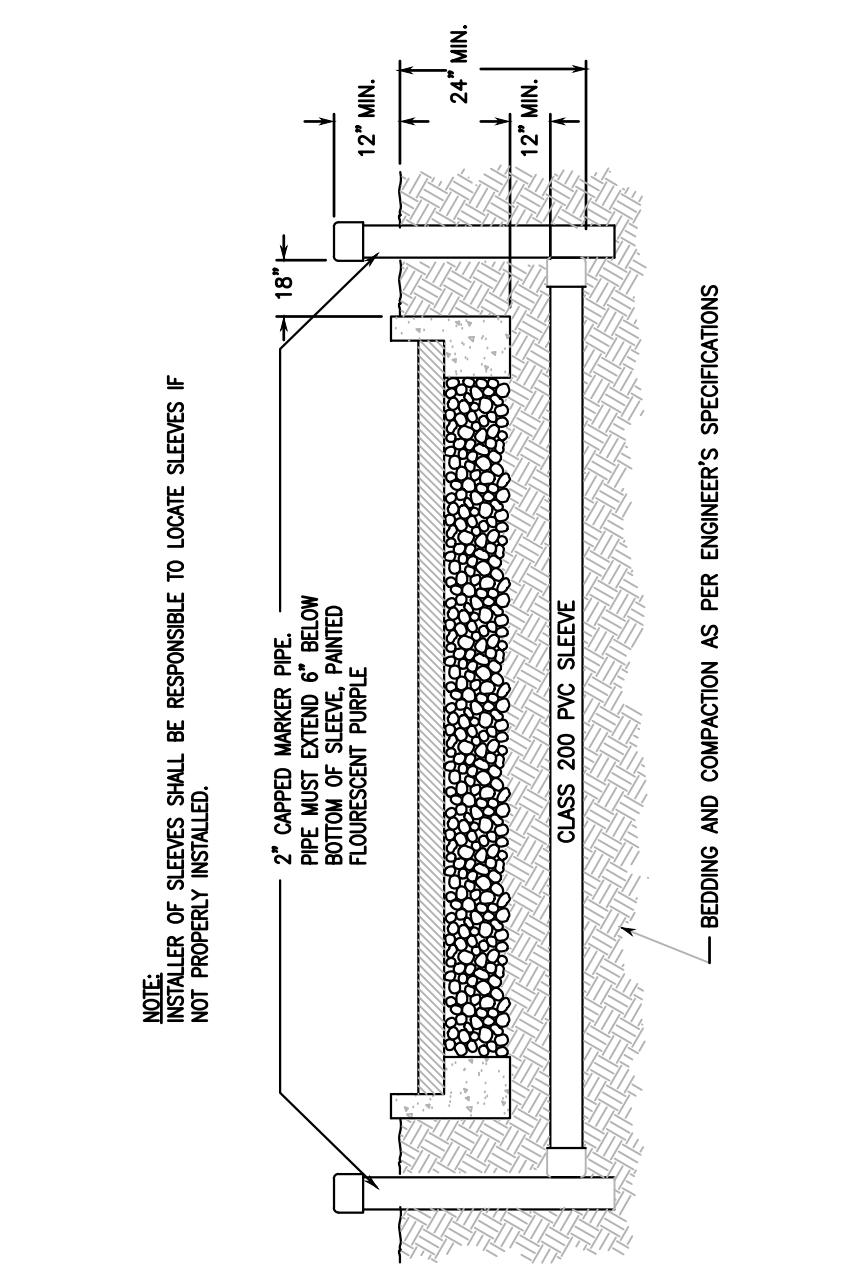
5 MANUAL DRAIN VALVE
SCALE: NTS



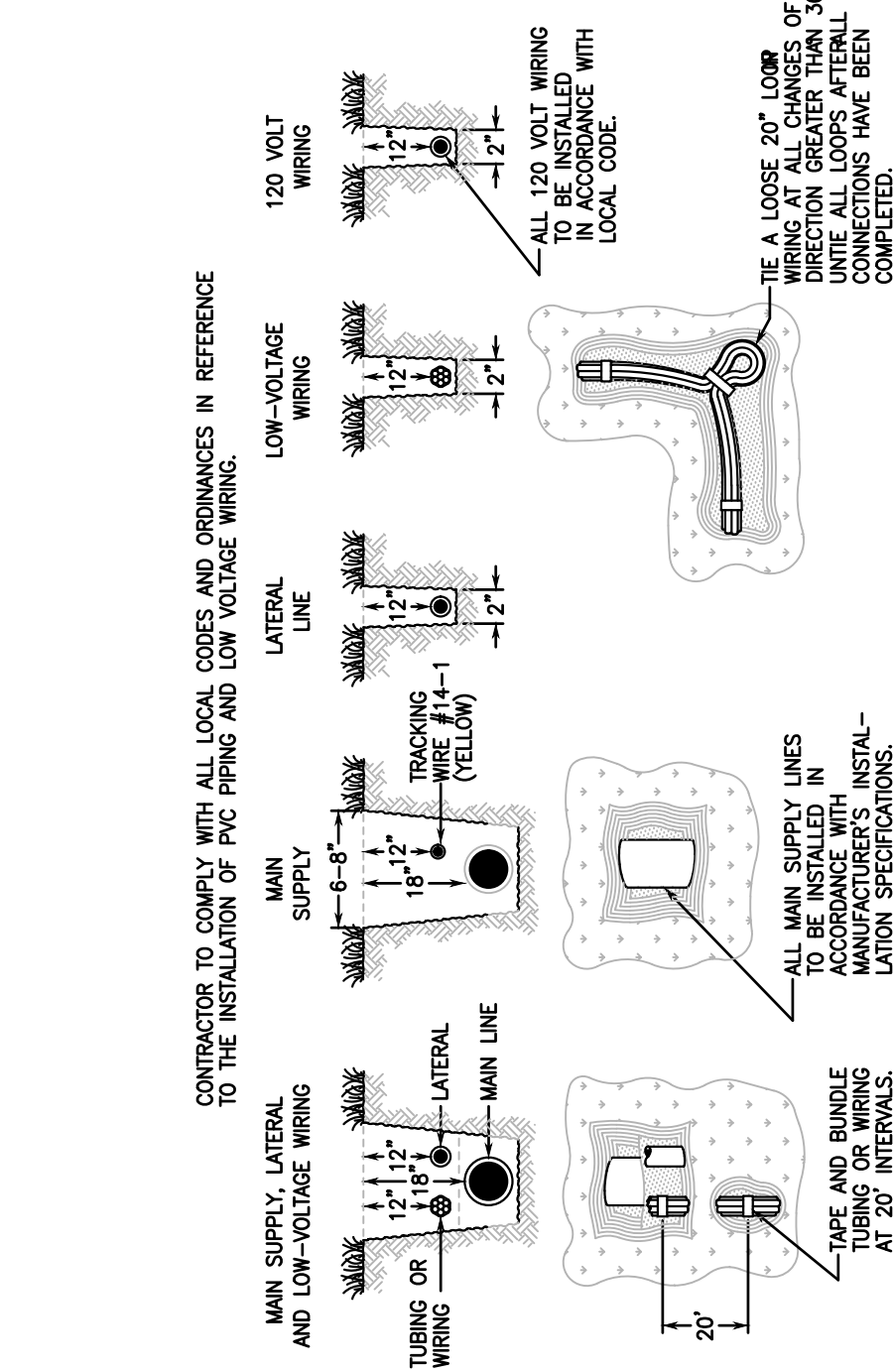
6 RPA BACKFLOW DEVICE
SCALE: NTS



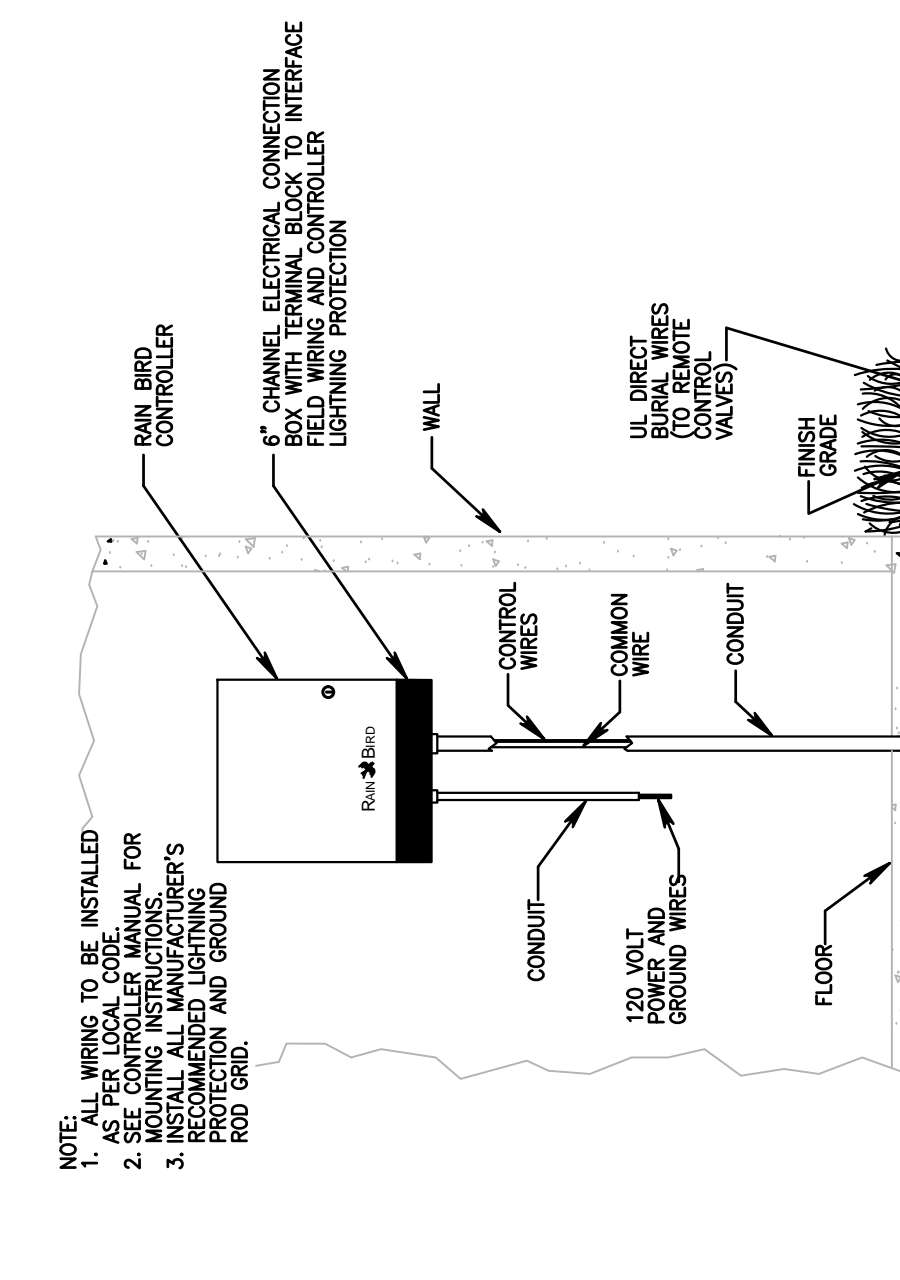
7 WIRE CONNECTION 3M-DPR/Y6
SCALE: NTS



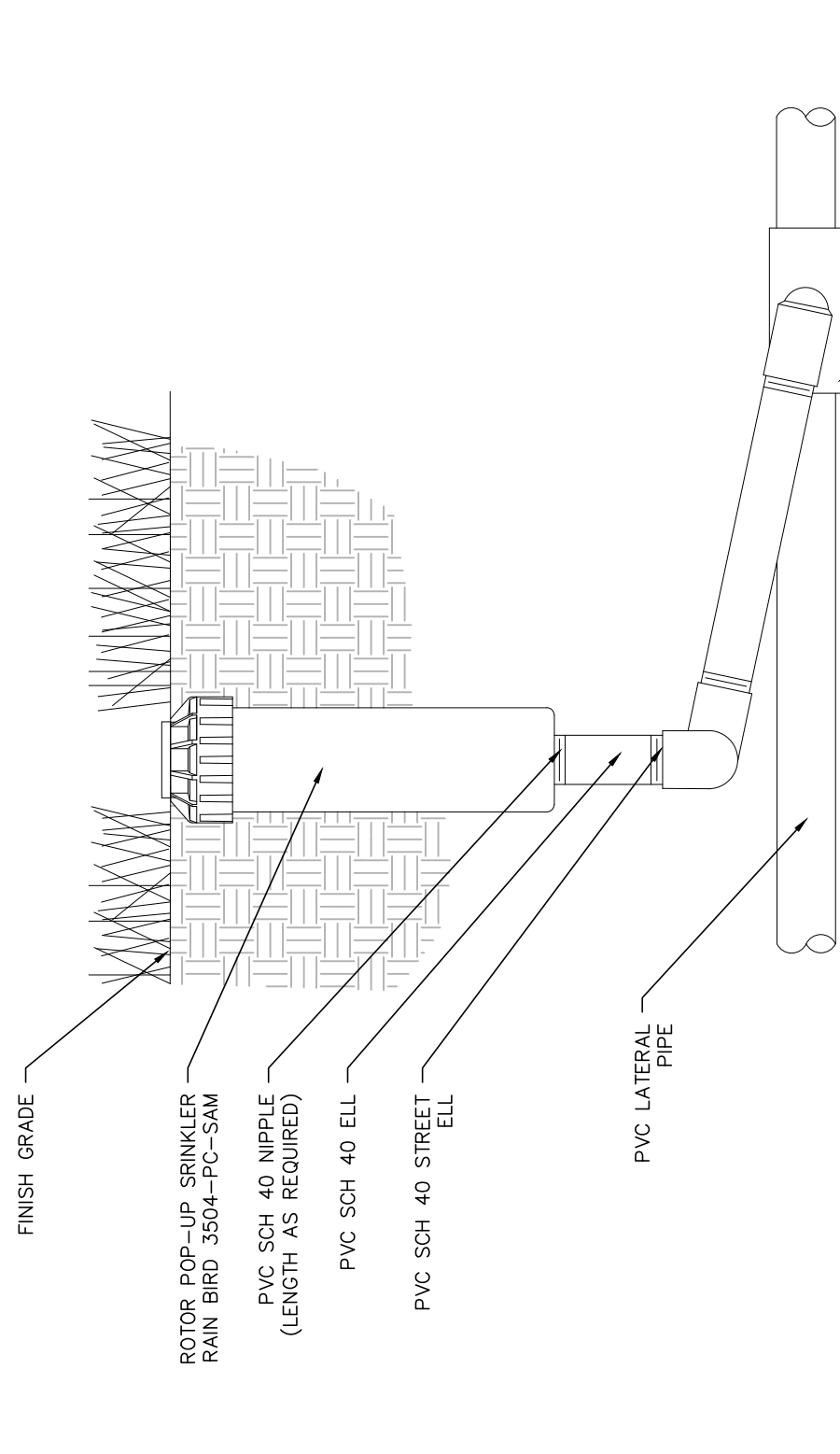
8 SLEEVING
SCALE: NTS



9 TRENCHING
SCALE: NTS



10 CONTROLLER
SCALE: NTS



11 TURF ROTOR W/ POP-UP SWING JOINT
SCALE: NTS

NOTE: ALL IRRIGATION EQUIPMENT IS TO BE HANBRO, NO SUBSTITUTIONS