

**Cobb County Board of Education
Board Meeting Agenda
Thursday, November 11, 2021**

BOARD MEETING – 1:00 p.m.

- 1. Call to Order**

- 2. Recess to Executive Session**

WORK SESSION – 3:00 p.m.

- 1. Reconvene from Executive Session**

- 2. Pledge of Allegiance**

- 3. Public Comment**

- 4. Approval of Minutes**
 - Thursday, October 14, 2021, Board Meeting
 - Thursday, October 28, 2021, Called Board Meeting
 - Wednesday, November 3, 2021, Called Board Meeting

- 5. Superintendent's Report**
 - Legislative Priorities (For Potential Action)
 - Monthly and Quarterly Board Financial Report

6. BOARD AGENDA ITEMS

AGENDA ITEM #1 – Recommendation for Authorization of School Properties Disposal per District Administrative Rule DO-R

AGENDA ITEM #2 – Recommendation to Amend the Lease Agreements with SBA Monarch Towers I, LLC., for Cell Towers at North Cobb High School, Walton High School, and Floyd Middle School

AGENDA ITEM #3 – Recommendation for Approval of a Temporary Construction Easement and a Permanent Sewer Easement with Michael Holt at Dowell Elementary School

- 7. Board Business**
 - Facilities & Technology Citizens Oversight Committee Report – Mr. Wheeler

- 8. Approval of Agenda**

- 9. Recess to Executive Session**

**Cobb County Board of Education
Board Meeting Agenda
Thursday, November 11, 2021**

7:00 p.m. VOTING SESSION

1. Reconvene from Executive Session

2. Pledge of Allegiance

3. Board Recognitions

- Cobb STEM Certification – Rocky Mount Elementary School
- Cobb STEM Certification – Garrison Mill Elementary School
- Cobb STEM Certification – East Cobb Middle School
- Cobb STEM Certification – Barber Middle School
- Cobb STEM Certification – Sprayberry High School
- 2020 Georgia Council of Teachers of Mathematics Bill E. Bombart Award – Dr. Miranda Westbrook
- 2020 Georgia Council of Teachers of Mathematics Dwight Love Award – Vinita Prasad

4. Public Comment

5. Items Requiring Action following Executive Session (if any)

- Personnel
- Land
- Legal

6. Superintendent's Remarks

7. ACTION AGENDA

The following Action Agenda Items will be presented for a vote at the Thursday, November 11, 2021, Board Meeting:

ACTION AGENDA ITEM #1 – Recommendation for Authorization of School Properties Disposal per District Administrative Rule DO-R

ACTION AGENDA ITEM #2 – Recommendation to Amend the Lease Agreements with SBA Monarch Towers I, LLC., for Cell Towers at North Cobb High School, Walton High School, and Floyd Middle School

ACTION AGENDA ITEM #3 – Recommendation for Approval of a Temporary Construction Easement and a Permanent Sewer Easement with Michael Holt at Dowell Elementary School

8. Adjourn

Pending Board Approval

**THESE MINUTES ARE NOT OFFICIAL
UNTIL APPROVED BY THE BOARD OF
EDUCATION AND SIGNED BY THE
CHAIRMAN AND EXECUTIVE SECRETARY**

**BOARD MEETING
THURSDAY, OCTOBER 14, 2021**

All official meetings of the Cobb County Board of Education conform to state law and are open to the public. The minutes of this meeting are available for public review anytime during the regular office hours or on our website: www.cobbk12.org

WORK SESSION

The Cobb County Board of Education convened for a regularly scheduled Board Meeting on Thursday, October 14, 2021, at 1:30 p.m., at 514 Glover Street, with the following members present: Messrs. Banks, Chastain, Hutchins, Scamihorn, Wheeler, Dr. Howard, Mr. Ragsdale, Executive Secretary, Ms. Gupta and Ms. Wilcox, Interim Board Attorneys. Mrs. Davis was not present for the meeting.

CALL TO ORDER AND PLEDGE OF ALLEGIANCE

Mr. Scamihorn, Board Chair, called the meeting to order at 1:31 p.m. and led the group in the Pledge of Allegiance.

PUBLIC COMMENT

There was (1) public commenter.

APPROVAL OF MINUTES

Without objection, the Board approved the following minutes:

- Thursday, September 23, 2021, Board Meeting
- Thursday, October 7, 2021, Called Board Meeting

Mr. Banks arrived to the meeting at 1:39 p.m.

SUPERINTENDENT'S REPORT

- Mathematics Update
 - Chief Academic Officer Jennifer Lawson shared a detailed overview with the Board on Cobb's Mathematics Program. The presentation included information on the revision of state standards, resources, targeted initiatives, and student achievement data.
- Hiring and Compensation Presentation
 - Chief Human Resources Officer Keeli Bowen provided information to the Board on the hiring and recruiting process of the District. Ms. Bowen also shared detailed information on the District's compensation program that attracts and retains highly qualified employees.

The Board took a ten-minute break at 3:16 p.m. and reconvened at 3:25 p.m.

- Monthly Board Financial Status Update
 - Chief Financial Officer Bradley Reuben Johnson presented the monthly school district financial status update to the Board.
- General Fund Proforma Financial Report
 - Mr. Bradley Reuben Johnson, Chief Financial Officer, presented to the Board the General Fund Proforma Financial Report as of June 30, 2021 (unaudited estimate).

BOARD AGENDA ITEMS

The Board discussed the Agenda Items listed below. These items will be brought forth for a vote during the Voting Session of the Thursday, October 14, 2021, Board Meeting:

AGENDA ITEM #1 – Recommendation for Authorization of School Properties Disposal per District Administrative Rule DO-R

- Without objection, this item was placed on the **Consent Agenda** for the Voting Session of the Thursday, October 14, 2021, Board Meeting.

AGENDA ITEM #2 – Authorization to Purchase Twelve (12) School Buses

- Without objection, this item was placed on the **Discussion Agenda** for the Voting Session of the Thursday, October 14, 2021, Board Meeting.

AGENDA ITEM #3 – Recommendation for Approval to Award a Contract for Sope Creek Elementary School Physical Education Building Replacement

- Without objection, this item was placed on the **Discussion Agenda** for the Voting Session of the Thursday, October 14, 2021, Board Meeting.

AGENDA ITEM #4 – Recommendation for Approval to Award a Contract for Sprayberry High School Gymnasium and CTAE (Career, Technical, and Agriculture Education) Renovation

- Without objection, this item was placed on the **Discussion Agenda** for the Voting Session of the Thursday, October 14, 2021, Board Meeting.

BOARD BUSINESS

- Antisemitism and Racism Resolution (For Potential Action) – Mr. Scamihorn
 - A motion was made by Mr. Hutchins, seconded by Dr. Howard, to table the item until next month. Following discussion, Messrs. Banks, Chastain, Scamihorn, and Wheeler voted “Nay,” and Dr. Howard and Mr. Hutchins voted “Yea.” Mrs. Davis was absent for the vote. Motion failed 4-2.
 - A motion was made by Mr. Scamihorn, seconded by Mr. Chastain, to approve the resolution as written and received by Board Members (Attachment 1). Discussion followed.
 - Dr. Howard made a motion, seconded by Mr. Hutchins, to amend the current resolution with the following statement “*WHEREAS, the Cobb County School District and Board of Education humbly regret the current school names that honor Confederate military leaders and will move with all deliberate speed to rename them in an appropriate way that reflects the goal of inclusion.*” Messrs. Banks, Chastain, Scamihorn, and Wheeler voted “Nay,” and Dr. Howard and Mr. Hutchins voted “Yea.” Mrs. Davis was absent for the vote. Motion failed 4-2.
 - Mr. Chastain called the question for the motion on the floor.

- Mr. Hutchins called for a point of order stating that last month the Board announced they would be working on an Antisemitism Resolution and the resolution on the table is an Antisemitism and Racism Resolution.
- The Parliamentarian stated there was still an open motion on the floor that needed to be voted on.
- The Board Chair called for the vote on open motion to approve the resolution as shared with the Board. Messrs. Banks, Chastain, Scamihorn, and Wheeler voted “Yea,” and Dr. Howard and Mr. Hutchins voted “Nay.” Mrs. Davis was absent for the vote. Motion passed 4-2.

APPROVAL OF AGENDA

- An objection was made by Dr. Howard to approve the agenda without knowing if there would be additional conversation relating to COVID under the Superintendent’s Report during the upcoming Voting Session.
- A motion was made by Mr. Scamihorn, seconded by Mr. Banks, and approved by the Board to approve the agenda as presented. Messrs. Banks, Chastain, Hutchins, Scamihorn, and Wheeler voted “Yea,” and Dr. Howard voted “Nay.” Mrs. Davis was absent for the vote. Motion carried 5-1.

RECESS TO EXECUTIVE SESSION

A motion was made by Mr. Banks, seconded by Mr. Wheeler, and unanimously approved by the Board to convene to Executive Session at 4:11 p.m. to discuss legal, student, and personnel matters. Mrs. Davis was absent for the vote. Motion carried 6-0.

VOTING SESSION

The Cobb County Board of Education met for a regularly scheduled Board Meeting on Thursday, October 14, 2021, with the following members present: Messrs. Banks, Chastain, Hutchins, Scamihorn, Wheeler, Dr. Howard, Mr. Ragsdale, Executive Secretary, Ms. Gupta and Ms. Wilcox, Interim Board Attorneys. Mrs. Davis was not present for the meeting.

RECONVENE

Without objection, the Board reconvened at 7:02 p.m.

PLEDGE OF ALLEGIANCE

Mr. Scamihorn, Board Chair, led the group in the Pledge of Allegiance.

BOARD RECOGNITIONS

- National School Bus Safety Week – October 18-22, 2021
- CCSD Bus Driver Appreciation Week – October 18-22, 2021

PUBLIC COMMENT

- Prior to Public Comment, Mr. Scamihorn, Board Chair, invited Mr. Herschel Greenblatt to address the Board.

There were twelve (12) public commenters.

ITEMS REQUIRING ACTION FOLLOWING EXECUTIVE SESSION

Personnel Report

Administration recommended approval of the identified employment actions of the individuals listed on the Personnel Action Report as discussed in Executive Session.

Section I – Principal Level and Higher Position Recommendations

- None

Section II – Position Recommendations Below Principal Level

Elementary School

- None

Middle School

- None

High School

- Ellis, Wesley, Appointment to Assistant Principal, Harrison High School from Teacher, Hillgrove High School effective October 18, 2021.
 - A motion was made by Mr. Banks, seconded by Mr. Wheeler, and approved by the Board to approve the Personnel Action Report as presented in Executive Session. Messrs. Banks, Chastain, Hutchins, Scamihorn, Wheeler, and Dr. Howard voted “Yea.” Mrs. Davis was absent for the vote. Motion carried 6-0.

Student Matter – C.H. - Cobb Online Learning Academy

- A motion was made by Mr. Chastain, seconded by Mr. Wheeler, and approved by the Board to uphold the hearing officer’s decision regarding the student discipline matter as discussed in Executive Session. Messrs. Banks, Chastain, Hutchins, Scamihorn, Wheeler, and Dr. Howard voted “Yea.” Mrs. Davis was absent for the vote. Motion carried 6-0.

SUPERINTENDENT’S REMARKS

The Superintendent commented on various items occurring throughout the Cobb County School District including an overview of expenditures by post for SPLOST I-V.

ACTION AGENDA:

CONSENT AGENDA

ACTION AGENDA ITEM #1 – Recommendation for Authorization of School Properties Disposal per District Administrative Rule DO-R

- Without objection, the Board approved the **Consent Agenda Item** as presented.

DISCUSSION AGENDA

DISCUSSION AGENDA ITEM #2 – Authorization to Purchase Twelve (12) School Buses

- A motion was made by Dr. Howard, seconded by Mr. Wheeler, and approved by the Board to Purchase Twelve (12) School Buses in the amount of \$1,439,196.00 from Yancey Bus Sales and Service. Messrs. Banks, Chastain, Hutchins, Scamihorn, Wheeler, and Dr. Howard voted “Yea.” Mrs. Davis was absent for the vote. Motion carried 6-0.

DISCUSSION AGENDA ITEM #3 – Recommendation for Approval to Award a Contract for Sope Creek Elementary School Physical Education Building Replacement

- A motion was made by Dr. Howard, seconded by Mr. Banks, and approved by the Board to award a contract to Swofford Construction, Inc., Austell, GA, in the amount of \$2,838,000.00 for the Sope Creek Elementary School Physical Education Building replacement. Messrs. Banks, Chastain, Hutchins, Scamihorn, Wheeler, and Dr. Howard voted “Yea.” Mrs. Davis was absent for the vote. Motion carried 6-0.

DISCUSSION AGENDA ITEM #4 – Recommendation for Approval to Award a Contract for Sprayberry High School Gymnasium and CTAE (Career, Technical, and Agriculture Education) Renovation

- A motion was made by Mr. Chastain, seconded by Mr. Hutchins, and approved by the Board to award a contract to Balfour Beatty Construction, LLC., Atlanta, GA, in the amount of \$22,932,681.00 for the Sprayberry High School Gymnasium and CTAE (Career, Technical, and Agriculture Education) renovation. Messrs. Banks, Chastain, Hutchins, Scamihorn, Wheeler, and Dr. Howard voted “Yea.” Mrs. Davis was absent for the vote. Motion carried 6-0.

ADJOURN

Without objection, The Board adjourned the meeting at 7:58 p.m.

CHAIRMAN

EXECUTIVE SECRETARY



BOARD OF EDUCATION

ANTISEMITISM AND RACISM RESOLUTION

- WHEREAS, the Cobb County School District has long been a diverse organization committed to the equal and respectful treatment for every student, family, employee, and other stakeholders; and
- WHEREAS, antisemitism, racism, and other forms of hate have no place in our county; and
- WHEREAS, our community has recently suffered acts of antisemitism when individuals defaced two schools with antisemitic symbols (swastikas) and other antisemitic hate speech; and
- WHEREAS, these acts were all the more heinous, as they were committed during the High Holy Days, the holiest time in the Jewish faith; and
- WHEREAS, the Cobb County School District, the School Board, the Superintendent, and all employees district-wide are deeply saddened by and unequivocally condemn these abhorrent and heinous acts; and
- WHEREAS, these acts demonstrate that antisemitism, racism, and other forms of hate still exist in our communities and must be addressed, requiring our full commitment to actively work and continue to build an inclusive school district built on trust and respect for all; and
- WHEREAS, our best efforts at district-wide listening and district-wide learning are necessary to provide policies and actions that promote and ensure equal and respectful treatment to all students, families, employees, and stakeholders; and
- WHEREAS, the people of the Cobb County School District appreciate the overwhelming support from our great community, and hereby redouble our ongoing commitment to provide fair treatment to all members of the community; and
- WHEREAS, to maintain welcoming and inclusive school communities, the Board wishes to reaffirm its continued commitment to take proactive steps to address antisemitism, racism, and all other forms of hate in Cobb County School District.

THEREFORE, IT IS RESOLVED this 14th day of October 2021, that the Cobb County School Board, the Superintendent and all employees of the Cobb County School District, hereby stand steadfast with all citizens of Cobb County against antisemitic, racism, and hatred in all its forms and continue our commitment to stand up for justice, inclusivity, and support civil rights for all. To maintain welcoming and inclusive school communities, the Board reaffirms its continued commitment to take proactive steps to address antisemitism, racism, and all other forms of hate in Cobb County School District.

A handwritten signature in blue ink that reads "Randy Scamihorn".

Randy Scamihorn, Chairman
Cobb County School District
Board of Education

PENDING BOARD APPROVAL

**THESE MINUTES ARE UNOFFICIAL UNTIL
APPROVED BY THE BOARD AND SIGNED BY
THE CHAIRMAN AND EXECUTIVE SECRETARY**

**CALLED BOARD MEETING
COBB COUNTY, GEORGIA
THURSDAY, OCTOBER 28, 2021**

The Cobb County Board of Education met in a Called Board Meeting at 10:00 a.m. on Thursday, October 28, 2021, at 514 Glover Street, with the following members present: Messrs. Banks, Chastain, Hutchins, Scamihorn, Wheeler, Mr. Ragsdale, Executive Secretary, Mrs. Wilcox, Interim Board Attorney. Mrs. Davis and Dr. Howard were away from the venue and participated via teleconference.

All official meetings of the Cobb County Board of Education conform to state law and are open to the public. The minutes of this meeting are available for public review anytime during the regular office hours or on our website at www.cobbk12.org

CALL TO ORDER

Mr. Scamihorn called the meeting to order at 10:00 a.m.

EXECUTIVE SESSION

A motion was made by Mr. Chastain, seconded by Mr. Hutchins, and approved by the Board to convene to Executive Session at 10:01 a.m. for a student matter. Motion carried 4-0. Mrs. Davis, Dr. Howard, and Mr. Banks were not present for the vote.

Mr. Banks arrived to Executive Session at 10:02 a.m.

Mrs. Davis and Dr. Howard joined Executive Session via teleconference.

Dr. Howard recused himself from Executive Session.

RECONVENE FROM EXECUTIVE SESSION

Without objection, the Board reconvened from Executive Session at 10:42 a.m.

STUDENT DISCIPLINE APPEAL – N.G. – Campbell High School

A motion was made by Mr. Chastain, seconded by Mr. Banks, and approved by the Board to uphold the determination of the student disciplinary tribunal as discussed in Executive Session. Messrs. Banks, Chastain, Hutchins, Scamihorn, and Wheeler voted “Yea,” Mrs. Davis voted “Nay,” and Dr. Howard abstained from the vote. Motion carried 5-1-1.

ADJOURN

Without objection, the meeting adjourned at 10:45 a.m.

CHAIRMAN

EXECUTIVE SECRETARY

PENDING BOARD APPROVAL

**THESE MINUTES ARE UNOFFICIAL UNTIL
APPROVED BY THE BOARD AND SIGNED BY
THE CHAIRMAN AND EXECUTIVE SECRETARY**

CALLED BOARD MEETING
COBB COUNTY, GEORGIA
WEDNESDAY, NOVEMBER 3, 2021

The Cobb County Board of Education met in a Called Board Meeting at 10:00 a.m. on Wednesday, November 3, 2021, at 514 Glover Street, with the following members present: Messrs. Banks, Chastain, Hutchins, Scamihorn, Wheeler, Mr. Ragsdale, Executive Secretary, Mrs. Gupta and Mrs. Wilcox, Interim Board Attorneys. Mrs. Davis was away from the venue and participated via teleconference. Dr. Howard was absent from the meeting.

All official meetings of the Cobb County Board of Education conform to state law and are open to the public. The minutes of this meeting are available for public review anytime during the regular office hours or on our website at www.cobbk12.org

CALL TO ORDER

Mr. Scamihorn called the meeting to order at 10:01 a.m.

EXECUTIVE SESSION

A motion was made by Mr. Chastain, seconded by Mr. Hutchins, and approved by the Board to convene to Executive Session at 10:01 a.m. for a student matter. Motion carried 5-0. Mrs. Davis and Dr. Howard were not present for the vote.

Mrs. Davis joined Executive Session via teleconference.

RECONVENE FROM EXECUTIVE SESSION

Without objection, the Board reconvened from Executive Session at 10:28 a.m.

STUDENT DISCIPLINE APPEAL – R.H. – Garrett Middle School

A motion was made by Mr. Hutchins, seconded by Mr. Wheeler, and unanimously approved by the Board to uphold the determination of the student disciplinary tribunal as discussed in Executive Session. Motion carried 6-0. Dr. Howard was not present for the vote.

ADJOURN

Without objection, the meeting adjourned at 10:29 a.m.

CHAIRMAN

EXECUTIVE SECRETARY

**COBB COUNTY BOARD OF EDUCATION
AGENDA ITEM
November 11, 2021**

TOPIC:

AGENDA ITEM #1 – Recommendation for Approval of School Properties Disposal per District Administrative Rule DO-R

BACKGROUND/RATIONALE:

Through normal operations, the district generates surplus property and equipment due to damage and obsolescence on a regular basis. Items that are no longer needed by a school or department but are still in good condition and re-usable are made available to other schools and departments at no charge. Items that are no longer usable in the District are declared surplus. **State Law requires School Board approval for District Property to be designated as surplus under §20-2-520 of the Georgia Code of Laws.** The need to dispose of these items in an efficient, cost effective and expeditious manner is imperative to the district. Items are currently stored in the District warehouse that have been deemed surplus. A complete list of current surplus items is on file in the Superintendent's office or on the District's website under Meeting Agenda Items. All items listed are no longer of use by the District.

Methods available to dispose of surplus items include:

Public auction

Sealed bid or private sale

The State of Georgia Department of Administrative Services on-line and public auction services

Sale to other public-school districts at costs equal to previous auction results

Online auctions

Negotiated contracts

Upon Board approval of the attached lists, the Business Services Division will dispose of this surplus in a manner that is the most cost effective and efficient for the district as outlined in Administrative Rule DO-R. Acceptable methods of disposal will be continually reviewed to maximize our return on investment.

SUPERINTENDENT'S RECOMMENDATION:

Approve the recommendation for authorization of School Properties Disposal as detailed in the lists on file in the Superintendent's office.

COST:

The District will receive revenue for the disposal of these items. The revenues received will assist in deferring labor costs for management of the disposal process

Account Charge code: N/A

Budgeted: N/A

DATA SOURCES:

Marc Smith

Jill Vestal

Stephen Cochran

October 2021 Inventoried Surplus
Picked Up and Verified 09/14/2021 thru 10/18/2021

TOTAL ASSETS

TECHNOLOGY

Quantity	ClassDesc	PropertyTag	Serial Number	Purchase Date
1	COMPUTER- LAPTOP	1935011	NXSHEAA002433051A97600	11/14/14
1	COMPUTER- LAPTOP	1935013	NXSHEAA0024330D1F97600	11/14/14
1	COMPUTER- LAPTOP	1960120	43107578076	05/24/17
1	COMPUTER- LAPTOP	1960121	43305064576	05/24/17
1	COMPUTER- LAPTOP	1960122	43305011776	05/24/17
1	COMPUTER- LAPTOP	1960123	43305023576	05/24/17
1	COMPUTER- LAPTOP	1960124	43304905776	05/24/17
1	COMPUTER- LAPTOP	2500373	4H520051TJD	12/12/05
1	COMPUTER- DESKTOP	1838391	W87224MKVUX	08/29/07
1	COMPUTER- DESKTOP	1857283	W8735032VUV	09/21/07
1	COMPUTER- DESKTOP	1896065	H00450WXE86	12/07/10
1	COMPUTER- TABLET	1900420	DN6FQR5FDFHW	06/28/11
1	COMPUTER- TABLET	1900479	DN6FT26QDFHW	06/30/11
1	COMPUTER- TABLET	1901764	DKVGD1WNDFWH	08/10/11
1	COMPUTER- TABLET	1906999	DKVGQ22WDFHW	09/12/11
1	COMPUTER- TABLET	1908444	DMRG91K9DFHW	09/12/11
1	COMPUTER- TABLET	1906998	DN6G4DEWDFHW	09/12/11
1	COMPUTER- TABLET	1908449	DKVJD2HLDFHW	09/12/11
1	COMPUTER- TABLET	1902171	DN6GCNREDFHW	09/12/11
1	COMPUTER- TABLET	1900525	DQVGC43RDFHW	09/19/11
1	COMPUTER-TEACHER LAPTOP	1901537	D92GC8J2DRJ7	10/13/11
1	COMPUTER- TABLET	1902293	DLXG95XUDFJ0	10/27/11
1	COMPUTER- LAPTOP	1903039	C02GK0QZDRJN	12/20/11
1	COMPUTER-TABLET	1902095	CQ1Z104RZ3A	12/22/11
1	COMPUTER- DESKTOP	1902777	H01390RPHT6	01/10/12
1	COMPUTER- DESKTOP	1902780	H01390RQTH6	01/10/12
1	COMPUTER- TABLET	1903269	DLXH18P2DFHW	02/16/12
1	COMPUTER- TABLET	1903284	DLXH181SDFHW	02/16/12
1	COMPUTER- TABLET	1903285	DLXH17ZSDFHW	02/16/12
1	COMPUTER- TABLET	1903286	DLXH185XDFHW	02/16/12
1	COMPUTER- TABLET	1903270	DN6GXLB0DKPJ	02/16/12
1	COMPUTER- TABLET	1903282	DN6GX3U2DKPJ	02/16/12
1	COMPUTER- TABLET	1904702	DMPHFL6YDJ8T	04/10/12
1	COMPUTER- TABLET	1902294	DMPHG3Z9DJ8R	04/10/12
1	COMPUTER- TABLET	1905670	DYTHK9ZXDJ8V	05/07/12
1	COMPUTER- TABLET	1902172	DYTHKATPDJ8V	05/07/12
1	COMPUTER- TABLET	1904929	DR5HKNQDDKPH	05/14/12
1	COMPUTER- TABLET	1904931	DR5HKRHVDKPH	05/14/12
1	COMPUTER- TABLET	1904932	DR6HK60QDKPH	05/14/12
1	COMPUTER- TABLET	1904934	DR6HKAEDKPH	05/14/12
1	COMPUTER- TABLET	1904935	DR5HKRN6DKPH	05/14/12
1	COMPUTER- TABLET	1904936	DR6HKJG9DKPH	05/14/12
1	COMPUTER- TABLET	1904937	DR6HKKXUDKPH	05/14/12
1	COMPUTER- TABLET	1904938	DR5HLOAYDKPH	05/14/12
1	COMPUTER- TABLET	1904939	DR5HKQV5DKPH	05/14/12
1	COMPUTER- TABLET	1904940	DR6HK6DKPD	05/14/12
1	COMPUTER- TABLET	1904941	DR5HKQTYDKPH	05/14/12
1	COMPUTER- TABLET	1904942	DR6HKLNQDKPH	05/14/12
1	COMPUTER- TABLET	1904943	DR5HKMZGDKPH	05/14/12

October 2021 Inventoried Surplus
Picked Up and Verified 09/14/2021 thru 10/18/2021

TOTAL ASSETS

1	COMPUTER- TABLET	1904944	DR6HK6FFDKPH	05/14/12
1	COMPUTER- TABLET	1904945	DR6HKM1ADKPH	05/14/12
1	COMPUTER- TABLET	1904946	DR6HKMGQDKPH	05/14/12
1	COMPUTER- TABLET	1904947	DR5HKQVTDKPH	05/14/12
1	COMPUTER- TABLET	1904948	DR6HKEBPDKPH	05/14/12
1	COMPUTER- TABLET	1904949	DR6HKDASDKPH	05/14/12
1	COMPUTER- TABLET	1904950	DR6HKD8TDKPH	05/14/12
1	COMPUTER- TABLET	1904951	DR6HK1G5DKPH	05/14/12
1	COMPUTER- TABLET	1904952	DR6HK6TJDKPH	05/14/12
1	COMPUTER- TABLET	1904953	DR6HKJKKDKPH	05/14/12
1	COMPUTER- TABLET	1904955	DR6HKAV2DKPH	05/14/12
1	COMPUTER- TABLET	1904956	DR5HKNRTDKPH	05/14/12
1	COMPUTER- TABLET	1904957	DR5HLOCWDKPH	05/14/12
1	COMPUTER- TABLET	1904958	DR6HKECVDKPH	05/14/12
1	COMPUTER- TABLET	1905290	DR6HKKZ0DKPH	05/25/12
1	COMPUTER- TABLET	1905303	DR5HLOLVDKPH	05/25/12
1	COMPUTER- TABLET	1905285	DR6HKMGPKPH	05/25/12
1	COMPUTER- TABLET	1902297	DR5HNC7TDFHW	06/11/12
1	COMPUTER- TABLET	1906689	DMPHNPAZDVD3	06/28/12
1	COMPUTER- TABLET	1906691	DMPHNNV4DVD3	06/28/12
1	COMPUTER- TABLET	1906408	DYTHWVQDKPH	06/28/12
1	COMPUTER- TABLET	1907231	DYHT4Y8DFHW	08/03/12
1	COMPUTER- TABLET	1907230	DYHT96DFHW	08/03/12
1	COMPUTER- TABLET	1902197	DYTJ61Q3DJ8V	08/22/12
1	COMPUTER- TABLET	1908673	DMRJCSMDDFW	09/21/12
1	COMPUTER- TABLET	1908675	DMRJCVJDDFW	09/21/12
1	COMPUTER- TABLET	1908677	DMRJCVKPDFHW	09/21/12
1	COMPUTER- TABLET	1908671	DMRJCVU8DFHW	09/21/12
1	COMPUTER- TABLET	1908669	DMTJ7A3DFHW	09/21/12
1	COMPUTER- TABLET	1908674	DMTJC819DFHW	09/21/12
1	COMPUTER- TABLET	1908676	DMTJC9BDDFW	09/21/12
1	COMPUTER- TABLET	1908670	DMTJCA2SDFHW	09/21/12
1	COMPUTER- TABLET	1909015	DYTJ4FSWDJ8R	11/12/12
1	COMPUTER- TABLET	1909016	DYTJ4995DJ8R	11/12/12
1	COMPUTER- TABLET	1909021	DYTJ4A4KDJ8R	11/12/12
1	COMPUTER- TABLET	1909023	DYTJ41TADJ8R	11/12/12
1	COMPUTER- TABLET	1909034	DYTJ41MKDJ8R	11/12/12
1	COMPUTER- TABLET	1909035	DYTJ421MDJ8R	11/12/12
1	COMPUTER- TABLET	1909038	DYTJ41RGDJ8R	11/12/12
1	COMPUTER- TABLET	1909039	DYTJ4AD9DJ8R	11/12/12
1	COMPUTER- TABLET	1909040	DYTJ45W9DJ8R	11/12/12
1	COMPUTER- TABLET	1909041	DYTJ48REDJ8R	11/12/12
1	COMPUTER- TABLET	1909042	DYTJ48UXDJ8R	11/12/12
1	COMPUTER- TABLET	1909043	DYTJ48T1DJ8R	11/12/12
1	COMPUTER- TABLET	1909044	DYTJ4A7TDJ8R	11/12/12
1	COMPUTER- TABLET	1909045	DYTJ490GDJ8R	11/12/12
1	COMPUTER- TABLET	1909047	DYTJ4A30DJ8R	11/12/12
1	COMPUTER- TABLET	1909048	DYTJ4GB6DJ8R	11/12/12
1	COMPUTER- TABLET	1909049	DYTJ45QZDJ8R	11/12/12
1	COMPUTER- TABLET	1909050	DYTJ40WMDJ8R	11/12/12
1	COMPUTER- TABLET	1906043	DMPHPCF4DVD3	01/07/13

October 2021 Inventoried Surplus
Picked Up and Verified 09/14/2021 thru 10/18/2021

TOTAL ASSETS

1	COMPUTER- TABLET	1906094	DMPHM3NNDVD3	01/07/13
1	COMPUTER- TABLET	1906103	DMPHN0NBDVD3	01/07/13
1	COMPUTER- DESKTOP	1910895	D25JT065DKLH	01/10/13
1	COMPUTER- DESKTOP	1910896	D25JT05QDKLH	01/10/13
1	COMPUTER- DESKTOP	1910883	D25JT0FTDKLH	01/10/13
1	COMPUTER- DESKTOP	1910871	D25JT0J0DKLH	01/10/13
1	COMPUTER- DESKTOP	1910892	D25JT0E1DKLH	01/10/13
1	COMPUTER- DESKTOP	1910882	D25JT0HSDKLH	01/10/13
1	COMPUTER- DESKTOP	1910899	D25JT0J6DKLH	01/10/13
1	COMPUTER- DESKTOP	1910881	D25JT0H8DKLH	01/10/13
1	COMPUTER- DESKTOP	1910869	D25JT0FPDKLH	01/10/13
1	COMPUTER- DESKTOP	1910897	D25JT0HDDKLH	01/10/13
1	COMPUTER- DESKTOP	1910889	D25JT0F4DKLH	01/10/13
1	COMPUTER- DESKTOP	1910901	D25JT0G6DKLH	01/10/13
1	COMPUTER- DESKTOP	1910886	D25JT0D7DKLH	01/10/13
1	COMPUTER- DESKTOP	1910887	D25JT0EPDKLH	01/10/13
1	COMPUTER- DESKTOP	1910888	D25JT0FUDKLH	01/10/13
1	COMPUTER- DESKTOP	1910906	D25JT0G4DKLH	01/10/13
1	COMPUTER- DESKTOP	1910900	D25JT0GZDKLH	01/10/13
1	COMPUTER- DESKTOP	1910915	D250G0DKLH	01/10/13
1	COMPUTER- DESKTOP	1910911	D25JT0ESDKLH	01/10/13
1	COMPUTER- DESKTOP	1910910	D25JT0FSDKLH	01/10/13
1	COMPUTER- DESKTOP	1910902	D25JT0GYDKLH	01/10/13
1	COMPUTER- DESKTOP	1910909	D25JT03MDKLH	01/10/13
1	COMPUTER- DESKTOP	1910891	D25JT044DKLH	01/10/13
1	COMPUTER- DESKTOP	1910893	D25JT08QDKLH	01/10/13
1	COMPUTER- DESKTOP	1910890	D25JT0HEDKLH	01/10/13
1	COMPUTER- DESKTOP	1910903	D25JT0FQDKLH	01/10/13
1	COMPUTER- DESKTOP	1910898	D25JT0J8DKLH	01/10/13
1	COMPUTER- DESKTOP	1910914	D25JT0EQDKLH	01/10/13
1	COMPUTER- DESKTOP	1910913	D25JT0GXDKLH	01/10/13
1	COMPUTER- DESKTOP	1910907	D25JT0G3DKLH	01/10/13
1	COMPUTER- DESKTOP	1910908	D25JT0JADKLH	01/10/13
1	COMPUTER- DESKTOP	1910885	D25JT0F5DKLH	01/10/13
1	COMPUTER- DESKTOP	1910912	D25JT0G5DKLH	01/10/13
1	COMPUTER- DESKTOP	1910894	D25JT0HVDKLH	01/10/13
1	COMPUTER- DESKTOP	1910884	D25JT0HMDKLH	01/10/13
1	COMPUTER- TABLET	1910135	DMPJWTRCDFHW	02/05/13
1	COMPUTER- TABLET	1910136	DMPJWUU9DFHW	02/05/13
1	COMPUTER- TABLET	1910138	DMPJWUZ3DFHW	02/05/13
1	COMPUTER- TABLET	1910139	DMPJWSVJDFHW	02/05/13
1	COMPUTER- TABLET	1910140	DMPJWUXGDFHW	02/05/13
1	COMPUTER- TABLET	1910141	DMPJWSLEDFHW	02/05/13
1	COMPUTER- TABLET	1910142	DMPJWV9QDFHW	02/05/13
1	COMPUTER- TABLET	1910143	DMPJWUMFDFHW	02/05/13
1	COMPUTER- TABLET	1910145	DMPJGVJGDKPH	02/05/13
1	COMPUTER- TABLET	1910146	DMPJGY4UDKPH	02/05/13
1	COMPUTER- TABLET	1910147	DMPJGWVBDKPH	02/05/13
1	COMPUTER- TABLET	1910148	DMPJGVSGDKPH	02/05/13
1	COMPUTER- TABLET	1910150	DMPJWUWDFDFHW	02/05/13
1	COMPUTER- TABLET	1910151	DMPJWTQ3DFHW	02/05/13

October 2021 Inventoried Surplus
Picked Up and Verified 09/14/2021 thru 10/18/2021

TOTAL ASSETS

1	COMPUTER- TABLET	1910152	DMPJWRWVDFHW	02/05/13
1	COMPUTER- TABLET	1910153	DMPJWSMDDDFHW	02/05/13
1	COMPUTER- TABLET	1910154	DMPJWUALDFHW	02/05/13
1	COMPUTER- TABLET	1910155	DMPJWUYKDFHW	02/05/13
1	COMPUTER- TABLET	1910156	DMPJWJT3DFHW	02/05/13
1	COMPUTER- TABLET	1910157	DMPJWULDDDFHW	02/05/13
1	COMPUTER- TABLET	1910159	DMPJGXZADKPH	02/05/13
1	COMPUTER- TABLET	1910160	DMPJWUNVDFHW	02/05/13
1	COMPUTER- TABLET	1910161	DMPJGXJRDKPH	02/05/13
1	COMPUTER- TABLET	1910162	DMPJGXXDKPH	02/05/13
1	COMPUTER- TABLET	1910164	DMPJGRM1DKPH	02/05/13
1	COMPUTER- TABLET	1920877	F5RK6661DFHW	02/27/13
1	COMPUTER- TABLET	1920884	F5RK65Q4DFHW	02/27/13
1	COMPUTER- TABLET	1912106	F5RK5L4BDFHW	03/19/13
1	COMPUTER- TABLET	1910311	DMPK9K0JF183	03/20/13
1	COMPUTER- TABLET	1912075	F5XKDC1ADDFHW	03/25/13
1	COMPUTER- TABLET	1912076	F5XKDKJVDFHW	03/25/13
1	COMPUTER- TABLET	1912077	F5XKD1HJDFHW	03/25/13
1	COMPUTER- TABLET	1912079	F5XKDJ2KDFHW	03/25/13
1	COMPUTER- TABLET	1912080	F5XKD1YVDFHW	03/25/13
1	COMPUTER- TABLET	1912081	F5XKD4YXDFHW	03/25/13
1	COMPUTER- TABLET	1912082	F5XKD9PCDFHW	03/25/13
1	COMPUTER- TABLET	1912083	F5XKD1C2DFHW	03/25/13
1	COMPUTER- TABLET	1912084	F5XKDFR9DFHW	03/25/13
1	COMPUTER- TABLET	1912085	F5XKDMVLDFHW	03/25/13
1	COMPUTER- TABLET	1912086	F5XKDLC8DFHW	03/25/13
1	COMPUTER- TABLET	1912087	F5XKDJTHDFHW	03/25/13
1	COMPUTER- TABLET	1912088	F5XKD44JDFHW	03/25/13
1	COMPUTER- TABLET	1912089	F5XKDNHPDFHW	03/25/13
1	COMPUTER- TABLET	1912090	F5XKDLAQDFHW	03/25/13
1	COMPUTER- TABLET	1912091	F5XKDKWVDFHW	03/25/13
1	COMPUTER- TABLET	1912092	F5XKD14GDFHW	03/25/13
1	COMPUTER- TABLET	1912093	F5XKD6WSDFHW	03/25/13
1	COMPUTER- TABLET	1912094	F5XKDJN9DFHW	03/25/13
1	COMPUTER- TABLET	1912095	F5XKDHWKDFHW	03/25/13
1	COMPUTER- TABLET	1912096	F5XKD7L9DFHW	03/25/13
1	COMPUTER- TABLET	1912097	F5XKDN65DFHW	03/25/13
1	COMPUTER- TABLET	1912098	F5XKDC19DFHW	03/25/13
1	COMPUTER- TABLET	1912099	F5XKDJRYDFHW	03/25/13
1	COMPUTER- TABLET	1912100	F5XKDPVNDFFHW	03/25/13
1	COMPUTER- TABLET	1912101	F5XKDLAHDFFHW	03/25/13
1	COMPUTER- TABLET	1912102	F5XKDMJ3DFHW	03/25/13
1	COMPUTER- TABLET	1912103	F5XKDSCTDFHW	03/25/13
1	COMPUTER- TABLET	1912104	F5XKDG8XDFHW	03/25/13
1	COMPUTER- TABLET	1912710	F5RKCLGHDFHW	05/16/13
1	COMPUTER- TABLET	1912751	F5XKFLF6DFHW	05/28/13
1	COMPUTER- TABLET	1912752	F5XKFL9ZDFHW	05/28/13
1	COMPUTER- TABLET	1912753	F5XKFF88DFHW	05/28/13
1	COMPUTER- TABLET	1912754	F5XKFRVGDFFHW	05/28/13
1	COMPUTER- TABLET	1912755	F5XKFQB3DFHW	05/28/13
1	COMPUTER- TABLET	1912756	F5XKFSZNDFFHW	05/28/13

October 2021 Inventoried Surplus
Picked Up and Verified 09/14/2021 thru 10/18/2021

TOTAL ASSETS

1	COMPUTER- TABLET	1912758	F5XKFV79DFHW	05/28/13
1	COMPUTER- TABLET	1912759	F5XKFPSKDFHW	05/28/13
1	COMPUTER- TABLET	1912760	F5XKFNHYDFHW	05/28/13
1	COMPUTER- TABLET	1912761	F5XKFT0PDFHW	05/28/13
1	COMPUTER- TABLET	1912763	F5XKFN41DFHW	05/28/13
1	COMPUTER- TABLET	1912765	F5XKFTVTDHFHW	05/28/13
1	COMPUTER- TABLET	1912766	F5XKFJP3DFHW	05/28/13
1	COMPUTER- TABLET	1912768	F5XKFZYXDFHW	05/28/13
1	COMPUTER- TABLET	1912770	F5XKFT0VDFHW	05/28/13
1	COMPUTER- TABLET	1910600	F5XKPG7SDFHW	05/30/13
1	COMPUTER- TABLET	1910668	F5XKPG1SDFHW	05/30/13
1	COMPUTER- TABLET	1910675	F5XKPFZHDFHW	05/30/13
1	COMPUTER- TABLET	1910536	DMRKPQFL182	05/30/13
1	COMPUTER- TABLET	1912771	F5RKFXPcdfHW	06/10/13
1	COMPUTER- TABLET	1912772	F5XKF3P0DFHW	06/10/13
1	COMPUTER- TABLET	1912773	F5XKF3V0DFHW	06/10/13
1	COMPUTER- TABLET	1912774	F5XKF586DFHW	06/10/13
1	COMPUTER- TABLET	1912775	F5XKF0APDFHW	06/10/13
1	COMPUTER- TABLET	1912776	F5RKFxQCdfHW	06/10/13
1	COMPUTER- TABLET	1912777	F5XKF55VDFHW	06/10/13
1	COMPUTER- TABLET	1912778	F5RKFPS9DFHW	06/10/13
1	COMPUTER- TABLET	1912779	F5XKFC0EDFHW	06/10/13
1	COMPUTER- TABLET	1912780	F5XKF0URDFHW	06/10/13
1	COMPUTER- TABLET	1912781	F5RKFUJ5DFHW	06/10/13
1	COMPUTER- TABLET	1912782	F5RKF6FDfHW	06/10/13
1	COMPUTER- TABLET	1912783	F5XKF1JJDFHW	06/10/13
1	COMPUTER- TABLET	1912784	F5XKF48FDfHW	06/10/13
1	COMPUTER- TABLET	1912785	F5XKF590DFHW	06/10/13
1	COMPUTER- TABLET	1912786	F5RKFZ81DFHW	06/10/13
1	COMPUTER- TABLET	1912787	F5XKF4R8DFHW	06/10/13
1	COMPUTER- TABLET	1912788	F5XKF01GDFHW	06/10/13
1	COMPUTER- TABLET	1912789	F5XKF565DFHW	06/10/13
1	COMPUTER- TABLET	1912790	F5XKF59MDFHW	06/10/13
1	COMPUTER- TABLET	1912791	F5XKF0AHDfHW	06/10/13
1	COMPUTER- TABLET	1912792	F5XKF8R8DFHW	06/10/13
1	COMPUTER- TABLET	1912793	F5XKF0LPDFHW	06/10/13
1	COMPUTER- TABLET	1912794	F5XKF90QDFHW	06/10/13
1	COMPUTER- TABLET	1912795	F5XKF694DFHW	06/10/13
1	COMPUTER- TABLET	1912796	F5XKFC5RDFHW	06/10/13
1	COMPUTER- TABLET	1912798	F5XKF01XDFHW	06/10/13
1	COMPUTER- TABLET	1912799	F5XKF5LPDFHW	06/10/13
1	COMPUTER- TABLET	1912156	F5RKL2UPDFHW	06/17/13
1	COMPUTER- TABLET	1912157	F5RKLfV4DFHW	06/17/13
1	COMPUTER- TABLET	1912158	F5RKLBTADfHW	06/17/13
1	COMPUTER- TABLET	1912159	F5RKLDT3DFHW	06/17/13
1	COMPUTER- TABLET	1912160	F5RKLf9TDfHW	06/17/13
1	COMPUTER- TABLET	1912161	F5RKLBNfDFHW	06/17/13
1	COMPUTER- TABLET	1912162	F5RKLf8PDFHW	06/17/13
1	COMPUTER- TABLET	1912163	F5RKLAAQDFHW	06/17/13
1	COMPUTER- TABLET	1912164	F5RKLfGEDfHW	06/17/13
1	COMPUTER- TABLET	1912165	F5RKLBLEDFHW	06/17/13

October 2021 Inventoried Surplus
Picked Up and Verified 09/14/2021 thru 10/18/2021

TOTAL ASSETS

1	COMPUTER- TABLET	1912166	F5RKL9BDFHW	06/17/13
1	COMPUTER- TABLET	1912167	F5RKL49DFHW	06/17/13
1	COMPUTER- TABLET	1912168	F5RKLBPQDFHW	06/17/13
1	COMPUTER- TABLET	1912169	F5RKL6MDFHW	06/17/13
1	COMPUTER- TABLET	1912170	F5RKL8QDFHW	06/17/13
1	COMPUTER- TABLET	1912171	F5YK721DFHW	06/17/13
1	COMPUTER- TABLET	1912173	F5RKL5TQDFHW	06/17/13
1	COMPUTER- TABLET	1912174	F5RKLBMDFHW	06/17/13
1	COMPUTER- TABLET	1912175	F5RKLDPGDFHW	06/17/13
1	COMPUTER- TABLET	1912176	F5RKLHCFDFHW	06/17/13
1	COMPUTER- TABLET	1912177	F5RKL7ECDFHW	06/17/13
1	COMPUTER- TABLET	1912179	F5RKL82VDFHW	06/17/13
1	COMPUTER- TABLET	1912180	F5RKL9ADDFHW	06/17/13
1	COMPUTER- TABLET	1912181	F5RKL8DBDFHW	06/17/13
1	COMPUTER- TABLET	1912182	F5RKL8BDFHW	06/17/13
1	COMPUTER- TABLET	1912183	F5RKL5GLDFHW	06/17/13
1	COMPUTER- TABLET	1912184	F5RKL5TWDFHW	06/17/13
1	COMPUTER- TABLET	1912185	F5RKL5RSDFW	06/17/13
1	COMPUTER- TABLET	1913871	F5XK53XRDKPH	06/20/13
1	COMPUTER- TABLET	1913874	F5XK50QUDKPH	06/20/13
1	COMPUTER- TABLET	1913876	F5XK532VDKPH	06/20/13
1	COMPUTER- TABLET	1913844	F5RKMN87DFHW	06/26/13
1	COMPUTER- TABLET	1913845	F5RKMMPQDFHW	06/26/13
1	COMPUTER- TABLET	1913846	F5RKMQBDFHW	06/26/13
1	COMPUTER- TABLET	1913847	F5RKM6SDFHW	06/26/13
1	COMPUTER- TABLET	1913849	F5RKM7UDFW	06/26/13
1	COMPUTER- TABLET	1913854	F5XK30LGDKPH	06/26/13
1	COMPUTER- TABLET	1913856	F5XK56FJDKPH	06/26/13
1	COMPUTER- TABLET	1913857	F5XK30XWDKPH	06/26/13
1	COMPUTER- TABLET	1913860	F5XK3103DKPH	06/26/13
1	COMPUTER- TABLET	1913862	F5XK39PTDKPH	06/26/13
1	COMPUTER- TABLET	1913864	F5RKH8BKDKPH	06/26/13
1	COMPUTER- TABLET	1913866	F5RKH8G3DKPH	06/26/13
1	COMPUTER- TABLET	1912237	F5XL22X5DFHW	07/30/13
1	COMPUTER- TABLET	1912240	F5XL23AYDFHW	07/30/13
1	COMPUTER- TABLET	1912309	DKVL611FDFHW	08/22/13
1	COMPUTER- TABLET	1912347	F5RL16U9DFHW	08/22/13
1	COMPUTER- TABLET	1912353	F5RL16UBDFHW	08/22/13
1	COMPUTER- TABLET	1912354	F5RL172XDDFW	08/22/13
1	COMPUTER- TABLET	1914863	DYTKN1V7DKPH	08/27/13
1	COMPUTER- TABLET	1914860	DYTKN3N7DKPH	08/27/13
1	COMPUTER- TABLET	1914855	DYTKN3PTDKPH	08/27/13
1	COMPUTER- TABLET	1914856	DYTKN3QGDKPH	08/27/13
1	COMPUTER- TABLET	1914898	F5RKWGS3DKPH	08/29/13
1	COMPUTER- TABLET	1914894	F5RKN1E0DKPH	08/29/13
1	COMPUTER- TABLET	1914895	F5RKN6M9DKPH	08/29/13
1	COMPUTER- TABLET	1914896	F5RKN8W4DKPH	08/29/13
1	COMPUTER- TABLET	1914897	F5RKN8WHDKPH	08/29/13
1	COMPUTER- TABLET	1914492	F5XKXCBTDFHW	08/29/13
1	COMPUTER- TABLET	1916354	DYTKN702DFHW	10/24/13
1	COMPUTER- TABLET	1916364	DYTKN1E9DFHW	10/24/13

October 2021 Inventoried Surplus
Picked Up and Verified 09/14/2021 thru 10/18/2021

TOTAL ASSETS

1	COMPUTER- TABLET	1916311	F5RL1CVVDFHW	10/28/13
1	COMPUTER- TABLET	1916518	DYTKL01DFHW	10/28/13
1	COMPUTER- TABLET	1916519	DYTKLMKXDFHW	10/28/13
1	COMPUTER- TABLET	1916521	DYTKLP5EDFHW	10/28/13
1	COMPUTER- TABLET	1916523	DYTKLL8ADFHW	10/28/13
1	COMPUTER- TABLET	1916524	DYTKLN2DDFHW	10/28/13
1	COMPUTER- TABLET	1916525	DYTKLP4MDFHW	10/28/13
1	COMPUTER- TABLET	1916527	DYTKLMK2DFHW	10/28/13
1	COMPUTER- TABLET	1916528	DYTKLQA5DFHW	10/28/13
1	COMPUTER- TABLET	1916531	DYTKLQLQDFHW	10/28/13
1	COMPUTER- TABLET	1916537	DYTKLQ4BDFHW	10/28/13
1	COMPUTER- TABLET	1916547	DYTKRNYLDFHW	10/28/13
1	COMPUTER- TABLET	1916224	DMPLPALCFK11	12/04/13
1	COMPUTER- TABLET	1916227	DMPLPDFTFK11	12/04/13
1	COMPUTER- TABLET	1916232	DMPLPEBRFK11	12/04/13
1	COMPUTER- TABLET	1918063	DKWLJ0RXF182	12/10/13
1	COMPUTER- TABLET	1918064	DKWLJ0N7F182	12/10/13
1	COMPUTER- TABLET	1917133	DYVKQ3U4DFHW	01/28/14
1	COMPUTER- TABLET	1917135	DYVKQ34LDFHW	01/28/14
1	COMPUTER- TABLET	1917136	DYVKQ3CNDFFHW	01/28/14
1	COMPUTER- TABLET	1917137	DYVKQ22KDFHW	01/28/14
1	COMPUTER- TABLET	1917138	DYVKQ1MUDFHW	01/28/14
1	COMPUTER- TABLET	1917139	DYVKQ4YPDFHW	01/28/14
1	COMPUTER- TABLET	1917140	DYVKQ25HDFHW	01/28/14
1	COMPUTER- TABLET	1917141	DYVKQ2U4DFHW	01/28/14
1	COMPUTER- TABLET	1917142	DYVKQ2YKDFHW	01/28/14
1	COMPUTER- TABLET	1917144	DYVKQ9U5DFHW	01/28/14
1	COMPUTER- TABLET	1917145	DYVKQ2XADFHW	01/28/14
1	COMPUTER- TABLET	1917146	DYVKQ4G6DFHW	01/28/14
1	COMPUTER- TABLET	1917147	DYVKQ3F4DFHW	01/28/14
1	COMPUTER- TABLET	1917148	DYVKQ7D4DFHW	01/28/14
1	COMPUTER- TABLET	1917149	DYTKQSG1DFHW	01/28/14
1	COMPUTER- TABLET	1917150	DYVKQ1BYDFHW	01/28/14
1	COMPUTER- TABLET	1917151	DYTKQWE5DFHW	01/28/14
1	COMPUTER- TABLET	1917152	DYVKQ2ZZDFHW	01/28/14
1	COMPUTER- TABLET	1917032	DYTKPM6QDFHW	02/04/14
1	COMPUTER- TABLET	1917034	DYVKNOT1DFHW	02/04/14
1	COMPUTER- TABLET	1917035	DYTKPNVPDFHW	02/04/14
1	COMPUTER- TABLET	1917036	DYTKQ3PCDFHW	02/04/14
1	COMPUTER- TABLET	1917037	DYTKQ6BSDFHW	02/04/14
1	COMPUTER- TABLET	1917039	DYTKQ36YDFHW	02/04/14
1	COMPUTER- TABLET	1917040	DYTKQ17CDFHW	02/04/14
1	COMPUTER- TABLET	1917041	DYTKPNTDFHW	02/04/14
1	COMPUTER- TABLET	1917043	DYTKPNT1DFHW	02/04/14
1	COMPUTER- TABLET	1917045	DYTKQ2GSDFHW	02/04/14
1	COMPUTER- TABLET	1917050	DYTKQ18UDFHW	02/04/14
1	COMPUTER- TABLET	1917053	DYVKNOVLDFFHW	02/04/14
1	COMPUTER- TABLET	1917056	DYTKQ3LXDFHW	02/04/14
1	COMPUTER- TABLET	1917615	DYTLXVHEDFFHW	02/26/14
1	COMPUTER- TABLET	1915806	DYTLNP6QDKPH	03/24/14
1	COMPUTER- TABLET	1915772	DMQKJATYF185	03/24/14

October 2021 Inventoried Surplus
Picked Up and Verified 09/14/2021 thru 10/18/2021

TOTAL ASSETS

1	COMPUTER- TABLET	1915773	DMQKJ9FTF185	03/24/14
1	COMPUTER- TABLET	1915774	DMPKHNPFF185	03/24/14
1	COMPUTER- TABLET	1915775	DMQKJBFPF185	03/24/14
1	COMPUTER- TABLET	1915776	DMQKJB6LF185	03/24/14
1	COMPUTER- TABLET	1915777	DMQKR6RYF182	03/24/14
1	COMPUTER- TABLET	1917675	DMPMG4BSFK12	04/14/14
1	COMPUTER- TABLET	1918418	F5RKRHSLDFHW	04/18/14
1	COMPUTER- TABLET	1918421	F5RKRHUWDFHW	04/18/14
1	COMPUTER- TABLET	1919158	DMPMMWJ4F182	05/21/14
1	COMPUTER- TABLET	1919540	DMQMNEYHF182	05/21/14
1	COMPUTER- TABLET	1919314	DMQMKNKZDFK10	05/29/14
1	COMPUTER- TABLET	1919320	DMQMKNKXTFK10	05/29/14
1	COMPUTER- TABLET	1918882	DKVML04WDJ8R	06/10/14
1	COMPUTER- TABLET	1920345	DMPMTCTSF182	06/11/14
1	COMPUTER- TABLET	1920346	DMPMTRWPF182	06/11/14
1	COMPUTER- TABLET	1920348	DMPMT596F182	06/11/14
1	COMPUTER- TABLET	1920355	DMPMT4NXF182	06/11/14
1	COMPUTER- TABLET	1920360	DMPMTCQVF182	06/11/14
1	COMPUTER- TABLET	1920377	F7NMV4WRFP84	06/11/14
1	COMPUTER- TABLET	1920379	F7NMV5YYFP84	06/11/14
1	COMPUTER- TABLET	1920380	F7NMV74VFP84	06/11/14
1	COMPUTER- TABLET	1920381	F7NMV52MFP84	06/11/14
1	COMPUTER- TABLET	1920382	F7PMT8VPFP84	06/11/14
1	COMPUTER- TABLET	1920383	F7NMV6PTFP84	06/11/14
1	COMPUTER- TABLET	1920384	F7NMV6ZPFP84	06/11/14
1	COMPUTER- TABLET	1920385	F7NMV74RFP84	06/11/14
1	COMPUTER- TABLET	1920386	F7PMT8U8FP84	06/11/14
1	COMPUTER- TABLET	1920387	F7NMV7AQFP84	06/11/14
1	COMPUTER- TABLET	1920388	F7NMV5YUFP84	06/11/14
1	COMPUTER- TABLET	1920389	F7NMV5XBFP84	06/11/14
1	COMPUTER- TABLET	1920395	F7PMT73VFP84	06/11/14
1	COMPUTER- TABLET	1920396	F7NMV4WLFP84	06/11/14
1	COMPUTER- TABLET	1920397	F7PMT68YFP84	06/11/14
1	COMPUTER- TABLET	1920398	F7PMT66FFP84	06/11/14
1	COMPUTER- TABLET	1920399	F7PMT5ZHFP84	06/11/14
1	COMPUTER- TABLET	1920401	F7PMT5LVFP84	06/11/14
1	COMPUTER- TABLET	1920402	F7PMT60KFP84	06/11/14
1	COMPUTER- TABLET	1920403	F7PMT6BCFP84	06/11/14
1	COMPUTER- TABLET	1920404	F7PMT64AFP84	06/11/14
1	COMPUTER- TABLET	1920405	F7PMT6CGFP84	06/11/14
1	COMPUTER- TABLET	1920406	F7PMT6867FP84	06/11/14
1	COMPUTER- TABLET	1920410	F4KMPBGZFCM5	06/16/14
1	COMPUTER- TABLET	1920421	F4KMPBTLFCM5	06/16/14
1	COMPUTER- TABLET	1929482	DMQMPG9XF182	06/30/14
1	COMPUTER- DESKTOP	1928597	C02MP56JF8J2	08/14/14
1	COMPUTER- TABLET	1928737	DMQN67HRF182	08/22/14
1	COMPUTER- TABLET	1928472	DMPN4D47F182	08/27/14
1	COMPUTER- TABLET	1920785	DMPN5MXJFK10	09/08/14
1	COMPUTER- TABLET	1929117	DMRNC49VF182	09/23/14
1	COMPUTER- TABLET	1929191	DMPNFDVGF182	09/25/14
1	COMPUTER- TABLET	1929469	DMPMP3SGFK10	10/15/14

October 2021 Inventoried Surplus
Picked Up and Verified 09/14/2021 thru 10/18/2021

TOTAL ASSETS

1	COMPUTER- TABLET	1929472	DMPMP2CTFK10	10/15/14
1	COMPUTER- TABLET	1929475	DMPMP1V2FK10	10/15/14
1	COMPUTER- TABLET	1929532	F9GNFJ0TFP84	10/17/14
1	COMPUTER- TABLET	1931902	DMPNC2M9FK11	11/18/14
1	COMPUTER- TABLET	1930783	DMPMXWRMFK11	12/03/14
1	COMPUTER- TABLET	1930786	DMPMVWBFFK11	12/03/14
1	COMPUTER- TABLET	1931963	DMPN101CFK11	12/16/14
1	COMPUTER- TABLET	1931694	DMPN8HVDFK11	01/08/15
1	COMPUTER- TABLET	1932138	DMPN744FFK11	01/08/15
1	COMPUTER- TABLET	1932883	DLXNQHW7FCM5	01/08/15
1	COMPUTER- TABLET	1932901	DLXNQD6ZFCM5	01/08/15
1	COMPUTER- TABLET	1934305	DMPN7BK4FK11	01/16/15
1	COMPUTER- TABLET	1935102	DMPP6SCZFK11	03/16/15
1	COMPUTER- TABLET	1935117	DMQP65X6FK10	03/16/15
1	COMPUTER- TABLET	1935116	DMQP6RZXFK10	03/16/15
1	COMPUTER- TABLET	1937433	DMPPGEZDFK11	05/04/15
1	COMPUTER- TABLET	1938396	DMPPL095FK11	05/19/15
1	COMPUTER- DESKTOP	1938524	C02PF7XEF8J2	05/27/15
1	COMPUTER-TEACHER LAPTOP	1939597	C1MP1CACDXY3	06/30/15
1	COMPUTER-TEACHER LAPTOP	1939600	C1MP193QDXY3	06/30/15
1	COMPUTER-TEACHER LAPTOP	1939699	C1MP661NDXY3	06/30/15
1	COMPUTER- TABLET	1943351	DMQNRZMFP84	07/24/15
1	COMPUTER- TABLET	1943352	DMPNT665FP84	07/24/15
1	COMPUTER- TABLET	1943353	DMQNR8MJFP84	07/24/15
1	COMPUTER- TABLET	1943354	DMPNT5R8FP84	07/24/15
1	COMPUTER- TABLET	1943355	DMPNT6JLFP84	07/24/15
1	COMPUTER- TABLET	1943356	DMPNT5U6FP84	07/24/15
1	COMPUTER- TABLET	1943358	DMPNR62MFP84	07/24/15
1	COMPUTER- TABLET	1943361	DMQNR9LPFP84	07/24/15
1	COMPUTER- TABLET	1943362	DMQNR9THFP84	07/24/15
1	COMPUTER- TABLET	1943363	DMPNT2X5FP84	07/24/15
1	COMPUTER- TABLET	1943364	DMPNT6PLFP84	07/24/15
1	COMPUTER- TABLET	1943365	DMPNT63QFP84	07/24/15
1	COMPUTER- TABLET	1943366	DMQNR9MAFP84	07/24/15
1	COMPUTER- TABLET	1943367	DMQNRH1BFP84	07/24/15
1	COMPUTER- TABLET	1943369	DMQNRVVF84	07/24/15
1	COMPUTER- TABLET	1943370	DMPNT1FHFP84	07/24/15
1	COMPUTER- TABLET	1943372	DMPNRMS0FP84	07/24/15
1	COMPUTER- TABLET	1943376	DMPNRPANFP84	07/24/15
1	COMPUTER- TABLET	1943379	DMPNTNA2FP84	07/24/15
1	COMPUTER- TABLET	1943380	DMPNRMQHFP84	07/24/15
1	COMPUTER- TABLET	1943448	F9FPWFMMFCM5	07/28/15
1	COMPUTER- TABLET	1943451	F9FPWGZJFCM5	07/28/15
1	COMPUTER- DESKTOP	1944155	D25Q6130F8J9	08/27/15
1	COMPUTER- TABLET	1945595	DMPQG3FQFK11	12/17/15
1	COMPUTER- TABLET	1947569	DMPRHXT8G5VJ	04/18/16
1	COMPUTER- DESKTOP	1948145	D25RQ0XYGQ17	06/08/16
1	COMPUTER- TABLET	1949165	DMPRTE7DG5VW	06/30/16
1	COMPUTER- TABLET	1950531	DMQS3WD8G5VW	09/07/16
1	COMPUTER- TABLET	1950888	F9GS411RFCM6	12/14/16
1	COMPUTER- TABLET	1950891	F9FS5BPYFCM6	12/14/16

October 2021 Inventoried Surplus
Picked Up and Verified 09/14/2021 thru 10/18/2021

TOTAL ASSETS

1	COMPUTER- TABLET	1951546	DMPSCRXG5W1	12/15/16
1	COMPUTER- TABLET	1951365	DKWN703PDNQV	01/03/17
1	COMPUTER- TABLET	1951366	DKWN703LDNQV	01/03/17
1	COMPUTER- TABLET	1951587	DMPSHJ53G5W1	01/05/17
1	COMPUTER- TABLET	1951609	DMPSHJ64G5W1	01/05/17
1	COMPUTER- TABLET	1952186	DMPT47QAG5W1	02/03/17
1	COMPUTER- TABLET	1954240	DMPT98PBHG5F	04/21/17
1	COMPUTER- TABLET	1954367	F9FTJJNZGHKJ	05/11/17
1	COMPUTER- TABLET	1957469	F9GV919WHLFD	10/12/17
1	COMPUTER- TABLET	1959243	GG7W412PHLFD	02/14/18
1	COMPUTER- TABLET	1958391	DMQVKT9KHLF9	03/15/18
1	COMPUTER- TABLET	1963938	DMQXX7FMJF8J	01/28/19
1	COMPUTER- TABLET	1962248	F9FXT7SDGHKJ	02/14/19
1	COMPUTER- TABLET	1962265	F9FXVB76GHKJ	02/14/19
1	COMPUTER- TABLET	1965267	DMQXV6F3JF8J	02/19/19
1	COMPUTER- TABLET	1965785	DMPXWZ0EJF8J	04/10/19
1	COMPUTER- TABLET	1965827	DMQXW37QJF8J	04/10/19
1	COMPUTER- TABLET	1965829	DMQXWB68JF8J	04/10/19
1	COMPUTER- TABLET	1968513	DMPYPATXJF8M	09/05/19
1	COMPUTER- TABLET	1908672	GG7Z1PUAJF8J	09/09/19
1	COMPUTER- TABLET	1969646	F9FZGGYQGMF3M	10/12/19
1	PROJECTOR- VIDEO	1909955	PDP3D01883000	06/12/13
1	PROJECTOR- VIDEO	1921659	PDA1E01705000	03/11/14
1	PROJECTOR- VIDEO - REFRESH	1923454	PDL4E03589000	07/21/14
1	PROJECTOR- VIDEO - REFRESH	1968228	PDP3F0027901L	06/22/15
1	PROJECTOR- VIDEO	1947127	PDR1F0025501L	01/13/16
1	PROJECTOR- VIDEO	1922889	PD3BE02453000	02/26/16
1	PROJECTOR- VIDEO	1945795	PDB7F03855000	02/26/16
1	PROJECTOR- VIDEO	1947928	PDT6F0178601L	03/01/16
1	PROJECTOR- VIDEO	1947304	PDB3F02188000	03/07/16
1	PROJECTOR- VIDEO	1945799	PD29D01674000	03/14/16
1	PROJECTOR- VIDEO	1946616	PDB2E03147000	03/14/16
1	PROJECTOR- VIDEO	1949560	PDP3F0001101L	03/30/16
1	PROJECTOR- VIDEO	1948914	PDMCF0054901L	03/30/16
1	PROJECTOR- VIDEO	1949564	PDMCF0054401L	03/30/16
1	PROJECTOR- VIDEO	1948905	PDP3F0001201L	03/30/16
1	PROJECTOR- VIDEO	1954523	PDW3E03663000	03/30/16
1	PROJECTOR- VIDEO	1948900	PDN4D05367000	03/30/16
1	PROJECTOR- VIDEO	1949559	PDBBE03367000	03/30/16
1	PROJECTOR- VIDEO	1949569	PDN1G0062901L	03/30/16
1	PROJECTOR- VIDEO	1947902	PDD2F0023801L	04/27/16
1	PROJECTOR- VIDEO	1961612	PDD6D01001000	04/27/16
1	PROJECTOR- VIDEO	1947457	PDP3F0001601L	04/27/16
1	PROJECTOR- VIDEO	1947456	PD42F01253000	04/27/16
1	PROJECTOR- VIDEO	1947654	PDMCF0053301L	05/19/16
1	PROJECTOR- VIDEO	1947655	PDMCF0051401L	05/19/16
1	PROJECTOR- VIDEO	1947656	PDMCF0053701L	05/19/16
1	PROJECTOR- VIDEO	1947772	PD88F02515000	05/31/16
1	PROJECTOR- VIDEO	1948250	PDN7F0004301L	06/15/16
1	PROJECTOR- VIDEO	1948184	PDD2F0024801L	06/16/16
1	PROJECTOR- VIDEO	1948798	PDW1E01018000	06/16/16

October 2021 Inventoried Surplus
Picked Up and Verified 09/14/2021 thru 10/18/2021

TOTAL ASSETS

1	PROJECTOR- VIDEO	1948249	PDL2E01181000	06/23/16
1	PROJECTOR- VIDEO	1948803	PDD6F03415000	06/23/16
1	PROJECTOR- VIDEO	1948804	PDP3F0025101L	06/23/16
1	PROJECTOR- VIDEO	1949573	PDDCD02141000	08/02/16
1	PROJECTOR- VIDEO	1948910	PDW3D01931000	08/03/16
1	PROJECTOR- VIDEO	1948917	PDP3F0002101L	08/03/16
1	PROJECTOR- VIDEO	1950723	PDPBD01394000	09/20/16
1	PROJECTOR- VIDEO	1959954	PDE1D02364000	01/05/17
1	PROJECTOR- VIDEO	1954705	PD27D03401000	01/31/17
1	PROJECTOR- VIDEO	1954180	PDR5D01352000	01/31/17
1	PROJECTOR- VIDEO	1906498		01/31/17
1	PROJECTOR- VIDEO	1952150	PDBBE03352000	01/31/17
1	PROJECTOR- VIDEO	1954151	PD51D01112000	02/01/17
1	PROJECTOR- VIDEO	1951939	PD51D01080000	02/01/17
1	PROJECTOR- VIDEO	1951941	PDN3E01282000	02/02/17
1	PROJECTOR- VIDEO	1954530	PDV4D03953000	02/02/17
1	PROJECTOR- VIDEO	1952149	PDA1E01712000	02/02/17
1	PROJECTOR- VIDEO	1949563	PDMCF0054701L	03/21/17
1	PROJECTOR- VIDEO	1954173	PD67D01342000	03/24/17
1	PROJECTOR- VIDEO	1954181	PD16D02435000	03/24/17
1	PROJECTOR- VIDEO	1952730	PDE1D02009000	03/24/17
1	PROJECTOR- VIDEO	1960107	PD8BD01053000	03/24/17
1	PROJECTOR- VIDEO	1952727	PD3BE02469000	03/24/17
1	PROJECTOR- VIDEO	1952701	PDW3E03446000	03/24/17
1	PROJECTOR- VIDEO	1960114	PDV5D04144000	03/24/17
1	PROJECTOR- VIDEO	1952711	PD8BD01184000	03/24/17
1	PROJECTOR- VIDEO	1952670	PDE8D03177000	03/24/17
1	PROJECTOR- VIDEO	1924823	PD8BD01168000	03/24/17
1	PROJECTOR- VIDEO	1958793	PD8BD01163000	04/26/17
1	PROJECTOR- VIDEO	1924834	PD8BD01194000	04/26/17
1	PROJECTOR- VIDEO	1924821	PD8BD01069000	04/26/17
1	PROJECTOR- VIDEO	1952728	PDF4D01047000	05/15/17
1	PROJECTOR- VIDEO	1955333	PDJ5C02303000	05/15/17
1	PROJECTOR- VIDEO	1960159	PD3CC02877000	05/26/17
1	PROJECTOR- VIDEO	1960282	PD74E01158000	05/26/17
1	PROJECTOR- VIDEO	1955388	PDP3D01818000	05/26/17
1	PROJECTOR- VIDEO	1956539	PDA1E01686000	07/31/17
1	PROJECTOR- VIDEO	1958137	PD3CC02289000	07/31/17
1	PROJECTOR- VIDEO	1956482	PD72D03214000	07/31/17
1	PROJECTOR- VIDEO	1960345	PDBBG0014101L	07/31/17
1	PROJECTOR- VIDEO	1960332	PK4D02539000	07/31/17
1	PROJECTOR- VIDEO	1955565	PDD2F0023101L	08/29/17
1	PROJECTOR- VIDEO	1955570	PDD2F0023901L	08/29/17
1	PROJECTOR- VIDEO	1955572	PDD2F0022101L	08/29/17
1	PROJECTOR- VIDEO	1955575	PDN7F0026501L	08/29/17
1	PROJECTOR- VIDEO	1956401	PDD2F0022701L	08/30/17
1	PROJECTOR- VIDEO	1956402	PDN7F0026401L	08/30/17
1	PROJECTOR- VIDEO	1956403	PDR1F0043501L	08/30/17
1	PROJECTOR- VIDEO	1956405	PDN7F0025901L	08/30/17
1	PROJECTOR- VIDEO	1956408	PDMCF0051301L	08/30/17
1	PROJECTOR- VIDEO	1956547		10/17/17

October 2021 Inventoried Surplus
Picked Up and Verified 09/14/2021 thru 10/18/2021

TOTAL ASSETS

1	PROJECTOR- VIDEO	1956548	PD3CC02228000	10/17/17
1	PROJECTOR- VIDEO	1956549	PD3CC02855000	10/17/17
1	PROJECTOR- VIDEO	1956552	PD3CC02G13000	10/17/17
1	PROJECTOR- VIDEO	1956553	PDD2F0034201L	10/17/17
1	PROJECTOR- VIDEO	1956554	PD3CC02554000	10/17/17
1	PROJECTOR- VIDEO	1956555	PD51D01097000	10/17/17
1	PROJECTOR- VIDEO	1959950	PDW2C02730000	10/17/17
1	PROJECTOR- VIDEO	1960429	PDK4D02535000	11/13/17
1	PROJECTOR- VIDEO	1957136	PDE1D02267000	11/13/17
1	PROJECTOR- VIDEO - REFRESH	1958506	PDPCD02181000	01/11/18
1	PROJECTOR- VIDEO	1957124	PD42F03099000	02/06/18
1	PROJECTOR- VIDEO	1959446	PD8CD01116000	03/09/18
1	1350-TECHNOLOGY SERVICES	1601618	8D2ZC01	06/01/01
1	1350-TECHNOLOGY SERVICES	1663223	3P9XG41	03/30/04
1	COMPUTER- DESKTOP	1824879	43XVDC1	02/15/07
1	COMPUTER- DESKTOP	1818433	6PDMKC1	03/08/07
1	COMPUTER- DESKTOP	1834745	HWY85D1	07/26/07
1	COMPUTER- DESKTOP	1837651	3BSV6D1	08/27/07
1	COMPUTER- LAPTOP	CQHXF1	CQHXF1	10/09/07
1	COMPUTER- DESKTOP	1844686	95MDJD1	11/07/07
1	COMPUTER- DESKTOP	1842092	BXSFD1	11/07/07
1	COMPUTER- DESKTOP	1866093	JMHV7G1	06/26/08
1	COMPUTER- LAPTOP	1867496	1NMZLG1	08/06/08
1	COMPUTER- LAPTOP	1867502	8NMZLG1	08/06/08
1	COMPUTER- LAPTOP	1867493	CNMZLG1	08/06/08
1	COMPUTER- LAPTOP	1871020	9M9MJH1	10/22/08
1	COMPUTER- LAPTOP	1870061	3FPPQH1	12/09/08
1	COMPUTER- LAPTOP	1870030	5FPPQH1	12/09/08
1	COMPUTER- LAPTOP	1870044	CDPPQH1	12/09/08
1	COMPUTER- LAPTOP	1874045	2WZGKC1	02/25/09
1	COMPUTER- LAPTOP	1874328	5T1LMJ1	04/15/09
1	COMPUTER- DESKTOP	1870344	6SCM4J1	06/08/09
1	COMPUTER- DESKTOP	1881918	FYKWCK1	08/19/09
1	COMPUTER- DESKTOP	1881271	3ZMCDK1	10/16/09
1	COMPUTER- DESKTOP	1882045	3YQDDK1	10/20/09
1	COMPUTER- DESKTOP	1882628	BGHTDK1	11/13/09
1	COMPUTER- LAPTOP	1890201	4VW6VL1	01/27/10
1	COMPUTER- LAPTOP	1892481	18LZTM1	08/20/10
1	COMPUTER- LAPTOP	1892338	1H5LQM1	08/27/10
1	COMPUTER- DESKTOP	1896184	8569QN1	03/01/11
1	COMPUTER- DESKTOP	1896187	85BBQN1	03/01/11
1	COMPUTER-SERVER	1899620	965KFP1	03/09/11
1	COMPUTER-TEACHER LAPTOP	1N7QKQ1	1N7QKQ1	06/02/11
1	COMPUTER-TEACHER LAPTOP	1NNPKQ1	1NNPKQ1	06/02/11
1	COMPUTER-TEACHER LAPTOP	1NNYKQ1	1NNYKQ1	06/02/11
1	COMPUTER-TEACHER LAPTOP	1KTKKQ1	1KTKKQ1	06/02/11
1	COMPUTER- LAPTOP	2KK50Q1	2KK50Q1	06/03/11
1	COMPUTER- LAPTOP	4PJ50Q1	4PJ50Q1	06/03/11
1	COMPUTER-TEACHER LAPTOP	14YPKQ1	14YPKQ1	06/03/11
1	COMPUTER-TEACHER LAPTOP	14MSKQ1	14MSKQ1	06/06/11
1	COMPUTER-TEACHER LAPTOP	19LXKQ1	19LXKQ1	06/06/11

October 2021 Inventoried Surplus
Picked Up and Verified 09/14/2021 thru 10/18/2021

TOTAL ASSETS

1	COMPUTER-TEACHER LAPTOP	1KYKKQ1	1KYKKQ1	06/06/11
1	COMPUTER-TEACHER LAPTOP	17JXKQ1	17JXKQ1	06/08/11
1	COMPUTER-TEACHER LAPTOP	19DVKQ1	19DVKQ1	06/08/11
1	COMPUTER-TEACHER LAPTOP	17JRKQ1	17JRKQ1	06/08/11
1	COMPUTER-TEACHER LAPTOP	2TNZKQ1	2TNZKQ1	06/08/11
1	COMPUTER-TEACHER LAPTOP	1MQPKQ1	1MQPKQ1	06/09/11
1	COMPUTER-TEACHER LAPTOP	1NZOLQ1	1NZOLQ1	06/09/11
1	COMPUTER-TEACHER LAPTOP	1P0PKQ1	1P0PKQ1	06/13/11
1	COMPUTER-TEACHER LAPTOP	1HM0LQ1	1HM0LQ1	06/13/11
1	COMPUTER-TEACHER LAPTOP	1N4LKQ1	1N4LKQ1	06/13/11
1	COMPUTER-TEACHER LAPTOP	178SKQ1	178SKQ1	06/13/11
1	COMPUTER-TEACHER LAPTOP	1760LQ1	1760LQ1	06/13/11
1	COMPUTER-TEACHER LAPTOP	1771LQ1	1771LQ1	06/13/11
1	COMPUTER-TEACHER LAPTOP	1KLPKQ1	1KLPKQ1	06/14/11
1	COMPUTER-TEACHER LAPTOP	3161LQ1	3161LQ1	06/15/11
1	COMPUTER-TEACHER LAPTOP	300SKQ1	300SKQ1	06/15/11
1	COMPUTER-TEACHER LAPTOP	2RZNKQ1	2RZNKQ1	06/20/11
1	COMPUTER-TEACHER LAPTOP	3191LQ1	3191LQ1	06/21/11
1	COMPUTER-TEACHER LAPTOP	2ZWKKQ1	2ZWKKQ1	06/21/11
1	COMPUTER- LAPTOP	H2CK0Q1	H2CK0Q1	06/22/11
1	COMPUTER-TEACHER LAPTOP	30RVKQ1	30RVKQ1	06/22/11
1	COMPUTER-TEACHER LAPTOP	30RKKQ1	30RKKQ1	06/22/11
1	COMPUTER-TEACHER LAPTOP	2ZNWKQ1	2ZNWKQ1	06/22/11
1	COMPUTER-TEACHER LAPTOP	30RRKQ1	30RRKQ1	06/22/11
1	COMPUTER-TEACHER LAPTOP	2SXSQ1	2SXSQ1	06/27/11
1	COMPUTER-TEACHER LAPTOP	2S3MKQ1	2S3MKQ1	06/27/11
1	COMPUTER-TEACHER LAPTOP	1899561	6WVKLQ1	06/27/11
1	COMPUTER-TEACHER LAPTOP	2CW0LQ1	2CW0LQ1	07/08/11
1	COMPUTER-TEACHER LAPTOP	1L9XKQ1	1L9XKQ1	07/11/11
1	COMPUTER-TEACHER LAPTOP	1LK1LQ1	1LK1LQ1	07/11/11
1	COMPUTER-TEACHER LAPTOP	1M1YKQ1	1M1YKQ1	07/11/11
1	COMPUTER-TEACHER LAPTOP	1Q3ZKQ1	1Q3ZKQ1	07/12/11
1	COMPUTER-TEACHER LAPTOP	2D8SKQ1	2D8SKQ1	07/18/11
1	COMPUTER-TEACHER LAPTOP	1LZWKQ1	1LZWKQ1	07/18/11
1	COMPUTER-TEACHER LAPTOP	1JBXKQ1	1JBXKQ1	07/18/11
1	COMPUTER-TEACHER LAPTOP	70RKKQ1	70RKKQ1	07/18/11
1	COMPUTER-TEACHER LAPTOP	1L1YKQ1	1L1YKQ1	07/18/11
1	COMPUTER-TEACHER LAPTOP	70DQKQ1	70DQKQ1	07/18/11
1	COMPUTER-TEACHER LAPTOP	70D0LQ1	70D0LQ1	07/18/11
1	COMPUTER-TEACHER LAPTOP	1M1VKQ1	1M1VKQ1	07/18/11
1	COMPUTER-TEACHER LAPTOP	2ZMSKQ1	2ZMSKQ1	07/25/11
1	COMPUTER-TEACHER LAPTOP	1KMQKQ1	1KMQKQ1	07/27/11
1	COMPUTER-TEACHER LAPTOP	3VYMKQ1	3VYMKQ1	07/28/11
1	COMPUTER-TEACHER LAPTOP	1K62LQ1	1K62LQ1	08/01/11
1	COMPUTER-TEACHER LAPTOP	1K6RKQ1	1K6RKQ1	08/01/11
1	COMPUTER-TEACHER LAPTOP	1K7NKQ1	1K7NKQ1	08/01/11
1	COMPUTER-TEACHER LAPTOP	4BTXKQ1	4BTXKQ1	08/03/11
1	COMPUTER-TEACHER LAPTOP	4BZXKQ1	4BZXKQ1	08/03/11
1	COMPUTER- DESKTOP	1899984	5WDWXQ1	08/04/11
1	COMPUTER- DESKTOP	1899902	5W6WXQ1	08/04/11
1	COMPUTER-TEACHER LAPTOP	4BDQKQ1	4BDQKQ1	08/04/11

October 2021 Inventoried Surplus
Picked Up and Verified 09/14/2021 thru 10/18/2021

TOTAL ASSETS

1	COMPUTER-TEACHER LAPTOP	1MGXKQ1	1MGXKQ1	08/04/11
1	COMPUTER-TEACHER LAPTOP	2SW6LQ1	2SW6LQ1	08/04/11
1	COMPUTER-TEACHER LAPTOP	2RXSKQ1	2RXSKQ1	08/08/11
1	COMPUTER-TEACHER LAPTOP	2QWMKQ1	2QWMKQ1	08/08/11
1	COMPUTER-TEACHER LAPTOP	2QVTKQ1	2QVTKQ1	08/08/11
1	COMPUTER-TEACHER LAPTOP	1JJ1LQ1	1JJ1LQ1	08/08/11
1	COMPUTER-TEACHER LAPTOP	1LSQKQ1	1LSQKQ1	08/08/11
1	COMPUTER-TEACHER LAPTOP	BBWPKQ1	BBWPKQ1	08/16/11
1	COMPUTER-TEACHER LAPTOP	BC1VKQ1	BC1VKQ1	08/16/11
1	COMPUTER- DESKTOP	1899181	HD2GYQ1	09/07/11
1	COMPUTER- DESKTOP	1899192	HD3GYQ1	09/07/11
1	COMPUTER- DESKTOP	1899162	3QK9ZQ1	09/07/11
1	COMPUTER- DESKTOP	1899158	3QJBZQ1	09/07/11
1	COMPUTER-TEACHER LAPTOP	6NGPLQ1	6NGPLQ1	09/28/11
1	COMPUTER- DESKTOP	99LLSR1	99LLSR1	11/01/11
1	COMPUTER- DESKTOP	GB9K1R1	GB9K1R1	11/01/11
1	COMPUTER- DESKTOP	GCBM1R1	GCBM1R1	11/01/11
1	COMPUTER- DESKTOP	GG8K1R1	GG8K1R1	11/01/11
1	COMPUTER- DESKTOP	GG9K1R1	GG9K1R1	11/01/11
1	COMPUTER- DESKTOP	GGDK1R1	GGDK1R1	11/01/11
1	COMPUTER- DESKTOP	GGGJ1R1	GGGJ1R1	11/01/11
1	COMPUTER- DESKTOP	GFZJ1R1	GFZJ1R1	11/01/11
1	COMPUTER- DESKTOP	GGKD1R1	GGKD1R1	11/01/11
1	COMPUTER- DESKTOP	GFKD1R1	GFKD1R1	11/01/11
1	COMPUTER- DESKTOP	GJTH1R1	GJTH1R1	11/01/11
1	COMPUTER- DESKTOP	GJNN1R1	GJNN1R1	11/01/11
1	COMPUTER- DESKTOP	GH2K1R1	GH2K1R1	11/01/11
1	COMPUTER- DESKTOP	GG5K1R1	GG5K1R1	11/01/11
1	COMPUTER- DESKTOP	GK0G1R1	GK0G1R1	11/01/11
1	COMPUTER- DESKTOP	GK4M1R1	GK4M1R1	11/01/11
1	COMPUTER- DESKTOP	GJSQ1R1	GJSQ1R1	11/01/11
1	COMPUTER- DESKTOP	CXKH1R1	CXKH1R1	11/01/11
1	COMPUTER- DESKTOP	G7NG1R1	G7NG1R1	11/01/11
1	COMPUTER- DESKTOP	GG3F1R1	GG3F1R1	11/01/11
1	COMPUTER- DESKTOP	G7HL1R1	G7HL1R1	11/01/11
1	COMPUTER- DESKTOP	G76C1R1	G76C1R1	11/01/11
1	COMPUTER- DESKTOP	G7VM1R1	G7VM1R1	11/01/11
1	COMPUTER- DESKTOP	G89F1R1	G89F1R1	11/01/11
1	COMPUTER- DESKTOP	GBHN1R1	GBHN1R1	11/01/11
1	COMPUTER- DESKTOP	CWXG1R1	CWXG1R1	11/01/11
1	COMPUTER- DESKTOP	CX3P1R1	CX3P1R1	11/01/11
1	COMPUTER- DESKTOP	CX8F1R1	CX8F1R1	11/01/11
1	COMPUTER- DESKTOP	G7WF1R1	G7WF1R1	11/01/11
1	COMPUTER- DESKTOP	G81L1R1	G81L1R1	11/01/11
1	COMPUTER- DESKTOP	G7SD1R1	G7SD1R1	11/01/11
1	COMPUTER- DESKTOP	G7VP1R1	G7VP1R1	11/01/11
1	COMPUTER- DESKTOP	G7NH1R1	G7NH1R1	11/01/11
1	COMPUTER- DESKTOP	G7WK1R1	G7WK1R1	11/01/11
1	COMPUTER- DESKTOP	G88G1R1	G88G1R1	11/01/11
1	COMPUTER- DESKTOP	G7WD1R1	G7WD1R1	11/01/11
1	COMPUTER- DESKTOP	CSVC1R1	CSVC1R1	11/01/11

October 2021 Inventoried Surplus
Picked Up and Verified 09/14/2021 thru 10/18/2021

TOTAL ASSETS

1	COMPUTER- DESKTOP	CSQN1R1	CSQN1R1	11/01/11
1	COMPUTER- DESKTOP	CTDG1R1	CTDG1R1	11/01/11
1	COMPUTER- DESKTOP	CT2J1R1	CT2J1R1	11/01/11
1	COMPUTER- DESKTOP	G6GQ1R1	G6GQ1R1	11/01/11
1	COMPUTER- DESKTOP	GF5K1R1	GF5K1R1	11/02/11
1	COMPUTER- DESKTOP	GDDM1R1	GDDM1R1	11/02/11
1	COMPUTER- DESKTOP	JNVM1R1	JNVM1R1	11/02/11
1	COMPUTER- DESKTOP	1SGZTR1	1SGZTR1	12/22/11
1	COMPUTER- DESKTOP	1SFTR1	1SFTR1	12/22/11
1	COMPUTER- DESKTOP	1SCYTR1	1SCYTR1	12/22/11
1	COMPUTER- DESKTOP	1SCXTR1	1SCXTR1	12/22/11
1	COMPUTER- DESKTOP	9PG2WR1	9PG2WR1	01/10/12
1	COMPUTER- DESKTOP	9PG4WR1	9PG4WR1	01/10/12
1	COMPUTER- DESKTOP	GDSB1R1	GDSB1R1	01/13/12
1	COMPUTER- DESKTOP	GDSK1R1	GDSK1R1	01/13/12
1	COMPUTER- DESKTOP	G62C1R1	G62C1R1	01/13/12
1	COMPUTER- DESKTOP	8FJD1R1	8FJD1R1	01/17/12
1	COMPUTER- DESKTOP	8D8J1R1	8D8J1R1	01/17/12
1	COMPUTER- DESKTOP	8GPQ1R1	8GPQ1R1	01/17/12
1	COMPUTER- DESKTOP	8FFK1R1	8FFK1R1	01/17/12
1	COMPUTER- DESKTOP	8FON1R1	8FON1R1	01/17/12
1	COMPUTER- DESKTOP	H6NGVR1	H6NGVR1	01/23/12
1	COMPUTER- DESKTOP	G7JC1R1	G7JC1R1	01/25/12
1	COMPUTER- DESKTOP	CTDQ1R1	CTDQ1R1	01/25/12
1	COMPUTER- DESKTOP	CV3J1R1	CV3J1R1	01/25/12
1	COMPUTER- DESKTOP	CVYJ1R1	CVYJ1R1	01/25/12
1	COMPUTER- DESKTOP	CV2F1R1	CV2F1R1	01/25/12
1	COMPUTER- DESKTOP	GCRQ1R1	GCRQ1R1	01/25/12
1	COMPUTER- DESKTOP	GD3M1R1	GD3M1R1	01/25/12
1	COMPUTER- DESKTOP	GF3L1R1	GF3L1R1	01/25/12
1	COMPUTER- DESKTOP	GNVQ1R1	GNVQ1R1	01/25/12
1	COMPUTER- DESKTOP	CWTB1R1	CWTB1R1	01/25/12
1	COMPUTER- DESKTOP	GNWJ1R1	GNWJ1R1	01/25/12
1	COMPUTER- DESKTOP	GGMM1R1	GGMM1R1	01/25/12
1	COMPUTER- DESKTOP	GBVQ1R1	GBVQ1R1	01/25/12
1	COMPUTER- DESKTOP	GC4M1R1	GC4M1R1	01/25/12
1	COMPUTER- DESKTOP	CWPL1R1	CWPL1R1	01/25/12
1	COMPUTER- DESKTOP	GC0G1R1	GC0G1R1	01/25/12
1	COMPUTER- DESKTOP	CWLP1R1	CWLP1R1	01/25/12
1	COMPUTER- DESKTOP	CXGP1R1	CXGP1R1	01/25/12
1	COMPUTER- DESKTOP	G6ZJ1R1	G6ZJ1R1	01/25/12
1	COMPUTER- DESKTOP	GBKN1R1	GBKN1R1	01/25/12
1	COMPUTER- DESKTOP	GBPG1R1	GBPG1R1	01/25/12
1	COMPUTER- DESKTOP	G70P1R1	G70P1R1	01/25/12
1	COMPUTER- DESKTOP	G6SM1R1	G6SM1R1	01/25/12
1	COMPUTER- DESKTOP	G73R1R1	G73R1R1	01/25/12
1	COMPUTER- DESKTOP	GNTL1R1	GNTL1R1	01/25/12
1	COMPUTER- DESKTOP	G71N1R1	G71N1R1	01/25/12
1	COMPUTER- DESKTOP	G6TB1R1	G6TB1R1	01/25/12
1	COMPUTER- DESKTOP	G6QQ1R1	G6QQ1R1	01/25/12
1	COMPUTER- DESKTOP	CSXH1R1	CSXH1R1	01/25/12

October 2021 Inventoried Surplus
Picked Up and Verified 09/14/2021 thru 10/18/2021

TOTAL ASSETS

1	COMPUTER- DESKTOP	G72F1R1	G72F1R1	01/25/12
1	COMPUTER- DESKTOP	G72N1R1	G72N1R1	01/25/12
1	COMPUTER- DESKTOP	CSYP1R1	CSYP1R1	01/25/12
1	COMPUTER- DESKTOP	G73C1R1	G73C1R1	01/25/12
1	COMPUTER- DESKTOP	G62J1R1	G62J1R1	01/25/12
1	COMPUTER- DESKTOP	GF3C1R1	GF3C1R1	01/25/12
1	COMPUTER- DESKTOP	GBVC1R1	GBVC1R1	01/25/12
1	COMPUTER- DESKTOP	G64G1R1	G64G1R1	01/25/12
1	COMPUTER- DESKTOP	G69L1R1	G69L1R1	01/25/12
1	COMPUTER- DESKTOP	G5TF1R1	G5TF1R1	01/25/12
1	COMPUTER- DESKTOP	G6BL1R1	G6BL1R1	01/25/12
1	COMPUTER- DESKTOP	GNVK1R1	GNVK1R1	01/25/12
1	COMPUTER- DESKTOP	CWTH1R1	CWTH1R1	01/25/12
1	COMPUTER- DESKTOP	CWLJ1R1	CWLJ1R1	01/25/12
1	COMPUTER- DESKTOP	8BRH1R1	8BRH1R1	01/30/12
1	COMPUTER- DESKTOP	8BTH1R1	8BTH1R1	01/30/12
1	COMPUTER- DESKTOP	8DFD1R1	8DFD1R1	01/30/12
1	COMPUTER- DESKTOP	8DWN1R1	8DWN1R1	01/30/12
1	COMPUTER- DESKTOP	8G6P1R1	8G6P1R1	01/30/12
1	COMPUTER- DESKTOP	8GFC1R1	8GFC1R1	01/30/12
1	COMPUTER- DESKTOP	CVDH1R1	CVDH1R1	01/30/12
1	COMPUTER- DESKTOP	GMGD1R1	GMGD1R1	01/31/12
1	COMPUTER- DESKTOP	GMXD1R1	GMXD1R1	01/31/12
1	COMPUTER- DESKTOP	GMCL1R1	GMCL1R1	01/31/12
1	COMPUTER- DESKTOP	GDHH1R1	GDHH1R1	01/31/12
1	COMPUTER- DESKTOP	GKSD1R1	GKSD1R1	01/31/12
1	COMPUTER- DESKTOP	GLWD1R1	GLWD1R1	01/31/12
1	COMPUTER- DESKTOP	GM8G1R1	GM8G1R1	01/31/12
1	COMPUTER- DESKTOP	GMQG1R1	GMQG1R1	01/31/12
1	COMPUTER- DESKTOP	CRVM1R1	CRVM1R1	01/31/12
1	COMPUTER- DESKTOP	GN3D1R1	GN3D1R1	01/31/12
1	COMPUTER- DESKTOP	GMLF1R1	GMLF1R1	01/31/12
1	COMPUTER- DESKTOP	GMWK1R1	GMWK1R1	01/31/12
1	COMPUTER- DESKTOP	GMNK1R1	GMNK1R1	01/31/12
1	COMPUTER- DESKTOP	GMCC1R1	GMCC1R1	01/31/12
1	COMPUTER- DESKTOP	GMTJ1R1	GMTJ1R1	01/31/12
1	COMPUTER- DESKTOP	GN0K1R1	GN0K1R1	01/31/12
1	COMPUTER- DESKTOP	GN4C1R1	GN4C1R1	01/31/12
1	COMPUTER- DESKTOP	CQZL1R1	CQZL1R1	01/31/12
1	COMPUTER- DESKTOP	GN5Q1R1	GN5Q1R1	01/31/12
1	COMPUTER- DESKTOP	GMCJ1R1	GMCJ1R1	01/31/12
1	COMPUTER- DESKTOP	D6VMTR1	D6VMTR1	02/06/12
1	COMPUTER- DESKTOP	D6QPTR1	D6QPTR1	02/06/12
1	COMPUTER- DESKTOP	D66STR1	D66STR1	02/06/12
1	COMPUTER- DESKTOP	D6CGTR1	D6CGTR1	02/06/12
1	COMPUTER- DESKTOP	D66JTR1	D66JTR1	02/06/12
1	COMPUTER- DESKTOP	D64PTR1	D64PTR1	02/06/12
1	COMPUTER- DESKTOP	D6QDTR1	D6QDTR1	02/06/12
1	COMPUTER- DESKTOP	D6HNTR1	D6HNTR1	02/06/12
1	COMPUTER- DESKTOP	9DZNTR1	9DZNTR1	02/06/12
1	COMPUTER- DESKTOP	D6WNTR1	D6WNTR1	02/06/12

October 2021 Inventoried Surplus
Picked Up and Verified 09/14/2021 thru 10/18/2021

TOTAL ASSETS

1	COMPUTER- DESKTOP	1903508	23P3WR1	02/07/12
1	COMPUTER- DESKTOP	4N0JJS1	4N0JJS1	02/22/12
1	COMPUTER- DESKTOP	4N1NJS1	4N1NJS1	02/22/12
1	COMPUTER- DESKTOP	GGYD1R1	GGYD1R1	04/26/12
1	COMPUTER PER QUOTE# 596036735 DATED 831	B7XWSR1	B7XWSR1	04/30/12
1	COMPUTER- DESKTOP	4QQBNS1	4QQBNS1	05/30/12
1	COMPUTER- DESKTOP	CSFKMS1	CSFKMS1	06/21/12
1	COMPUTER- DESKTOP	CPGJMS1	CPGJMS1	06/21/12
1	COMPUTER- DESKTOP	CNCJMS1	CNCJMS1	06/21/12
1	COMPUTER- DESKTOP	CP1GMS1	CP1GMS1	06/21/12
1	COMPUTER- DESKTOP	CL1HMS1	CL1HMS1	06/21/12
1	COMPUTER- DESKTOP	CMQLMS1	CMQLMS1	06/21/12
1	COMPUTER- DESKTOP	CNXKMS1	CNXKMS1	06/21/12
1	COMPUTER- DESKTOP	CN9HMS1	CN9HMS1	06/21/12
1	COMPUTER- DESKTOP	CP1LMS1	CP1LMS1	06/21/12
1	COMPUTER- DESKTOP	CL1KMS1	CL1KMS1	06/21/12
1	COMPUTER- DESKTOP	5XMLMS1	5XMLMS1	06/21/12
1	COMPUTER- DESKTOP	619KMS1	619KMS1	06/21/12
1	COMPUTER- DESKTOP	5V7LMS1	5V7LMS1	06/21/12
1	COMPUTER- DESKTOP	357GMS1	357GMS1	06/21/12
1	COMPUTER- DESKTOP	5WSJMS1	5WSJMS1	06/21/12
1	COMPUTER- DESKTOP	6JW5JS1	6JW5JS1	06/26/12
1	COMPUTER- DESKTOP	DMQYLS1	DMQYLS1	06/26/12
1	COMPUTER- DESKTOP	J6B3PS1	J6B3PS1	06/28/12
1	COMPUTER- DESKTOP	DKQV5V1	DKQV5V1	07/17/12
1	COMPUTER- DESKTOP	F8PCPS1	F8PCPS1	07/24/12
1	COMPUTER- DESKTOP	DJD9PS1	DJD9PS1	07/24/12
1	COMPUTER- DESKTOP	BV79PS1	BV79PS1	07/24/12
1	COMPUTER- DESKTOP	DJCBPS1	DJCBPS1	07/24/12
1	COMPUTER- DESKTOP	DJ0DPS1	DJ0DPS1	07/24/12
1	COMPUTER- DESKTOP	38TJMS1	38TJMS1	08/06/12
1	COMPUTER- DESKTOP	39RFMS1	39RFMS1	08/06/12
1	COMPUTER- DESKTOP	3B9FMS1	3B9FMS1	08/06/12
1	COMPUTER- DESKTOP	3BCFMS1	3BCFMS1	08/06/12
1	COMPUTER- DESKTOP	B5VGNS1	B5VGNS1	08/06/12
1	COMPUTER- DESKTOP	GLGHNS1	GLGHNS1	08/06/12
1	ML6020 CONTROL MODULE 14U (222-2915), (4	1940854	CS39GD1	08/13/12
1	COMPUTER- DESKTOP	DWN6MS1	DWN6MS1	08/16/12
1	COMPUTER- DESKTOP	DWM9MS1	DWM9MS1	08/16/12
1	COMPUTER- DESKTOP	DWR6MS1	DWR6MS1	08/16/12
1	COMPUTER- DESKTOP	DWK6MS1	DWK6MS1	08/16/12
1	COMPUTER- DESKTOP	DW8DMS1	DW8DMS1	08/16/12
1	COMPUTER- DESKTOP	DWM6MS1	DWM6MS1	08/16/12
1	COMPUTER- DESKTOP	B5P68V1	B5P68V1	09/11/12
1	COMPUTER- DESKTOP	9L9R6V1	9L9R6V1	09/12/12
1	COMPUTER- DESKTOP	9L9V6V1	9L9V6V1	09/12/12
1	COMPUTER- DESKTOP	4V5XTV1	4V5XTV1	10/10/12
1	COMPUTER- DESKTOP	4S0WTV1	4S0WTV1	10/10/12
1	COMPUTER- DESKTOP	4VGWTV1	4VGWTV1	10/10/12
1	COMPUTER- DESKTOP	H37TTV1	H37TTV1	10/10/12
1	COMPUTER-TEACHER LAPTOP	GKLVV1	GKLVV1	10/10/12

October 2021 Inventoried Surplus
Picked Up and Verified 09/14/2021 thru 10/18/2021

TOTAL ASSETS

1	COMPUTER- DESKTOP	4W5YTV1	4W5YTV1	10/15/12
1	COMPUTER- DESKTOP	4Z1WTV1	4Z1WTV1	10/15/12
1	COMPUTER- DESKTOP	4WJYTV1	4WJYTV1	10/15/12
1	COMPUTER- DESKTOP	4SVYTV1	4SVYTV1	10/15/12
1	COMPUTER- DESKTOP	HJ0XVV1	HJ0XVV1	10/17/12
1	COMPUTER- DESKTOP	HJ0WVV1	HJ0WVV1	10/17/12
1	COMPUTER- DESKTOP	G6JVTV1	G6JVTV1	10/19/12
1	COMPUTER- DESKTOP	G5XQTV1	G5XQTV1	10/19/12
1	COMPUTER- DESKTOP	G79TTV1	G79TTV1	10/19/12
1	COMPUTER- DESKTOP	G5VRTV1	G5VRTV1	10/19/12
1	COMPUTER- DESKTOP	G5RRTV1	G5RRTV1	10/19/12
1	COMPUTER- DESKTOP	4W4WTV1	4W4WTV1	10/19/12
1	COMPUTER- DESKTOP	4SRWTV1	4SRWTV1	10/19/12
1	COMPUTER- DESKTOP	4TWXTV1	4TWXTV1	10/19/12
1	COMPUTER- DESKTOP	4T3YTV1	4T3YTV1	10/19/12
1	COMPUTER- DESKTOP	4TKXTV1	4TKXTV1	10/19/12
1	COMPUTER- DESKTOP	4TQXTV1	4TQXTV1	10/19/12
1	COMPUTER- DESKTOP	4TDYTV1	4TDYTV1	10/19/12
1	COMPUTER- DESKTOP	4TPYTV1	4TPYTV1	10/19/12
1	COMPUTER- DESKTOP	4RTVTV1	4RTVTV1	10/19/12
1	COMPUTER- DESKTOP	4TTWTV1	4TTWTV1	10/19/12
1	COMPUTER- DESKTOP	4TYWTV1	4TYWTV1	10/19/12
1	COMPUTER- DESKTOP	4XVXTV1	4XVXTV1	10/19/12
1	COMPUTER- DESKTOP	4W6YTV1	4W6YTV1	10/19/12
1	COMPUTER- DESKTOP	G7HSTV1	G7HSTV1	10/19/12
1	COMPUTER- DESKTOP	CJDNVV1	CJDNVV1	10/30/12
1	COMPUTER- DESKTOP	CGLKVV1	CGLKVV1	11/02/12
1	COMPUTER- DESKTOP	CGCMVV1	CGCMVV1	11/02/12
1	COMPUTER- DESKTOP	CFTNVV1	CFTNVV1	11/02/12
1	COMPUTER- DESKTOP	CGJHVV1	CGJHVV1	11/02/12
1	COMPUTER- DESKTOP	CGGHVV1	CGGHVV1	11/02/12
1	COMPUTER- DESKTOP	CGSJVV1	CGSJVV1	11/02/12
1	COMPUTER- DESKTOP	CNXMVV1	CNXMVV1	11/02/12
1	COMPUTER- DESKTOP	CNTJVV1	CNTJVV1	11/02/12
1	COMPUTER- DESKTOP	CNYJVV1	CNYJVV1	11/02/12
1	COMPUTER- DESKTOP	CNSJVV1	CNSJVV1	11/02/12
1	COMPUTER- DESKTOP	BWGKVV1	BWGKVV1	11/02/12
1	COMPUTER- DESKTOP	BT4KVV1	BT4KVV1	11/08/12
1	COMPUTER- DESKTOP	BBMNVV1	BBMNVV1	11/08/12
1	COMPUTER- DESKTOP	BV4NVV1	BV4NVV1	11/08/12
1	COMPUTER- DESKTOP	BBBHVV1	BBBHVV1	11/08/12
1	COMPUTER- DESKTOP	BX2KVV1	BX2KVV1	11/08/12
1	COMPUTER- DESKTOP	BS7LVV1	BS7LVV1	11/08/12
1	COMPUTER- DESKTOP	BTGLVV1	BTGLVV1	11/08/12
1	COMPUTER- DESKTOP	BTFNVV1	BTFNVV1	11/08/12
1	COMPUTER- DESKTOP	BSBNVV1	BSBNVV1	11/08/12
1	COMPUTER- DESKTOP	BWTNVV1	BWTNVV1	11/08/12
1	COMPUTER- DESKTOP	BSPNVV1	BSPNVV1	11/08/12
1	COMPUTER- DESKTOP	BWVJVV1	BWVJVV1	11/08/12
1	COMPUTER- DESKTOP	BW8HVV1	BW8HVV1	11/08/12
1	COMPUTER- DESKTOP	BTXMVV1	BTXMVV1	11/08/12

October 2021 Inventoried Surplus
Picked Up and Verified 09/14/2021 thru 10/18/2021

TOTAL ASSETS

1	COMPUTER- DESKTOP	BBRKVV1	BBRKVV1	11/08/12
1	COMPUTER- DESKTOP	BB6NVV1	BB6NVV1	11/08/12
1	COMPUTER- DESKTOP	BB0MVV1	BB0MVV1	11/08/12
1	COMPUTER- DESKTOP	BS9JVV1	BS9JVV1	11/08/12
1	COMPUTER- DESKTOP	BBSHVV1	BBSHVV1	11/08/12
1	COMPUTER- DESKTOP	BB1JVV1	BB1JVV1	11/08/12
1	COMPUTER- DESKTOP	BBRLVV1	BBRLVV1	11/08/12
1	COMPUTER- DESKTOP	BW5NVV1	BW5NVV1	11/08/12
1	COMPUTER- DESKTOP	BWYJVV1	BWYJVV1	11/08/12
1	COMPUTER- DESKTOP	BBFNVV1	BBFNVV1	11/08/12
1	COMPUTER- DESKTOP	B9WJVV1	B9WJVV1	11/08/12
1	COMPUTER- DESKTOP	BBRJVV1	BBRJVV1	11/08/12
1	COMPUTER- DESKTOP	BBDHVV1	BBDHVV1	11/08/12
1	COMPUTER- DESKTOP	BB9NVV1	BB9NVV1	11/08/12
1	COMPUTER- DESKTOP	BS3PVV1	BS3PVV1	11/08/12
1	COMPUTER- DESKTOP	BTFHVV1	BTFHVV1	11/08/12
1	COMPUTER- DESKTOP	BS8LVV1	BS8LVV1	11/08/12
1	COMPUTER- DESKTOP	BS5PVV1	BS5PVV1	11/08/12
1	COMPUTER- DESKTOP	BWSNVV1	BWSNVV1	11/08/12
1	COMPUTER- DESKTOP	BS2JVV1	BS2JVV1	11/08/12
1	COMPUTER- DESKTOP	BS6LVV1	BS6LVV1	11/08/12
1	COMPUTER- DESKTOP	BBFLVV1	BBFLVV1	11/08/12
1	COMPUTER- DESKTOP	BTDKVV1	BTDKVV1	11/08/12
1	COMPUTER- DESKTOP	B9ZJVV1	B9ZJVV1	11/08/12
1	COMPUTER- DESKTOP	BWGMVV1	BWGMVV1	11/08/12
1	COMPUTER- DESKTOP	BWXMVV1	BWXMVV1	11/08/12
1	COMPUTER- DESKTOP	BX7KVV1	BX7KVV1	11/08/12
1	COMPUTER- DESKTOP	BV8KVV1	BV8KVV1	11/08/12
1	COMPUTER- DESKTOP	BVBKVV1	BVBKVV1	11/08/12
1	COMPUTER- DESKTOP	CQ5LVV1	CQ5LVV1	11/08/12
1	COMPUTER- DESKTOP	CFLMVV1	CFLMVV1	11/08/12
1	COMPUTER- DESKTOP	CHLKVV1	CHLKVV1	11/08/12
1	COMPUTER- DESKTOP	CFJVV1	CFJVV1	11/08/12
1	COMPUTER- DESKTOP	CFBLVV1	CFBLVV1	11/08/12
1	COMPUTER- DESKTOP	CR8NVV1	CR8NVV1	11/08/12
1	COMPUTER- DESKTOP	CR7MVV1	CR7MVV1	11/08/12
1	COMPUTER- DESKTOP	CS1JVV1	CS1JVV1	11/12/12
1	COMPUTER- DESKTOP	CS4JVV1	CS4JVV1	11/12/12
1	COMPUTER- DESKTOP	CT5KVV1	CT5KVV1	11/12/12
1	COMPUTER- DESKTOP	CSCNVV1	CSCNVV1	11/12/12
1	COMPUTER- DESKTOP	CS8MVV1	CS8MVV1	11/12/12
1	COMPUTER- DESKTOP	CS5JVV1	CS5JVV1	11/12/12
1	COMPUTER- DESKTOP	CSFKVV1	CSFKVV1	11/12/12
1	COMPUTER- DESKTOP	CSDLVV1	CSDLVV1	11/12/12
1	COMPUTER- DESKTOP	CSHHVV1	CSHHVV1	11/12/12
1	COMPUTER- DESKTOP	CLCJVV1	CLCJVV1	11/19/12
1	COMPUTER- DESKTOP	CLCKVV1	CLCKVV1	11/19/12
1	COMPUTER- DESKTOP	CJXHVV1	CJXHVV1	11/19/12
1	COMPUTER- DESKTOP	CJYJVV1	CJYJVV1	11/19/12
1	COMPUTER- DESKTOP	CJVLVV1	CJVLVV1	11/19/12
1	COMPUTER- DESKTOP	CJRKVV1	CJRKVV1	11/19/12

October 2021 Inventoried Surplus
Picked Up and Verified 09/14/2021 thru 10/18/2021

TOTAL ASSETS

1	COMPUTER- DESKTOP	CLFHVV1	CLFHVV1	11/19/12
1	COMPUTER- DESKTOP	CK3PVV1	CK3PVV1	11/19/12
1	COMPUTER- DESKTOP	CL0NVV1	CL0NVV1	11/19/12
1	COMPUTER- DESKTOP	CKZNVV1	CKZNVV1	11/19/12
1	COMPUTER- DESKTOP	CJYLVV1	CJYLVV1	11/19/12
1	COMPUTER- DESKTOP	CJVNVV1	CJVNVV1	11/19/12
1	COMPUTER- DESKTOP	CJTLVV1	CJTLVV1	11/19/12
1	COMPUTER- DESKTOP	CJMNVV1	CJMNVV1	11/19/12
1	COMPUTER- DESKTOP	CLDJVV1	CLDJVV1	11/19/12
1	COMPUTER- DESKTOP	CK1LVV1	CK1LVV1	11/19/12
1	COMPUTER- DESKTOP	CJJNVV1	CJJNVV1	11/19/12
1	COMPUTER- DESKTOP	CJHJVV1	CJHJVV1	11/19/12
1	COMPUTER- DESKTOP	CK3MVV1	CK3MVV1	11/19/12
1	COMPUTER- DESKTOP	CJMJVV1	CJMJVV1	11/19/12
1	COMPUTER- DESKTOP	CW0MVV1	CW0MVV1	11/26/12
1	NSP-00212513-DELL CAT-A BIGIP SVC PREMIU	1830230	F5-SQDD-CDNL	12/03/12
1	COMPUTER- SERVER	1911150	32L8WW1	01/10/13
1	COMPUTER- DESKTOP	BK8TPW1	BK8TPW1	02/19/13
1	COMPUTER- DESKTOP	H7TTPW1	H7TTPW1	02/19/13
1	COMPUTER- DESKTOP	DV8RPW1	DV8RPW1	02/19/13
1	COMPUTER- DESKTOP	DVJRPW1	DVJRPW1	02/19/13
1	COMPUTER- DESKTOP	DVFSPW1	DVFSPW1	02/19/13
1	COMPUTER- DESKTOP	CZYTPW1	CZYTPW1	02/19/13
1	COMPUTER- DESKTOP	CZTTPW1	CZTTPW1	02/19/13
1	COMPUTER- DESKTOP	H80VPW1	H80VPW1	02/19/13
1	COMPUTER- DESKTOP	D0GSPW1	D0GSPW1	02/19/13
1	COMPUTER- DESKTOP	CZ4RPW1	CZ4RPW1	02/19/13
1	COMPUTER- DESKTOP	D1VRPW1	D1VRPW1	02/19/13
1	SERVER ADAPTOR (430-444); RISERS/PCLE SL	1911295	H8N9PW1	03/06/13
1	SERVER ADAPTOR (430-444); RISERS/PCLE SL	1911296	H8N8PW1	03/06/13
1	COMPUTER- DESKTOP	4FKRSW1	4FKRSW1	03/19/13
1	COMPUTER- DESKTOP	4FQRSW1	4FQRSW1	03/19/13
1	COMPUTER- DESKTOP	4FRPSW1	4FRPSW1	03/19/13
1	COMPUTER- SERVER	1911294	CDDMQW1	03/26/13
1	COMPUTER LAPTOP	5FYSXW1	5FYSXW1	03/29/13
1	HARD DRIVES (317-8474); RISERS/PCLE SLOT	1830595	7X3C7X1	04/04/13
1	PE R620 SERVER W/UP TO 8 HARD DRIVES &	1830594	4RFKYV1	04/04/13
1	POWER EDGE SQL SERVER	1909682	BPR71Y1	04/22/13
1	COMPUTER- SERVER	1936427	13XNQW1	05/02/13
1	COMPUTER-SERVER	1919387	3HQ1TW1	05/17/13
1	COMPUTER SERVER	1830597	DDLRCX1	05/28/13
1	COMPUTER- DESKTOP	HPMBCX1	HPMBCX1	06/27/13
1	COMPUTER- DESKTOP	3GRDFX1	3GRDFX1	06/27/13
1	COMPUTER- DESKTOP	3GZBFX1	3GZBFX1	06/27/13
1	COMPUTER SERVER	1830753	CFZVFX1	06/27/13
1	COMPUTER SERVER	1830752	CFYXFX1	06/27/13
1	COMPUTER SERVER	1830751	CFZWFX1	06/27/13
1	COMPUTER- DESKTOP	5SZYGX1	5SZYGX1	09/16/13
1	COMPUTER-SERVER	1830761	D8MV9Y1	11/14/13
1	DELL SERVER POWER EDGE R520	1830759	D8KX9Y1	11/14/13
1	DELL SERVER POWER EDGE R520	1830760	D8RV9Y1	11/14/13

October 2021 Inventoried Surplus
Picked Up and Verified 09/14/2021 thru 10/18/2021

TOTAL ASSETS

1	COMPUTER- DESKTOP	9CHC8Z1	9CHC8Z1	12/12/13
1	COMPUTER- DESKTOP	9BYB8Z1	9BYB8Z1	12/12/13
1	COMPUTER- DESKTOP	9BQB8Z1	9BQB8Z1	12/12/13
1	COMPUTER- DESKTOP	DL1G8Z1	DL1G8Z1	12/12/13
1	COMPUTER- DESKTOP	DKQJ8Z1	DKQJ8Z1	12/12/13
1	COMPUTER- DESKTOP	DLDJ8Z1	DLDJ8Z1	12/12/13
1	COMPUTER- DESKTOP	DLGH8Z1	DLGH8Z1	12/12/13
1	COMPUTER- DESKTOP	DKWH8Z1	DKWH8Z1	12/12/13
1	COMPUTER- DESKTOP	DKZF8Z1	DKZF8Z1	12/12/13
1	LATTITUDE LAP TOP	3218PX1	3218PX1	03/14/14
1	COMPUTER- DESKTOP	CLGDL02	CLGDL02	05/22/14
1	COMPUTER- DESKTOP	B5YLL02	B5YLL02	06/09/14
1	COMPUTER- DESKTOP	B89FL02	B89FL02	06/09/14
1	COMPUTER- DESKTOP	F056M02	F056M02	06/09/14
1	COMPUTER- DESKTOP	F046M02	F046M02	06/09/14
1	COMPUTER- DESKTOP	F062M02	F062M02	06/09/14
1	COMPUTER- DESKTOP	F0F3M02	F0F3M02	06/09/14
1	COMPUTER- DESKTOP	F032M02	F032M02	06/09/14
1	COMPUTER- DESKTOP	F094M02	F094M02	06/09/14
1	COMPUTER- DESKTOP	F066M02	F066M02	06/09/14
1	COMPUTER- DESKTOP	F086M02	F086M02	06/09/14
1	COMPUTER- DESKTOP	F0B6M02	F0B6M02	06/09/14
1	COMPUTER- DESKTOP	F0F7M02	F0F7M02	06/09/14
1	COMPUTER- DESKTOP	F0F2M02	F0F2M02	06/09/14
1	COMPUTER- DESKTOP	F042M02	F042M02	06/09/14
1	COMPUTER- DESKTOP	F093M02	F093M02	06/09/14
1	COMPUTER- DESKTOP	F0F6M02	F0F6M02	06/09/14
1	COMPUTER- DESKTOP	F0C6M02	F0C6M02	06/09/14
1	COMPUTER- DESKTOP	F036M02	F036M02	06/09/14
1	COMPUTER- DESKTOP	82BTT12	82BTT12	06/09/14
1	COMPUTER- DESKTOP	89S7M02	89S7M02	06/10/14
1	COMPUTER- DESKTOP	8F89M02	8F89M02	06/10/14
1	COMPUTER- DESKTOP	89YFM02	89YFM02	06/10/14
1	COMPUTER- DESKTOP	8JSCM02	8JSCM02	06/10/14
1	COMPUTER- DESKTOP	8JLFM02	8JLFM02	06/10/14
1	COMPUTER- DESKTOP	8JVCM02	8JVCM02	06/10/14
1	COMPUTER- DESKTOP	89C9M02	89C9M02	06/10/14
1	COMPUTER- DESKTOP	88WBM02	88WBM02	06/10/14
1	COMPUTER- DESKTOP	8BNDM02	8BNDM02	06/10/14
1	COMPUTER- DESKTOP	8D2DM02	8D2DM02	06/10/14
1	COMPUTER- DESKTOP	88J8M02	88J8M02	06/10/14
1	COMPUTER- DESKTOP	793PL02	793PL02	06/10/14
1	COMPUTER- DESKTOP	B62GL02	B62GL02	06/10/14
1	COMPUTER- DESKTOP	D5T3M02	D5T3M02	06/16/14
1	COMPUTER- DESKTOP	D5G1M02	D5G1M02	06/16/14
1	COMPUTER- DESKTOP	D5G7M02	D5G7M02	06/16/14
1	COMPUTER- DESKTOP	D5H1M02	D5H1M02	06/16/14
1	COMPUTER- DESKTOP	46H1N02	46H1N02	06/17/14
1	COMPUTER- DESKTOP	48Q1N02	48Q1N02	06/17/14
1	COMPUTER- DESKTOP	4711N02	4711N02	06/17/14
1	COMPUTER- DESKTOP	45J1N02	45J1N02	06/17/14

October 2021 Inventoried Surplus
Picked Up and Verified 09/14/2021 thru 10/18/2021

TOTAL ASSETS

1	COMPUTER- DESKTOP	5HRFL02	5HRFL02	06/17/14
1	COMPUTER- DESKTOP	B0NNM02	B0NNM02	06/18/14
1	COMPUTER- DESKTOP	B0QKM02	B0QKM02	06/18/14
1	COMPUTER- DESKTOP	8G78M02	8G78M02	06/19/14
1	COMPUTER- DESKTOP	1058V12	1058V12	06/23/14
1	COMPUTER- DESKTOP	46XZM02	46XZM02	06/25/14
1	COMPUTER- DESKTOP	46T1N02	46T1N02	06/25/14
1	COMPUTER- DESKTOP	8KQ9M02	8KQ9M02	06/30/14
1	COMPUTER- DESKTOP	8FBDM02	8FBDM02	06/30/14
1	COMPUTER- DESKTOP	8GB9M02	8GB9M02	06/30/14
1	COMPUTER- DESKTOP	JG03M02	JG03M02	06/30/14
1	COMPUTER- DESKTOP	JFZ6M02	JFZ6M02	06/30/14
1	COMPUTER- DESKTOP	JFT8M02	JFT8M02	06/30/14
1	COMPUTER- DESKTOP	B7BJL02	B7BJL02	06/30/14
1	COMPUTER- DESKTOP	7BSQL02	7BSQL02	06/30/14
1	COMPUTER LAPTOP	CRB6G12	CRB6G12	07/21/14
1	COMPUTER- LAPTOP	F0CG512	F0CG512	07/21/14
1	COMPUTER- DESKTOP	211SW12	211SW12	08/04/14
1	COMPUTER- DESKTOP	21RRW12	21RRW12	08/04/14
1	COMPUTER- TEACHER LAPTOP - REFRESH	HFS8H12	HFS8H12	08/04/14
1	COMPUTER- TEACHER LAPTOP - REFRESH	4DL8H12	4DL8H12	08/04/14
1	COMPUTER- TEACHER LAPTOP - REFRESH	7YM8H12	7YM8H12	08/04/14
1	COMPUTER- TEACHER LAPTOP - REFRESH	19VYH12	19VYH12	08/13/14
1	COMPUTER LAPTOP	2C1LL12	2C1LL12	09/09/14
1	COMPUTER- LAPTOP	CVZG912	CVZG912	09/25/14
1	COMPUTER- LAPTOP	8TVJJ12	8TVJJ12	10/09/14
1	COMPUTER- LAPTOP	1TLCB12	1TLCB12	02/13/15
1	COMPUTER- LAPTOP	FTLCB12	FTLCB12	02/13/15
1	COMPUTER- LAPTOP	6TLCB12	6TLCB12	02/13/15
1	COMPUTER- LAPTOP	FVLCB12	FVLCB12	02/13/15
1	COMPUTER- LAPTOP	9TLCB12	9TLCB12	02/13/15
1	COMPUTER- LAPTOP	3TLCB12	3TLCB12	02/13/15
1	COMPUTER- LAPTOP	3VLCB12	3VLCB12	02/13/15
1	COMPUTER- LAPTOP	JTLCB12	JTLCB12	02/13/15
1	COMPUTER- LAPTOP	JLMP432	JLMP432	03/03/15
1	COMPUTER- LAPTOP	7MQ6532	7MQ6532	03/09/15
1	COMPUTER- LAPTOP	18Q6532	18Q6532	03/09/15
1	COMPUTER- LAPTOP	99Q6532	99Q6532	03/09/15
1	COMPUTER- LAPTOP	FMMP432	FMMP432	03/09/15
1	COMPUTER- LAPTOP	6PHB832	6PHB832	03/09/15
1	COMPUTER- LAPTOP	25Z3732	25Z3732	03/12/15
1	COMPUTER- LAPTOP	JYFH932	JYFH932	03/12/15
1	COMPUTER- LAPTOP	555L932	555L932	03/12/15
1	COMPUTER- LAPTOP	JYT6532	JYT6532	03/12/15
1	COMPUTER- LAPTOP	84GH932	84GH932	03/12/15
1	COMPUTER- LAPTOP	2BZ3732	2BZ3732	03/12/15
1	COMPUTER- LAPTOP	D7GH932	D7GH932	03/12/15
1	COMPUTER- LAPTOP	CZFH932	CZFH932	03/12/15
1	COMPUTER- LAPTOP	C8GH932	C8GH932	03/12/15
1	COMPUTER- LAPTOP	2BGH932	2BGH932	03/12/15
1	COMPUTER- LAPTOP	43DH932	43DH932	03/12/15

October 2021 Inventoried Surplus
Picked Up and Verified 09/14/2021 thru 10/18/2021

TOTAL ASSETS

1	COMPUTER- LAPTOP	D5GH932	D5GH932	03/12/15
1	COMPUTER- LAPTOP	68GH932	68GH932	03/12/15
1	COMPUTER- LAPTOP	27T6532	27T6532	03/12/15
1	COMPUTER- LAPTOP	1FZ3732	1FZ3732	03/12/15
1	COMPUTER- LAPTOP	JMHC532	JMHC532	03/12/15
1	COMPUTER- LAPTOP	47Z3732	47Z3732	03/12/15
1	COMPUTER- LAPTOP	G0GH932	G0GH932	03/12/15
1	COMPUTER- LAPTOP	4GZ3732	4GZ3732	03/12/15
1	COMPUTER- LAPTOP	575L932	575L932	03/12/15
1	COMPUTER- LAPTOP	HF4L932	HF4L932	03/12/15
1	COMPUTER- LAPTOP	CGZ3732	CGZ3732	03/12/15
1	COMPUTER- LAPTOP	6JZ3732	6JZ3732	03/12/15
1	COMPUTER- LAPTOP	54GH932	54GH932	03/12/15
1	COMPUTER- LAPTOP	B7Z3732	B7Z3732	03/12/15
1	COMPUTER- LAPTOP	C3GH932	C3GH932	03/12/15
1	COMPUTER- LAPTOP	FC5L932	FC5L932	03/12/15
1	COMPUTER- LAPTOP	FLHC532	FLHC532	03/12/15
1	COMPUTER- LAPTOP	7H4L932	7H4L932	03/12/15
1	COMPUTER- LAPTOP	FCZ3732	FCZ3732	03/12/15
1	COMPUTER- LAPTOP	8Q4L932	8Q4L932	03/12/15
1	COMPUTER- LAPTOP	9GDH932	9GDH932	03/12/15
1	COMPUTER- LAPTOP	G6Z3732	G6Z3732	03/12/15
1	COMPUTER- LAPTOP	1Y0L932	1Y0L932	03/12/15
1	COMPUTER- LAPTOP	38DH932	38DH932	03/12/15
1	COMPUTER- LAPTOP	B5GH932	B5GH932	03/12/15
1	COMPUTER- LAPTOP	6N4L932	6N4L932	03/12/15
1	COMPUTER- LAPTOP	4XFH932	4XFH932	03/12/15
1	COMPUTER- LAPTOP	J15L932	J15L932	03/12/15
1	COMPUTER- LAPTOP	GYFH932	GYFH932	03/12/15
1	COMPUTER- LAPTOP	JBZ3732	JBZ3732	03/12/15
1	COMPUTER- LAPTOP	18DH932	18DH932	03/12/15
1	COMPUTER- LAPTOP	D5Z3732	D5Z3732	03/12/15
1	COMPUTER- LAPTOP	79Z3732	79Z3732	03/12/15
1	COMPUTER- LAPTOP	CM4L932	CM4L932	03/12/15
1	COMPUTER- LAPTOP	G7Z3732	G7Z3732	03/12/15
1	COMPUTER- LAPTOP	DWFH932	DWFH932	03/12/15
1	COMPUTER- LAPTOP	795L932	795L932	03/12/15
1	COMPUTER- LAPTOP	FZFH932	FZFH932	03/12/15
1	COMPUTER- LAPTOP	9JDH932	9JDH932	03/12/15
1	COMPUTER- LAPTOP	4KC8532	4KC8532	03/12/15
1	COMPUTER- LAPTOP	H8GH932	H8GH932	03/12/15
1	COMPUTER- LAPTOP	J3GH932	J3GH932	03/12/15
1	COMPUTER- LAPTOP	48GH932	48GH932	03/12/15
1	COMPUTER- LAPTOP	B0JB832	B0JB832	03/12/15
1	COMPUTER- LAPTOP	G5GH932	G5GH932	03/12/15
1	COMPUTER- LAPTOP	J8ZSD32	J8ZSD32	04/03/15
1	COMPUTER- LAPTOP	B6DH932	B6DH932	04/13/15
1	COMPUTER- LAPTOP	4F5L932	4F5L932	04/13/15
1	COMPUTER- LAPTOP	B95L932	B95L932	04/13/15
1	COMPUTER- LAPTOP	JP4L932	JP4L932	04/13/15
1	COMPUTER- LAPTOP	8VHC532	8VHC532	04/13/15

October 2021 Inventoried Surplus
Picked Up and Verified 09/14/2021 thru 10/18/2021

TOTAL ASSETS

1	COMPUTER- LAPTOP	1C5L932	1C5L932	04/13/15
1	COMPUTER- LAPTOP	431L932	431L932	04/13/15
1	COMPUTER- LAPTOP	25DH932	25DH932	04/13/15
1	COMPUTER- LAPTOP	B15L932	B15L932	04/13/15
1	COMPUTER- LAPTOP	495L932	495L932	04/13/15
1	COMPUTER- LAPTOP	430KD32	430KD32	04/13/15
1	COMPUTER- LAPTOP	110KD32	110KD32	04/13/15
1	COMPUTER- LAPTOP	F00KD32	F00KD32	04/13/15
1	COMPUTER- DESKTOP	61V8B42	61V8B42	04/15/15
1	COMPUTER- LAPTOP	F7CYF32	F7CYF32	04/15/15
1	COMPUTER- LAPTOP	71CYF32	71CYF32	04/15/15
1	COMPUTER- LAPTOP	76CYF32	76CYF32	04/15/15
1	COMPUTER- LAPTOP	FNCYF32	FNCYF32	04/15/15
1	COMPUTER- LAPTOP	GCCYF32	GCCYF32	04/15/15
1	COMPUTER- LAPTOP	9CCYF32	9CCYF32	04/15/15
1	COMPUTER- LAPTOP	FQCYF32	FQCYF32	04/15/15
1	COMPUTER- LAPTOP	6PCYF32	6PCYF32	04/15/15
1	COMPUTER- LAPTOP	F9CYF32	F9CYF32	04/15/15
1	COMPUTER- LAPTOP	12CYF32	12CYF32	04/15/15
1	COMPUTER- LAPTOP	2WBYF32	2WBYF32	04/15/15
1	COMPUTER- LAPTOP	60CYF32	60CYF32	04/15/15
1	COMPUTER- LAPTOP	HCCYF32	HCCYF32	04/15/15
1	COMPUTER- LAPTOP	JLBYF32	JLBYF32	04/15/15
1	COMPUTER- LAPTOP	6BCYF32	6BCYF32	04/15/15
1	COMPUTER- LAPTOP	JLCYF32	JLCYF32	04/15/15
1	COMPUTER- LAPTOP	2HBYF32	2HBYF32	04/15/15
1	COMPUTER- LAPTOP	4WBYF32	4WBYF32	04/15/15
1	COMPUTER- LAPTOP	JPBYF32	JPBYF32	04/15/15
1	COMPUTER- LAPTOP	FVBYF32	FVBYF32	04/15/15
1	COMPUTER- LAPTOP	CMBYF32	CMBYF32	04/15/15
1	COMPUTER- LAPTOP	CXCYF32	CXCYF32	04/15/15
1	COMPUTER- LAPTOP	DFCYF32	DFCYF32	04/15/15
1	COMPUTER- LAPTOP	C2CYF32	C2CYF32	04/15/15
1	COMPUTER- LAPTOP	FLBYF32	FLBYF32	04/15/15
1	COMPUTER- LAPTOP	7ZBYF32	7ZBYF32	04/15/15
1	COMPUTER- LAPTOP	DRBYF32	DRBYF32	04/15/15
1	COMPUTER- LAPTOP	1CCYF32	1CCYF32	04/15/15
1	COMPUTER- LAPTOP	3DCYF32	3DCYF32	04/15/15
1	COMPUTER- LAPTOP	18CYF32	18CYF32	04/15/15
1	COMPUTER- LAPTOP	2JP4M32	2JP4M32	06/01/15
1	COMPUTER- LAPTOP REFRESH	GXD5M32	GXD5M32	06/02/15
1	COMPUTER- LAPTOP REFRESH	DW34M32	DW34M32	06/02/15
1	COMPUTER- LAPTOP REFRESH	67V8M32	67V8M32	06/02/15
1	COMPUTER- LAPTOP REFRESH	87W4M32	87W4M32	06/02/15
1	COMPUTER- LAPTOP REFRESH	JR57M32	JR57M32	06/04/15
1	COMPUTER- LAPTOP	4TM7R32	4TM7R32	06/15/15
1	COMPUTER- LAPTOP REFRESH	DB24R32	DB24R32	06/16/15
1	COMPUTER- LAPTOP REFRESH	BK67R32	BK67R32	06/17/15
1	COMPUTER- LAPTOP REFRESH	HB6FR32	HB6FR32	06/22/15
1	COMPUTER- SERVER	1940073	HR56F42	06/22/15
1	COMPUTER- LAPTOP REFRESH	G0PJR32	G0PJR32	06/23/15

October 2021 Inventoried Surplus
Picked Up and Verified 09/14/2021 thru 10/18/2021

TOTAL ASSETS

1	COMPUTER- LAPTOP REFRESH	83MSM32	83MSM32	06/23/15
1	COMPUTER- LAPTOP REFRESH	F7BGR32	F7BGR32	06/23/15
1	COMPUTER- LAPTOP	DFNLR32	DFNLR32	06/29/15
1	COMPUTER- LAPTOP	3SJYG52	3SJYG52	06/29/15
1	COMPUTER- LAPTOP	GRJYG52	GRJYG52	06/29/15
1	COMPUTER- LAPTOP	5RJYG52	5RJYG52	06/29/15
1	COMPUTER- LAPTOP	6RJYG52	6RJYG52	06/29/15
1	COMPUTER- LAPTOP	FSJYG52	FSJYG52	06/29/15
1	COMPUTER- LAPTOP	1SJYG52	1SJYG52	06/29/15
1	COMPUTER- LAPTOP	4SJYG52	4SJYG52	06/29/15
1	COMPUTER- LAPTOP	7SJYG52	7SJYG52	06/29/15
1	COMPUTER- LAPTOP	9RJYG52	9RJYG52	06/29/15
1	COMPUTER- LAPTOP	CSJYG52	CSJYG52	06/29/15
1	COMPUTER- LAPTOP	DSJYG52	DSJYG52	06/29/15
1	COMPUTER- LAPTOP	6SJYG52	6SJYG52	06/29/15
1	COMPUTER- LAPTOP	FRJYG52	FRJYG52	06/29/15
1	COMPUTER- LAPTOP	2RJYG52	2RJYG52	06/29/15
1	COMPUTER- LAPTOP	8RJYG52	8RJYG52	06/29/15
1	COMPUTER- LAPTOP	8SJYG52	8SJYG52	06/29/15
1	COMPUTER- LAPTOP	GSJYG52	GSJYG52	06/29/15
1	COMPUTER- LAPTOP	7RJYG52	7RJYG52	06/29/15
1	COMPUTER- LAPTOP	4RJYG52	4RJYG52	06/29/15
1	COMPUTER- LAPTOP	9SJYG52	9SJYG52	06/29/15
1	COMPUTER- LAPTOP	5SJYG52	5SJYG52	06/29/15
1	COMPUTER- LAPTOP	1RJYG52	1RJYG52	06/29/15
1	COMPUTER- LAPTOP	DRJYG52	DRJYG52	06/29/15
1	COMPUTER- LAPTOP	CRJYG52	CRJYG52	06/29/15
1	COMPUTER- LAPTOP	JRJYG52	JRJYG52	06/29/15
1	COMPUTER- LAPTOP	HZL0C32	HZL0C32	06/29/15
1	COMPUTER- LAPTOP	5954H52	5954H52	06/30/15
1	COMPUTER- LAPTOP	8B54H52	8B54H52	06/30/15
1	COMPUTER- LAPTOP	F954H52	F954H52	06/30/15
1	COMPUTER- LAPTOP	2B54H52	2B54H52	06/30/15
1	COMPUTER- LAPTOP	1D54H52	1D54H52	06/30/15
1	COMPUTER- LAPTOP	7C54H52	7C54H52	06/30/15
1	COMPUTER- LAPTOP	GC54H52	GC54H52	06/30/15
1	COMPUTER- LAPTOP	DB54H52	DB54H52	06/30/15
1	COMPUTER- LAPTOP	1954H52	1954H52	06/30/15
1	COMPUTER- LAPTOP	5D54H52	5D54H52	06/30/15
1	COMPUTER- LAPTOP	70KJM32	70KJM32	06/30/15
1	COMPUTER- LAPTOP	5MSJR32	5MSJR32	06/30/15
1	COMPUTER- LAPTOP	1C6GR32	1C6GR32	06/30/15
1	COMPUTER- LAPTOP	7RMJR32	7RMJR32	06/30/15
1	COMPUTER- SERVER	1940423	4GMVR52	06/30/15
1	COMPUTER- LAPTOP	84Y6B32	84Y6B32	07/20/15
1	COMPUTER- LAPTOP	G3Y6B32	G3Y6B32	07/20/15
1	COMPUTER- LAPTOP	71S7B32	71S7B32	07/20/15
1	COMPUTER- LAPTOP	B2S7B32	B2S7B32	07/20/15
1	COMPUTER- LAPTOP	D0S7B32	D0S7B32	07/20/15
1	COMPUTER- LAPTOP	7DQ7B32	7DQ7B32	07/20/15
1	COMPUTER- LAPTOP	FGQ7B32	FGQ7B32	07/20/15

October 2021 Inventoried Surplus
Picked Up and Verified 09/14/2021 thru 10/18/2021

TOTAL ASSETS

1	COMPUTER- LAPTOP	HK0BH52	HK0BH52	07/20/15
1	COMPUTER- LAPTOP	HQ0BH52	HQ0BH52	07/20/15
1	COMPUTER- LAPTOP	39LRK52	39LRK52	08/28/15
1	COMPUTER- LAPTOP	C8LRK52	C8LRK52	08/28/15
1	COMPUTER- LAPTOP	7BLRK52	7BLRK52	08/28/15
1	COMPUTER- LAPTOP	F8LRK52	F8LRK52	08/28/15
1	COMPUTER- LAPTOP	68LRK52	68LRK52	08/28/15
1	COMPUTER- DESKTOP REFRESH	9XJP052	9XJP052	09/10/15
1	COMPUTER- LAPTOP	4QWRK52	4QWRK52	09/10/15
1	COMPUTER- LAPTOP	BPWRK52	BPWRK52	09/10/15
1	COMPUTER- LAPTOP	4KVRK52	4KVRK52	09/10/15
1	COMPUTER- LAPTOP	DMVRK52	DMVRK52	09/10/15
1	COMPUTER- DESKTOP	27K1C62	27K1C62	09/24/15
1	COMPUTER- DESKTOP	26XVP52	26XVP52	09/24/15
1	COMPUTER- DESKTOP	2QGZB62	2QGZB62	09/24/15
1	COMPUTER- LAPTOP	GR2JL52	GR2JL52	09/28/15
1	COMPUTER- LAPTOP	FQ4JL52	FQ4JL52	09/28/15
1	COMPUTER- LAPTOP	HS2JL52	HS2JL52	09/28/15
1	COMPUTER- LAPTOP	3V2JL52	3V2JL52	09/28/15
1	COMPUTER- LAPTOP	6R4JL52	6R4JL52	09/28/15
1	COMPUTER- LAPTOP	6Q4JL52	6Q4JL52	09/28/15
1	COMPUTER- LAPTOP	8Q4JL52	8Q4JL52	09/28/15
1	COMPUTER- LAPTOP	2S2JL52	2S2JL52	09/28/15
1	COMPUTER- LAPTOP	4GQP162	4GQP162	10/01/15
1	COMPUTER- LAPTOP	J96TL52	J96TL52	10/06/15
1	COMPUTER- LAPTOP	496TL52	496TL52	10/06/15
1	COMPUTER- LAPTOP	FC6TL52	FC6TL52	10/06/15
1	COMPUTER- LAPTOP	1C4TL52	1C4TL52	10/06/15
1	COMPUTER- LAPTOP	JW3TL52	JW3TL52	10/06/15
1	COMPUTER- LAPTOP	CJ5TL52	CJ5TL52	10/06/15
1	COMPUTER- LAPTOP	F96TL52	F96TL52	10/06/15
1	COMPUTER- LAPTOP	3J5TL52	3J5TL52	10/06/15
1	COMPUTER- LAPTOP	JC4TL52	JC4TL52	10/06/15
1	COMPUTER- LAPTOP	4B4TL52	4B4TL52	10/06/15
1	COMPUTER- LAPTOP	CG5TL52	CG5TL52	10/06/15
1	COMPUTER- DESKTOP REFRESH	910SV52	910SV52	10/14/15
1	COMPUTER- LAPTOP	2X2YL52	2X2YL52	10/14/15
1	COMPUTER- LAPTOP	1945335	2VX9K42	11/05/15
1	COMPUTER- LAPTOP	28Q9N52	28Q9N52	11/09/15
1	COMPUTER- LAPTOP	CBQ9N52	CBQ9N52	11/09/15
1	COMPUTER- LAPTOP	7V0BN52	7V0BN52	11/09/15
1	COMPUTER- DESKTOP REFRESH	9FR8V62	9FR8V62	11/19/15
1	COMPUTER- LAPTOP	BHMVM52	BHMVM52	11/19/15
1	COMPUTER- LAPTOP	1MX9P52	1MX9P52	11/19/15
1	COMPUTER- LAPTOP	1HY9P52	1HY9P52	11/19/15
1	COMPUTER- LAPTOP	20Z9P52	20Z9P52	11/19/15
1	COMPUTER- LAPTOP	3KX9P52	3KX9P52	11/19/15
1	COMPUTER- LAPTOP	1MR3P52	1MR3P52	11/20/15
1	COMPUTER- LAPTOP	GKR3P52	GKR3P52	11/20/15
1	COMPUTER- DESKTOP REFRESH	9BBV052	9BBV052	12/14/15
1	COMPUTER- LAPTOP	61BQP52	61BQP52	12/14/15

October 2021 Inventoried Surplus
Picked Up and Verified 09/14/2021 thru 10/18/2021

TOTAL ASSETS

1	COMPUTER- DESKTOP REFRESH	9DY4V62	9DY4V62	01/05/16
1	COMPUTER- LAPTOP	CRMN582	CRMN582	01/05/16
1	COMPUTER- LAPTOP	6QMN582	6QMN582	01/05/16
1	COMPUTER- LAPTOP	8QMN582	8QMN582	01/05/16
1	COMPUTER- LAPTOP	F3BP582	F3BP582	01/05/16
1	COMPUTER- LAPTOP	CSMN582	CSMN582	01/05/16
1	COMPUTER- LAPTOP	H3Y0682	H3Y0682	01/05/16
1	COMPUTER- LAPTOP	1TTB682	1TTB682	01/20/16
1	COMPUTER- LAPTOP	JVTB682	JVTB682	01/20/16
1	COMPUTER- LAPTOP	2KTB682	2KTB682	01/20/16
1	COMPUTER- LAPTOP	77LOC32	77LOC32	01/25/16
1	COMPUTER- DESKTOP REFRESH	1DNC082	1DNC082	02/12/16
1	COMPUTER- DESKTOP REFRESH	HS39182	HS39182	02/12/16
1	COMPUTER- DESKTOP REFRESH	C2S8V62	C2S8V62	02/22/16
1	COMPUTER- DESKTOP REFRESH	25H1M82	25H1M82	02/22/16
1	COMPUTER- DESKTOP REFRESH	C2V4V62	C2V4V62	02/22/16
1	COMPUTER- DESKTOP REFRESH	12Q8M82	12Q8M82	02/22/16
1	COMPUTER- DESKTOP REFRESH	3ZC9M82	3ZC9M82	02/22/16
1	COMPUTER- LAPTOP	BJLC982	BJLC982	03/03/16
1	COMPUTER- LAPTOP	9JLC982	9JLC982	03/03/16
1	COMPUTER- LAPTOP	3THM982	3THM982	03/03/16
1	COMPUTER- LAPTOP	DHTG982	DHTG982	03/14/16
1	COMPUTER- LAPTOP	7GTG982	7GTG982	03/14/16
1	COMPUTER- LAPTOP	DGTG982	DGTG982	03/14/16
1	COMPUTER- LAPTOP - REFRESH	81VWB82	81VWB82	03/23/16
1	COMPUTER- DESKTOP REFRESH	BXXX72	BXXX72	04/01/16
1	COMPUTER- DESKTOP REFRESH	BXW2Z72	BXW2Z72	04/01/16
1	COMPUTER- LAPTOP	DZHFB82	DZHFB82	04/12/16
1	COMPUTER- LAPTOP	4JVYC82	4JVYC82	04/26/16
1	COMPUTER- LAPTOP	8JVYC82	8JVYC82	04/26/16
1	COMPUTER- LAPTOP	BJVYC82	BJVYC82	04/26/16
1	COMPUTER- LAPTOP	DJVYC82	DJVYC82	04/26/16
1	COMPUTER- LAPTOP	JHVYC82	JHVYC82	04/26/16
1	COMPUTER- DESKTOP REFRESH	913ZY72	913ZY72	04/29/16
1	COMPUTER- LAPTOP	3M27782	3M27782	04/29/16
1	COMPUTER- LAPTOP	JM27782	JM27782	04/29/16
1	COMPUTER- LAPTOP	7K27782	7K27782	04/29/16
1	COMPUTER- LAPTOP	6M27782	6M27782	04/29/16
1	COMPUTER- LAPTOP	4337782	4337782	04/29/16
1	COMPUTER- LAPTOP	6337782	6337782	04/29/16
1	COMPUTER- LAPTOP	GK26782	GK26782	04/29/16
1	COMPUTER- LAPTOP	1H26782	1H26782	04/29/16
1	COMPUTER- LAPTOP	4F37782	4F37782	04/29/16
1	COMPUTER- LAPTOP	BR27782	BR27782	04/29/16
1	COMPUTER- LAPTOP	9J26782	9J26782	04/29/16
1	COMPUTER- LAPTOP	HH26782	HH26782	04/29/16
1	COMPUTER- LAPTOP	5L27782	5L27782	04/29/16
1	COMPUTER- LAPTOP	4437782	4437782	04/29/16
1	COMPUTER- LAPTOP	FM27782	FM27782	04/29/16
1	COMPUTER- LAPTOP	DL27782	DL27782	04/29/16
1	COMPUTER- LAPTOP	GS27782	GS27782	04/29/16

October 2021 Inventoried Surplus
Picked Up and Verified 09/14/2021 thru 10/18/2021

TOTAL ASSETS

1	COMPUTER- LAPTOP	1D37782	1D37782	04/29/16
1	COMPUTER- LAPTOP	6S27782	6S27782	04/29/16
1	COMPUTER- LAPTOP	GK16782	GK16782	04/29/16
1	COMPUTER- LAPTOP	GC37782	GC37782	04/29/16
1	COMPUTER- LAPTOP	JG26782	JG26782	04/29/16
1	COMPUTER- LAPTOP	3HHRD82	3HHRD82	05/10/16
1	COMPUTER- LAPTOP	33M4HB2	33M4HB2	05/19/16
1	COMPUTER- DESKTOP REFRESH	FJ2DD92	FJ2DD92	06/06/16
1	COMPUTER- LAPTOP	GPZKVB2	GPZKVB2	06/06/16
1	COMPUTER- LAPTOP	F179DC2	F179DC2	06/08/16
1	COMPUTER- LAPTOP - REFRESH	8GBYC82	8GBYC82	06/08/16
1	COMPUTER- LAPTOP - REFRESH	2DBYC82	2DBYC82	06/08/16
1	COMPUTER- LAPTOP - REFRESH	BGBYC82	BGBYC82	06/08/16
1	COMPUTER- LAPTOP - REFRESH	HFBYC82	HFBYC82	06/08/16
1	COMPUTER- LAPTOP - REFRESH	DLBYC82	DLBYC82	06/08/16
1	COMPUTER- LAPTOP - REFRESH	5JBYC82	5JBYC82	06/08/16
1	COMPUTER- LAPTOP - REFRESH	9JBYC82	9JBYC82	06/08/16
1	COMPUTER- LAPTOP - REFRESH	GGBYC82	GGBYC82	06/08/16
1	COMPUTER- LAPTOP - REFRESH	3DBYC82	3DBYC82	06/08/16
1	COMPUTER- LAPTOP - REFRESH	6HBYC82	6HBYC82	06/08/16
1	COMPUTER- LAPTOP - REFRESH	CFBYC82	CFBYC82	06/08/16
1	COMPUTER- LAPTOP - REFRESH	4CT5D82	4CT5D82	06/09/16
1	TEACHER LAPTOP	C3BNDC2	C3BNDC2	06/14/16
1	COMPUTER- LAPTOP - REFRESH	8G3TD82	8G3TD82	06/16/16
1	COMPUTER- LAPTOP - REFRESH	1Q2TD82	1Q2TD82	06/16/16
1	COMPUTER- LAPTOP - REFRESH	4J3TD82	4J3TD82	06/16/16
1	COMPUTER- LAPTOP - REFRESH	F4CZC82	F4CZC82	06/20/16
1	COMPUTER- LAPTOP - REFRESH	JVBZC82	JVBZC82	06/20/16
1	COMPUTER- LAPTOP - REFRESH	4XBZC82	4XBZC82	06/20/16
1	COMPUTER- DESKTOP REFRESH	4GSG8C2	4GSG8C2	06/28/16
1	COMPUTER- DESKTOP REFRESH	7SLTDB2	7SLTDB2	06/28/16
1	COMPUTER- LAPTOP - REFRESH	BNHRD82	BNHRD82	06/28/16
1	COMPUTER- DESKTOP REFRESH	7S5WDB2	7S5WDB2	06/30/16
1	COMPUTER- LAPTOP	FXF7GC2	FXF7GC2	06/30/16
1	COMPUTER- LAPTOP	FYF7GC2	FYF7GC2	06/30/16
1	COMPUTER- LAPTOP - REFRESH	5G52C82	5G52C82	06/30/16
1	COMPUTER- LAPTOP - REFRESH	7H52C82	7H52C82	06/30/16
1	COMPUTER- LAPTOP - REFRESH	9G52C82	9G52C82	06/30/16
1	COMPUTER- LAPTOP - REFRESH	FH52C82	FH52C82	06/30/16
1	COMPUTER- LAPTOP - REFRESH	9MH4VB2	9MH4VB2	06/30/16
1	COMPUTER- LAPTOP - REFRESH	JK41F82	JK41F82	07/13/16
1	COMPUTER- LAPTOP - REFRESH	8J41F82	8J41F82	07/13/16
1	COMPUTER- LAPTOP - REFRESH	3K41F82	3K41F82	07/13/16
1	COMPUTER- LAPTOP - REFRESH	9H41F82	9H41F82	07/13/16
1	COMPUTER- LAPTOP - REFRESH	7PKHYB2	7PKHYB2	07/26/16
1	COMPUTER- LAPTOP - REFRESH	1KFRD82	1KFRD82	07/27/16
1	COMPUTER- LAPTOP	2S04XB2	2S04XB2	07/29/16
1	COMPUTER- LAPTOP	3S04XB2	3S04XB2	07/29/16
1	COMPUTER- LAPTOP	BR04XB2	BR04XB2	07/29/16
1	COMPUTER- LAPTOP - REFRESH	18N8XB2	18N8XB2	08/12/16
1	COMPUTER- LAPTOP - REFRESH	2S9PZB2	2S9PZB2	08/29/16

October 2021 Inventoried Surplus
Picked Up and Verified 09/14/2021 thru 10/18/2021

TOTAL ASSETS

1	COMPUTER- LAPTOP - REFRESH	JJ9PZB2	JJ9PZB2	08/29/16
1	COMPUTER- LAPTOP - REFRESH	4L9PZB2	4L9PZB2	08/29/16
1	COMPUTER- LAPTOP - REFRESH	FQ9PZB2	FQ9PZB2	08/29/16
1	COMPUTER- LAPTOP - REFRESH	HP9PZB2	HP9PZB2	08/29/16
1	COMPUTER- LAPTOP - REFRESH	8H9PZB2	8H9PZB2	08/29/16
1	COMPUTER- LAPTOP - REFRESH	6R9PZB2	6R9PZB2	08/29/16
1	COMPUTER- LAPTOP - REFRESH	FM9PZB2	FM9PZB2	08/29/16
1	COMPUTER- LAPTOP - REFRESH	2K9PZB2	2K9PZB2	08/29/16
1	COMPUTER- LAPTOP - REFRESH	1L9PZB2	1L9PZB2	08/29/16
1	COMPUTER- LAPTOP - REFRESH	DP9PZB2	DP9PZB2	08/29/16
1	COMPUTER- LAPTOP - REFRESH	JL9PZB2	JL9PZB2	08/29/16
1	COMPUTER- LAPTOP - REFRESH	BQ9PZB2	BQ9PZB2	08/29/16
1	COMPUTER- LAPTOP - REFRESH	3Q9PZB2	3Q9PZB2	08/29/16
1	COMPUTER- LAPTOP - REFRESH	GQ9PZB2	GQ9PZB2	08/29/16
1	COMPUTER- LAPTOP - REFRESH	3M9PZB2	3M9PZB2	08/29/16
1	COMPUTER- LAPTOP - REFRESH	7H9PZB2	7H9PZB2	08/29/16
1	COMPUTER- LAPTOP - REFRESH	CR9PZB2	CR9PZB2	08/29/16
1	COMPUTER- LAPTOP - REFRESH	8Q9PZB2	8Q9PZB2	08/29/16
1	COMPUTER- LAPTOP - REFRESH	JR9PZB2	JR9PZB2	08/29/16
1	COMPUTER- LAPTOP - REFRESH	DR9PZB2	DR9PZB2	08/29/16
1	COMPUTER- LAPTOP - REFRESH	GN9PZB2	GN9PZB2	08/29/16
1	COMPUTER- LAPTOP - REFRESH	DM9PZB2	DM9PZB2	08/29/16
1	COMPUTER- LAPTOP - REFRESH	GK9PZB2	GK9PZB2	08/29/16
1	COMPUTER- LAPTOP - REFRESH	HQ9PZB2	HQ9PZB2	08/29/16
1	COMPUTER- LAPTOP - REFRESH	1R9PZB2	1R9PZB2	08/29/16
1	COMPUTER- LAPTOP - REFRESH	5M9PZB2	5M9PZB2	08/29/16
1	COMPUTER- LAPTOP - REFRESH	JK9PZB2	JK9PZB2	08/29/16
1	COMPUTER- LAPTOP	C79VZB2	C79VZB2	09/07/16
1	COMPUTER- LAPTOP - REFRESH	4FB70C2	4FB70C2	09/12/16
1	COMPUTER- LAPTOP - REFRESH	1GB70C2	1GB70C2	09/12/16
1	COMPUTER- LAPTOP - REFRESH	5FB70C2	5FB70C2	09/12/16
1	COMPUTER- LAPTOP - REFRESH	GFB70C2	GFB70C2	09/12/16
1	COMPUTER- LAPTOP - REFRESH	BGB70C2	BGB70C2	09/12/16
1	COMPUTER- LAPTOP - REFRESH	FFB70C2	FFB70C2	09/12/16
1	COMPUTER- LAPTOP - REFRESH	FGB70C2	FGB70C2	09/12/16
1	COMPUTER- LAPTOP - REFRESH	HFB70C2	HFB70C2	09/12/16
1	COMPUTER- LAPTOP - REFRESH	9FB70C2	9FB70C2	09/12/16
1	COMPUTER- LAPTOP - REFRESH	GGB70C2	GGB70C2	09/12/16
1	COMPUTER- LAPTOP - REFRESH	7FB70C2	7FB70C2	09/12/16
1	COMPUTER- LAPTOP - REFRESH	6GB70C2	6GB70C2	09/12/16
1	COMPUTER- LAPTOP	3LLFQC2	3LLFQC2	09/13/16
1	COMPUTER- LAPTOP	CKLFQC2	CKLFQC2	09/13/16
1	COMPUTER- LAPTOP	CCLYOC2	CCLYOC2	09/22/16
1	COMPUTER- LAPTOP	1FLYOC2	1FLYOC2	09/22/16
1	COMPUTER- LAPTOP	86BW1C2	86BW1C2	09/27/16
1	COMPUTER- LAPTOP	36BW1C2	36BW1C2	09/27/16
1	COMPUTER- LAPTOP	16BW1C2	16BW1C2	09/27/16
1	COMPUTER- LAPTOP	FDGCPC2	FDGCPC2	10/06/16
1	COMPUTER- LAPTOP - REFRESH	8N4X4C2	8N4X4C2	12/06/16
1	COMPUTER- DESKTOP REFRESH	HWDXMD2	HWDXMD2	02/14/17
1	COMPUTER- LAPTOP	4CJJZD2	4CJJZD2	02/14/17

October 2021 Inventoried Surplus
Picked Up and Verified 09/14/2021 thru 10/18/2021

TOTAL ASSETS

1	COMPUTER- LAPTOP	4DJJZD2	4DJJZD2	02/14/17
1	COMPUTER- LAPTOP	5CJJZD2	5CJJZD2	02/14/17
1	COMPUTER- LAPTOP	6LJJZD2	6LJJZD2	02/14/17
1	COMPUTER- LAPTOP	9CJJZD2	9CJJZD2	02/14/17
1	COMPUTER- LAPTOP	9KJJZD2	9KJJZD2	02/14/17
1	COMPUTER- LAPTOP	JBJJZD2	JBJJZD2	02/14/17
1	COMPUTER- LAPTOP	8401YD2	8401YD2	02/14/17
1	COMPUTER- LAPTOP - REFRESH	B2FF1F2	B2FF1F2	03/08/17
1	COMPUTER- LAPTOP - REFRESH	J3FF1F2	J3FF1F2	03/08/17
1	COMPUTER- LAPTOP - REFRESH	25FF1F2	25FF1F2	03/08/17
1	COMPUTER- LAPTOP - REFRESH	65FF1F2	65FF1F2	03/08/17
1	COMPUTER- LAPTOP - REFRESH	6Y9M1F2	6Y9M1F2	03/15/17
1	COMPUTER- LAPTOP - REFRESH	C6DM1F2	C6DM1F2	03/15/17
1	COMPUTER- LAPTOP - REFRESH	449X1F2	449X1F2	04/11/17
1	COMPUTER- LAPTOP	GTJ81F2	GTJ81F2	05/04/17
1	COMPUTER- LAPTOP - REFRESH	D2FF1F2	D2FF1F2	05/04/17
1	COMPUTER- LAPTOP - REFRESH	H2FF1F2	H2FF1F2	05/04/17
1	COMPUTER- LAPTOP	CX7H5F2	CX7H5F2	06/01/17
1	COMPUTER- LAPTOP REFRESH	5HQR5F2	5HQR5F2	06/14/17
1	COMPUTER- LAPTOP REFRESH	2B7H5F2	2B7H5F2	07/25/17
1	COMPUTER- DESKTOP	BS8NKH2	BS8NKH2	08/10/17
1	COMPUTER- LAPTOP REFRESH	C9P4RJ2	C9P4RJ2	11/15/17
1	COMPUTER- LAPTOP REFRESH	F9P4RJ2	F9P4RJ2	11/15/17
1	COMPUTER- LAPTOP REFRESH	6BTDSJ2	6BTDSJ2	11/30/17
1	COMPUTER- LAPTOP REFRESH	4TFX4M2	4TFX4M2	01/04/18
1	COMPUTER- LAPTOP REFRESH	JP6SVJ2	JP6SVJ2	01/04/18
1	COMPUTER- LAPTOP REFRESH	F48SVJ2	F48SVJ2	01/04/18
1	COMPUTER- LAPTOP REFRESH	548SVJ2	548SVJ2	01/04/18
1	COMPUTER- LAPTOP	2L473L2	2L473L2	02/01/18
1	COMPUTER- LAPTOP	HP473L2	HP473L2	02/01/18
1	COMPUTER- LAPTOP	38473L2	38473L2	02/01/18
1	COMPUTER- LAPTOP	6Y473L2	6Y473L2	02/01/18
1	COMPUTER- LAPTOP	H6473L2	H6473L2	02/01/18
1	COMPUTER- LAPTOP	7M473L2	7M473L2	02/01/18
1	COMPUTER- LAPTOP	8Z473L2	8Z473L2	02/01/18
1	COMPUTER- LAPTOP	3L473L2	3L473L2	02/01/18
1	COMPUTER- LAPTOP	D5473L2	D5473L2	02/01/18
1	COMPUTER- LAPTOP	9B473L2	9B473L2	02/01/18
1	COMPUTER- LAPTOP	C5473L2	C5473L2	02/01/18
1	COMPUTER- LAPTOP	28473L2	28473L2	02/05/18
1	COMPUTER- LAPTOP	6K473L2	6K473L2	02/05/18
1	COMPUTER- LAPTOP	G9473L2	G9473L2	02/05/18
1	COMPUTER- LAPTOP	6B473L2	6B473L2	02/05/18
1	COMPUTER- LAPTOP	66473L2	66473L2	02/05/18
1	COMPUTER- LAPTOP	H7473L2	H7473L2	02/05/18
1	COMPUTER- LAPTOP	7B473L2	7B473L2	02/05/18
1	COMPUTER- LAPTOP	C7473L2	C7473L2	02/05/18
1	COMPUTER- LAPTOP	8K473L2	8K473L2	02/05/18
1	COMPUTER- LAPTOP REFRESH	5H8V2K2	5H8V2K2	02/06/18
1	COMPUTER- LAPTOP REFRESH	JM8V2K2	JM8V2K2	02/06/18
1	COMPUTER- LAPTOP REFRESH	CK8V2K2	CK8V2K2	02/06/18

October 2021 Inventoried Surplus
Picked Up and Verified 09/14/2021 thru 10/18/2021

TOTAL ASSETS

1	COMPUTER- DESKTOP REFRESH	BVGYN2	BVGYN2	04/12/18
1	COMPUTER- LAPTOP REFRESH	BWZ28L2	BWZ28L2	04/24/18
1	COMPUTER- LAPTOP REFRESH	JWZ28L2	JWZ28L2	04/24/18
1	COMPUTER- LAPTOP REFRESH	4ZD5BL2	4ZD5BL2	06/18/18
1	COMPUTER- LAPTOP REFRESH	FYD5BL2	FYD5BL2	06/18/18
1	COMPUTER- LAPTOP REFRESH	1QH5BL2	1QH5BL2	06/18/18
1	COMPUTER- LAPTOP REFRESH	7JG5BL2	7JG5BL2	06/18/18
1	COMPUTER- LAPTOP REFRESH	7KG5BL2	7KG5BL2	06/18/18
1	COMPUTER- LAPTOP REFRESH	9HG5BL2	9HG5BL2	06/18/18
1	COMPUTER- LAPTOP REFRESH	BJG5BL2	BJG5BL2	06/18/18
1	COMPUTER- LAPTOP REFRESH	CPH5BL2	CPH5BL2	06/18/18
1	COMPUTER- LAPTOP REFRESH	FHG5BL2	FHG5BL2	06/18/18
1	COMPUTER- LAPTOP REFRESH	FPH5BL2	FPH5BL2	06/18/18
1	COMPUTER- LAPTOP REFRESH	89LPCL2	89LPCL2	07/24/18
1	COMPUTER- LAPTOP	H6JQXN2	H6JQXN2	10/25/18
1	COMPUTER- LAPTOP	5JHQXN2	5JHQXN2	10/25/18
1	COMPUTER- LAPTOP	FJHQXN2	FJHQXN2	10/25/18
1	COMPUTER- LAPTOP	4JHQXN2	4JHQXN2	10/25/18
1	COMPUTER- LAPTOP	9DTT4P2	9DTT4P2	02/07/19
1	COMPUTER- LAPTOP	4CTT4P2	4CTT4P2	02/07/19
1	COMPUTER- LAPTOP	2CTT4P2	2CTT4P2	02/07/19
1	COMPUTER- LAPTOP	BDTT4P2	BDTT4P2	02/07/19
1	COMPUTER- LAPTOP	1CTT4P2	1CTT4P2	02/07/19
1	COMPUTER- LAPTOP	3ZYT4P2	3ZYT4P2	02/07/19
1	COMPUTER- LAPTOP	31ZT4P2	31ZT4P2	02/07/19
1	COMPUTER- LAPTOP	GQ865P2	GQ865P2	02/11/19
1	COMPUTER- LAPTOP	FP865P2	FP865P2	02/11/19
1	COMPUTER- LAPTOP	8Q865P2	8Q865P2	02/11/19
1	COMPUTER- LAPTOP	7FZB5P2	7FZB5P2	03/12/19
1	COMPUTER- LAPTOP	2NFFDT2	2NFFDT2	03/26/19
1	COMPUTER- TEACHER LAPTOP - REFRESH	1S0BPV2	1S0BPV2	06/10/19
1	COMPUTER- TEACHER LAPTOP - REFRESH	1B6GNV2	1B6GNV2	06/10/19
1	COMPUTER- TEACHER LAPTOP - REFRESH	DCKDNV2	DCKDNV2	06/10/19
1	COMPUTER- TEACHER LAPTOP - REFRESH	8ZZHNV2	8ZZHNV2	06/10/19
1	COMPUTER- LAPTOP - REFRESH	6S6GZZ2	6S6GZZ2	07/29/20
1	COMPUTER- DESKTOP	7CRW7B3	7CRW7B3	03/02/21
1	PROJECTOR- VIDEO	1680575	F3HG561139F	09/01/05
1	PROJECTOR- VIDEO	1680576	F3HG561140F	09/01/05
1	PROJECTOR- VIDEO	1809697	GYSF650583L	06/14/06
1	PROJECTOR- VIDEO	1879522	GYSF6Y0467L	12/01/06
1	PROJECTOR- VIDEO	1902440	GYSF6Y0457L	12/01/06
1	PROJECTOR- VIDEO	1879520	GYSF6Y0445L	12/01/06
1	PROJECTOR- VIDEO	1869271	GYSF6Y0120L	01/02/07
1	POWERLITE 98H, XGA, 3000 LUMENS PROJECTO	1945797	VTAK5Z00762	02/19/16
1	COMPUTER- LAPTOP	1976611	5CD016BZGW	08/27/20
1	COMPUTER- LAPTOP	1976634	5CD016BXXQ	08/27/20
1	COMPUTER- LAPTOP	1976643	5CD016BYHD	08/27/20
1	COMPUTER- LAPTOP	1976649	5CD016BYK6	08/27/20
1	COMPUTER- LAPTOP	1976691	5CD016COHG	08/27/20
1	COMPUTER- LAPTOP	1976697	5CD016COLJ	08/27/20
1	COMPUTER- LAPTOP	1976710	5CD016BZHT	08/27/20

October 2021 Inventoried Surplus
Picked Up and Verified 09/14/2021 thru 10/18/2021

TOTAL ASSETS

1	COMPUTER- LAPTOP	1976713	5CD016BYFF	08/27/20
1	COMPUTER- LAPTOP	1976719	5CD01680CL	08/27/20
1	COMPUTER- LAPTOP	1976720	5CD016BYQB	08/27/20
1	COMPUTER- LAPTOP	1976724	5CD016BZ8D	08/27/20
1	COMPUTER- LAPTOP	1976732	5CD016BZX5	08/27/20
1	COMPUTER- LAPTOP	1976733	5CD01685BD	08/27/20
1	COMPUTER- LAPTOP	1976888	5CD0165FL2	08/27/20
1	COMPUTER- LAPTOP	1976905	5CD0165FJV	08/27/20
1	COMPUTER- LAPTOP	1976927	5CD0165FCJ	08/27/20
1	COMPUTER- LAPTOP	1976947	5CD016BZHM	08/27/20
1	COMPUTER- LAPTOP	1976948	5CD0165CLM	08/27/20
1	COMPUTER- LAPTOP	1976950	5CD0165FFG	08/27/20
1	COMPUTER- LAPTOP	1976954	5CD0165GJ8	08/27/20
1	COMPUTER- LAPTOP	1976963	5CD016BZ28	08/27/20
1	COMPUTER- LAPTOP	1976968	5CD016BYKM	08/27/20
1	COMPUTER- LAPTOP	1976971	5CD01684CQ	08/27/20
1	COMPUTER- LAPTOP	1976972	5CD016BZ2Q	08/27/20
1	COMPUTER- LAPTOP	1976977	5CD016BXW1	08/27/20
1	COMPUTER- LAPTOP	1976981	5CD016BZ26	08/27/20
1	COMPUTER- LAPTOP	1976982	5CD016BZ2D	08/27/20
1	COMPUTER- LAPTOP	1976985	5CD016BZ2N	08/27/20
1	COMPUTER- LAPTOP	1976987	5CD016BYZ3	08/27/20
1	COMPUTER- LAPTOP	1976992	5CD016BYXV	08/27/20
1	COMPUTER- LAPTOP	1976995	5CD016BZ2S	08/27/20
1	COMPUTER- LAPTOP	1976996	5CD016BYK	08/27/20
1	COMPUTER- LAPTOP	1977000	5CD016BZ1P	08/27/20
1	COMPUTER- LAPTOP	1977001	5CD016BYX6	08/27/20
1	COMPUTER- LAPTOP	1977004	5CD016BXVB	08/27/20
1	COMPUTER- LAPTOP	1977005	5CD0167448	08/27/20
1	COMPUTER- LAPTOP	1977011	5CD016BYJ6	08/27/20
1	COMPUTER- LAPTOP	1977016	5CD016BYZC	08/27/20
1	COMPUTER- LAPTOP	1977017	5CD016BYYG	08/27/20
1	COMPUTER- LAPTOP	1977021	5CD016BZ2P	08/27/20
1	COMPUTER- LAPTOP	1977023	5CD016BYKN	08/27/20
1	COMPUTER- LAPTOP	1977028	5CD016821W	08/27/20
1	COMPUTER- LAPTOP	1977034	5CD016BXW0	08/27/20
1	COMPUTER- LAPTOP	1977080	5CD0165GFS	08/27/20
1	COMPUTER- LAPTOP	1977081	5CD0160DD5	08/27/20
1	COMPUTER- LAPTOP	1977085	5CD016BXWF	08/27/20
1	COMPUTER- LAPTOP	1977092	5CD0160H67	08/27/20
1	COMPUTER- LAPTOP	1977096	5CD0165DYZ	08/27/20
1	COMPUTER- LAPTOP	1977097	5CD0165GHC	08/27/20
1	COMPUTER- LAPTOP	1977099	5CD0168202	08/27/20
1	COMPUTER- LAPTOP	1977101	5CD01685G7	08/27/20
1	COMPUTER- LAPTOP	1977107	5CD016825V	08/27/20
1	COMPUTER- LAPTOP	1977108	5CD016820S	08/27/20
1	COMPUTER- LAPTOP	1977112	5CD0165DW6	08/27/20
1	COMPUTER- LAPTOP	1977118	5CD0165CKP	08/27/20
1	COMPUTER- LAPTOP	1977122	5CD0165DRW	08/27/20
1	COMPUTER- LAPTOP	1977126	5CD01681WD	08/27/20
1	COMPUTER- LAPTOP	1977127	5CD01681X8	08/27/20

October 2021 Inventoried Surplus
Picked Up and Verified 09/14/2021 thru 10/18/2021

TOTAL ASSETS

1	COMPUTER- LAPTOP	1977130	5CD0165CRM	08/27/20
1	COMPUTER- LAPTOP	1977134	5CD01681XN	08/27/20
1	COMPUTER- LAPTOP	1977135	5CD01683YR	08/27/20
1	COMPUTER- LAPTOP	1977294	5CD01684HR	08/27/20
1	COMPUTER- LAPTOP	1977328	5CD0165GBR	08/27/20
1	COMPUTER- LAPTOP	1977337	5CD0165BH7	08/27/20
1	PROJECTOR- VIDEO	1657567	RT3I000098	10/02/03
1	ULTIMATE FIELD PA SYSTEM	1902076	UCCRL01051	10/11/11
1	PROJECTOR- VIDEO	1874653	0012746	08/12/09
1	PROJECTOR- VIDEO	1878659	0011087	08/18/09
1	PROJECTOR- VIDEO	1884544	0023832	03/01/10
1	PROJECTOR- VIDEO	1884409	0023612	03/08/10
1	PROJECTOR- VIDEO	1884895	0024860	03/09/10
1	PROJECTOR- VIDEO	1889461	8011634	06/21/10
1	PROJECTOR- VIDEO	1899994	3014328	08/16/11
1	PROJECTOR- VIDEO	1674503	5100731UR	02/23/05
1	XGA 6500 LUMES DUAL LAMP, 2000:1 CR	1910173		10/26/12
1	STUDENT RESPONSE SYSTEM	1881805		04/21/09
1	SCREEN/DEVICE- INTERACTIVE WHITE BOARD	1899452	C1104140332	06/28/11
1	TELEVISION HEADEND & REMOTE RETURN UNIT	1671007		10/25/04
1	MASTER DUPLICATOR- ELECTRIC	1944885	D225Z500025	09/14/15
1	MASTER DUPLICATOR- ELECTRIC	1948185	D265ZB00250	06/06/16
1	STUDENT RESPONSE SYSTEM	1919376		05/29/14
1	STUDENT RESPONSE SYSTEM - REFRESH	1927658		01/23/15
1	STUDENT RESPONSE SYSTEM - REFRESH	1939439		06/15/15
1	STUDENT RESPONSE SYSTEM - REFRESH	1958894		06/15/15
1	STUDENT RESPONSE SYSTEM - REFRESH	1940535		06/25/15
1	STUDENT RESPONSE SYSTEM - REFRESH	1940536		06/25/15
1	STUDENT RESPONSE SYSTEM - REFRESH	1940537		06/25/15
1	STUDENT RESPONSE SYSTEM - REFRESH	1940539		06/25/15
1	STUDENT RESPONSE SYSTEM - REFRESH	1940540		06/25/15
1	STUDENT RESPONSE SYSTEM - REFRESH	1940541		06/25/15
1	STUDENT RESPONSE SYSTEM - REFRESH	1940543		06/25/15
1	STUDENT RESPONSE SYSTEM - REFRESH	1940544		06/25/15
1	STUDENT RESPONSE SYSTEM - REFRESH	1940546		06/25/15
1	STUDENT RESPONSE SYSTEM - REFRESH	1940547		06/25/15
1	STUDENT RESPONSE SYSTEM - REFRESH	1940548		06/25/15
1	STUDENT RESPONSE SYSTEM - REFRESH	1940549		06/25/15
1	STUDENT RESPONSE SYSTEM - REFRESH	1940550		06/25/15
1	STUDENT RESPONSE SYSTEM - REFRESH	1940551		06/25/15
1	STUDENT RESPONSE SYSTEM - REFRESH	1940552		06/25/15
1	STUDENT RESPONSE SYSTEM - REFRESH	1940553		06/25/15
1	STUDENT RESPONSE SYSTEM - REFRESH	1940554		06/25/15
1	STUDENT RESPONSE SYSTEM - REFRESH	1940555		06/25/15
1	STUDENT RESPONSE SYSTEM - REFRESH	1940557		06/25/15
1	STUDENT RESPONSE SYSTEM - REFRESH	1940559		06/25/15
1	STUDENT RESPONSE SYSTEM - REFRESH	1940560		06/25/15
1	STUDENT RESPONSE SYSTEM - REFRESH	1940561		06/25/15
1	STUDENT RESPONSE SYSTEM - REFRESH	1940562		06/25/15
1	STUDENT RESPONSE SYSTEM - REFRESH	1940563		06/25/15
1	STUDENT RESPONSE SYSTEM - REFRESH	1940564		06/25/15

October 2021 Inventoried Surplus
Picked Up and Verified 09/14/2021 thru 10/18/2021

TOTAL ASSETS

1	STUDENT RESPONSE SYSTEM - REFRESH	1940565		06/25/15
1	STUDENT RESPONSE SYSTEM - REFRESH	1940566		06/25/15
1	STUDENT RESPONSE SYSTEM - REFRESH	1940567		06/25/15
1	STUDENT RESPONSE SYSTEM - REFRESH	1940568		06/25/15
1	STUDENT RESPONSE SYSTEM - REFRESH	1940569		06/25/15
1	STUDENT RESPONSE SYSTEM - REFRESH	1940570		06/25/15
1	STUDENT RESPONSE SYSTEM - REFRESH	1940571		06/25/15
1	STUDENT RESPONSE SYSTEM - REFRESH	1940574		06/25/15
1	STUDENT RESPONSE SYSTEM - REFRESH	1940576		06/25/15
1	STUDENT RESPONSE SYSTEM - REFRESH	1940451		06/25/15
1	STUDENT RESPONSE SYSTEM - REFRESH	1940453		06/25/15
1	STUDENT RESPONSE SYSTEM - REFRESH	1940454		06/25/15
1	STUDENT RESPONSE SYSTEM - REFRESH	1940455		06/25/15
1	STUDENT RESPONSE SYSTEM - REFRESH	1940456		06/25/15
1	STUDENT RESPONSE SYSTEM - REFRESH	1940464		06/25/15
1	STUDENT RESPONSE SYSTEM - REFRESH	1940465		06/25/15
1	STUDENT RESPONSE SYSTEM - REFRESH	1940467		06/25/15
1	STUDENT RESPONSE SYSTEM - REFRESH	1940468		06/25/15
1	STUDENT RESPONSE SYSTEM - REFRESH	1940469		06/25/15
1	STUDENT RESPONSE SYSTEM - REFRESH	1940477		06/25/15
1	STUDENT RESPONSE SYSTEM - REFRESH	1940479		06/25/15
1	STUDENT RESPONSE SYSTEM - REFRESH	1940483		06/25/15
1	STUDENT RESPONSE SYSTEM - REFRESH	1940484		06/25/15
1	STUDENT RESPONSE SYSTEM - REFRESH	1940485		06/25/15
1	STUDENT RESPONSE SYSTEM	1940373		06/30/15
1	STUDENT RESPONSE SYSTEM	1940374		06/30/15
1	STUDENT RESPONSE SYSTEM	1940375		06/30/15
1	STUDENT RESPONSE SYSTEM	1940376		06/30/15
1	STUDENT RESPONSE SYSTEM	1940377		06/30/15
1	STUDENT RESPONSE SYSTEM	1940378		06/30/15
1	STUDENT RESPONSE SYSTEM	1940379		06/30/15
1	STUDENT RESPONSE SYSTEM	1940380		06/30/15
1	STUDENT RESPONSE SYSTEM	1940381		06/30/15
1	STUDENT RESPONSE SYSTEM	1940382		06/30/15
1	STUDENT RESPONSE SYSTEM	1940383		06/30/15
1	STUDENT RESPONSE SYSTEM	1940385		06/30/15
1	STUDENT RESPONSE SYSTEM	1940386		06/30/15
1	STUDENT RESPONSE SYSTEM	1940391		06/30/15
1	STUDENT RESPONSE SYSTEM	1940393		06/30/15
1	STUDENT RESPONSE SYSTEM	1940394		06/30/15
1	STUDENT RESPONSE SYSTEM	1940395		06/30/15
1	STUDENT RESPONSE SYSTEM	1940397		06/30/15
1	STUDENT RESPONSE SYSTEM	1954420		02/27/17
1	STUDENT RESPONSE SYSTEM	1954003		02/27/17
1	STUDENT RESPONSE SYSTEM	1954005		02/27/17
1	STUDENT RESPONSE SYSTEM	1954008		02/27/17
1	STUDENT RESPONSE SYSTEM	1954009		02/27/17
1	STUDENT RESPONSE SYSTEM	1954010		02/27/17
1	STUDENT RESPONSE SYSTEM	1954011		02/27/17
1	STUDENT RESPONSE SYSTEM	1954013		02/27/17
1	STUDENT RESPONSE SYSTEM	1951987		02/27/17

October 2021 Inventoried Surplus
Picked Up and Verified 09/14/2021 thru 10/18/2021

TOTAL ASSETS

1	STUDENT RESPONSE SYSTEM	1951989		02/27/17
1	STUDENT RESPONSE SYSTEM	1951990		02/27/17
1	STUDENT RESPONSE SYSTEM	1951991		02/27/17
1	STUDENT RESPONSE SYSTEM	1951992		02/27/17
1	COMPUTER- LAPTOP	1977921	3VVK9FAN901008	10/01/20
1	COMPUTER- LAPTOP	1978081	3VVK9FCN904508	10/01/20
1	COMPUTER- LAPTOP	1978178	3VVK9FCN904102	10/01/20
1	COMPUTER- LAPTOP	1978192	3VVK9FCN903944	10/01/20
1	COMPUTER- LAPTOP	1979607	3VVK9FCN903475	10/01/20
1	COMPUTER- LAPTOP	1978733	3VVK9FCN900722	10/01/20
1	COMPUTER- LAPTOP	1979191	3VVK9FAN902107	10/01/20
1	COMPUTER- LAPTOP	1978285	3VVK9FCN904007	10/01/20
1	COMPUTER- LAPTOP	1978320	3VVK9FAN902166	10/01/20
1	COMPUTER- LAPTOP	1979412	3VVK9FAN900269	10/01/20
1	COMPUTER- LAPTOP	1978583	3VVK9FCN903293	10/01/20
1	COMPUTER- LAPTOP	1979533	3VVK9FCN903343	10/01/20
1	COMPUTER- LAPTOP	1979280	3VVK9FCN901087	10/01/20
1	COMPUTER- LAPTOP	1978994	3VVK9FDN902829	10/01/20
1	COMPUTER- LAPTOP	1978959	3VVK9FDN807080	10/01/20
1	COMPUTER- LAPTOP	1978875	3VVK9FDN806990	10/01/20
1	COMPUTER- LAPTOP	1978843	3VVK9FDN807340	10/01/20
1	COMPUTER- LAPTOP	1978822	3VVK9FDN807047	10/01/20
1	SCREEN/DEVICE-INTERACTIVE WHITE BOARD	1840242	SB660-R1-177946	08/20/07
1	COPIER	1815803	CQI617829	12/19/06
1	PROJECTOR- VIDEO	1871615	31110080	10/04/07
1	PROJECTOR- VIDEO	1869186	97599522	12/01/08
1	COPIER	1888872	CCC012769	05/13/10
1	COPIER	1888933	CQB020873	06/15/10
1	COPIER	1897502	CQA135370	04/12/11
1	COPIER	1897505	CQA135364	04/12/11
1	COPIER	1897506	CQK031922	04/12/11
1	COPIER	1898217	CCA115782	04/22/11
1	COPIER	1897216	CQL033816	04/22/11
1	COPIER	1904142	CCG117517	10/04/11
1	COPIER	1920971	CZK214153	03/05/13
1	COPIER	1912824	CZL214628	04/01/13
1	COPIER	1934840	CAJD16329	01/16/15
1	COPIER	1937082	CALD17671	02/13/15
1	COPIER	1937086	CELD49041	02/13/15
1	COPIER	1937244	CALD18515	03/10/15
1	COPIER	1943008	CEKD93154	04/16/15
1	COPIER	1937613	CALD18461	04/16/15
1	COPIER	1943705	CAAE18727	06/30/15
1	COPIER	1944535	CAGE24061	08/24/15
1	COPIER	1944537	CADE21911	08/25/15
1	COPIER	1944536	CADE21884	08/25/15
1	COPIER	1944538	CADE21889	08/25/15
1	COPIER	1946185	CEFE23248	08/25/15
1	COPIER	1943697	CAHE25188	09/28/15
1	COPIER	1945099	CAGE24725	10/06/15
1	COPIER	1943674	CEGE26417	10/27/15

October 2021 Inventoried Surplus
Picked Up and Verified 09/14/2021 thru 10/18/2021

TOTAL ASSETS

1	COPIER	1943673	CAGE25042	10/27/15
1	COPIER	1945624	CAIE26621	12/08/15
1	COPIER	1947602	CAJE27697	01/15/16
1	COPIER	1951577	CEKE44899	01/20/16
1	COPIER	1951550	CAKE28678	01/20/16
1	COPIER	1947597	CALE29500	03/07/16
1	COPIER	1947775	CAAF30987	05/04/16
1	COPIER	1947958	CABF31490	05/05/16
1	COPIER	1948286	CAAF30512	05/12/16
1	CS COBB COUNTY PUBLIC SCHOOLS NSP 001338	1830977	CHS400859S	01/20/12
TOTAL TECHNOLOGY - 1,793				

INSTRUCTIONAL TECHNOLOGY

1	0210-INST-SPECIAL EDUCATION	1576675	911313700	01/01/00
TOTAL INSTRUCTIONAL TECHNOLOGY - 1				

MAINTENANCE

1	BUFFING MACHINE- HIGH SPEED	1597959	1422877	02/01/01
TOTAL MAINTENANCE - 1				

FY 2022 YTD Surplus Sales Revenue

Date	Item GOVDEALS.COM	Gross Sales Price	Actual Revenue
7/26/2021	PASS THRU FRIDGE	\$ 31.98	\$ 25.00
8/19/2021	MIXER	\$ 3,250.00	\$ 3,168.75
8/19/2021	STEAMER	\$ 430.00	\$ 419.25
8/19/2021	FOOD DISPLAY	\$ 102.00	\$ 97.00
8/19/2021	REFRIGERATOR	\$ 125.00	\$ 120.00
8/19/2021	FOOD COUNTER	\$ 102.00	\$ 97.00
8/25/2021	REFRIGERATOR	\$ 53.30	\$ 45.00
Subtotal Online Sales		\$ 4,094.28	\$ 3,972.00
Auction/Misc			
7/15/2021	SA RECYCLING	\$ 574.56	\$ 574.56
7/15/2021	DEB HILL HGTV	\$ 80.00	\$ 80.00
7/15/2021	PREMIER	\$ 1,028.00	\$ 1,028.00
7/15/2021	SA RECYCLING	\$ 327.24	\$ 327.24
7/15/2021	CW AUSTIN	\$ 77.90	\$ 77.90
7/15/2021	BRANDON LEDBETTER	\$ 75.00	\$ 75.00
7/26/2021	SA RECYCLING (FLEET)	\$ 511.20	\$ 511.20
7/26/2021	SA RECYCLING	\$ 332.91	\$ 332.91
7/26/2021	COPART	\$ 1,086.00	\$ 1,086.00
7/26/2021	COPART	\$ 8,077.00	\$ 8,077.00
7/26/2021	COPART	\$ 6,330.00	\$ 6,330.00
8/19/2021	SA RECYCLING	\$ 1,255.50	\$ 1,255.50
8/19/2021	SA RECYCLING	\$ 367.95	\$ 367.95
8/19/2021	COPART	\$ 136.00	\$ 136.00
8/19/2021	CW AUSTIN	\$ 215.74	\$ 215.74
8/19/2021	MILLENNIUM PALLETS	\$ 286.00	\$ 286.00
8/25/2021	KEVIN LONG	\$ 10.00	\$ 10.00
8/25/2021	SA RECYCLING	\$ 435.20	\$ 435.20
8/25/2021	SA RECYCLING	\$ 1,798.60	\$ 1,798.60
9/8/2021	SA RECYCLING	\$ 221.80	\$ 221.80
9/8/2021	PREMIER	\$ 5,538.70	\$ 5,538.70
9/8/2021	CHLOE MOBLEY	\$ 60.00	\$ 60.00
9/8/2021	CURTIS EVANS	\$ 50.00	\$ 50.00
9/23/2021	SA RECYCLING	\$ 1,105.10	\$ 1,105.10
9/23/2021	SA RECYCLING	\$ 309.60	\$ 309.60
9/23/2021	CW AUSTIN	\$ 51.40	\$ 51.40
9/24/2021	SA RECYCLING (FLEET)	\$ 1,144.20	\$ 1,144.20
9/24/2021	SA RECYCLING (FLEET)	\$ 772.20	\$ 772.20
9/24/2021	SA RECYCLING (FLEET)	\$ 1,602.00	\$ 1,602.00
9/24/2021	SA RECYCLING (FLEET)	\$ 3,225.60	\$ 3,225.60
9/24/2021	SA RECYCLING (FLEET)	\$ 380.40	\$ 380.40
10/4/2021	CW AUSTIN	\$ 37.90	\$ 37.90
10/4/2021	SA RECYCLING	\$ 212.00	\$ 212.00
10/4/2021	SA RECYCLING	\$ 375.20	\$ 375.20
10/4/2021	SA RECYCLING	\$ 518.40	\$ 518.40
10/4/2021	PREMIER	\$ 3,366.00	\$ 3,366.00
10/4/2021	ORANGE CONE PRODUCTIONS	\$ 910.00	\$ 910.00

FY 2022 YTD Surplus Sales Revenue

Date	Item GOVDEALS.COM	Gross Sales Price	Actual Revenue
10/12/2021	CYNTHIA FLEMING	\$ 70.00	\$ 70.00
10/12/2021	DONNA WALLIS	\$ 70.00	\$ 70.00
10/18/2021	LYNDA ENTSMENGER	\$ 35.00	\$ 35.00
10/18/2021	ARCH CONSTRUCTION SERVICES	\$ 600.00	\$ 600.00
10/18/2021	KATHLEEN LOVETT	\$ 60.00	\$ 60.00
10/19/2021	SA RECYCLING	\$ 292.00	\$ 292.00
10/19/2021	SA RECYCLING	\$ 183.20	\$ 183.20
Total All Surplus Sales		\$ 48,289.78	\$ 48,167.50

**Surplus Furniture and Equipment for Auction or Disposal
as of 10/18/2021**

#	Description	Qty	Unit	Explanation
1	Misc Furniture	1,600	ea	Damaged/Obsolete - reviewed by Warehouse Staff
2	Non-Inventoried Misc Equipment	50	pallets	Damaged/Obsolete - reviewed by Warehouse Staff
3	Non-Inventoried FNS Equipment	10	pallets	Damaged/Obsolete - reviewed by FNS
4	Inventoried Technology**	1,793	ea	Damaged/Obsolete - reviewed by Technology Dept
5	Inventoried Maintenance**	1	ea	Damaged/Obsolete - reviewed by Maintenance
6	Inventoried Athletics	3	ea	Damaged/Obsolete - reviewed by Athletics
7	Inventoried Food and Nutrition**	3	ea	Damaged/Obsolete - reviewed by FNS
8	Textbooks/Media Center Books	150	pallets	Off Adoption/Obsolete - reviewed by T&L
9	Misc Instructional Tech	1	ea	Damaged/Obsolete - reviewed by Technology Dept
10	Transportation/Fleet	0	ea	Damaged/Obsolete - reviewed by Fleet Maintenance
11	Portables	0	ea	Damaged/Obsolete - reviewed by SPLOST

** Detail on file in the Superintendent's office

**COBB COUNTY BOARD OF EDUCATION
AGENDA ITEM
November 11, 2021**

TOPIC:

AGENDA ITEM #2 – Recommendation to Amend the Lease Agreements with SBA Monarch Towers I, LLC., for Cell Towers at North Cobb High School, Walton High School, and Floyd Middle School

BACKGROUND/RATIONALE:

Cobb County School District and T-Mobile South, LLC. entered into cell tower lease agreements in August 2008, at North Cobb High School, Walton High School, and Floyd Middle School. These lease agreements will expire August 2023. Lease agreements for these three sites will be extended with new revenue terms. The new revenue will increase by 15% for each successive five-year term.

SUPERINTENDENT’S RECOMMENDATION:

Approve the amendments to lease agreements with SBA Monarch Towers I, LLC., for the cell towers at North Cobb High School, Walton High School, and Floyd Middle School.

COST:

No cost

DATA SOURCE:

Marc Smith
Nick Parker
Board Attorney

**COBB COUNTY BOARD OF EDUCATION
AGENDA ITEM
November 11, 2021**

TOPIC:

AGENDA ITEM #3 – Recommendation for Approval of a Temporary Construction Easement and a Permanent Sewer Easement with Michael Holt at Dowell Elementary School

BACKGROUND/RATIONALE:

Michael Holt is requesting a temporary construction easement, approximately 4,176 square feet. Once construction is complete Michael Holt is requesting a permanent sewer easement. This permanent easement would be 104.4 linear feet and 20 feet in width, for an approximate total of 2,088 square feet. They are offering Fair Market Value of \$3,900.00 for the Permanent Sanitary Sewer Line Easement.

SUPERINTENDENT'S RECOMMENDATION:

Approve the recommendation for the temporary construction easement and permanent sewer easement with Michael Holt at Dowell Elementary School.

COST:

No cost

DATA SOURCE:

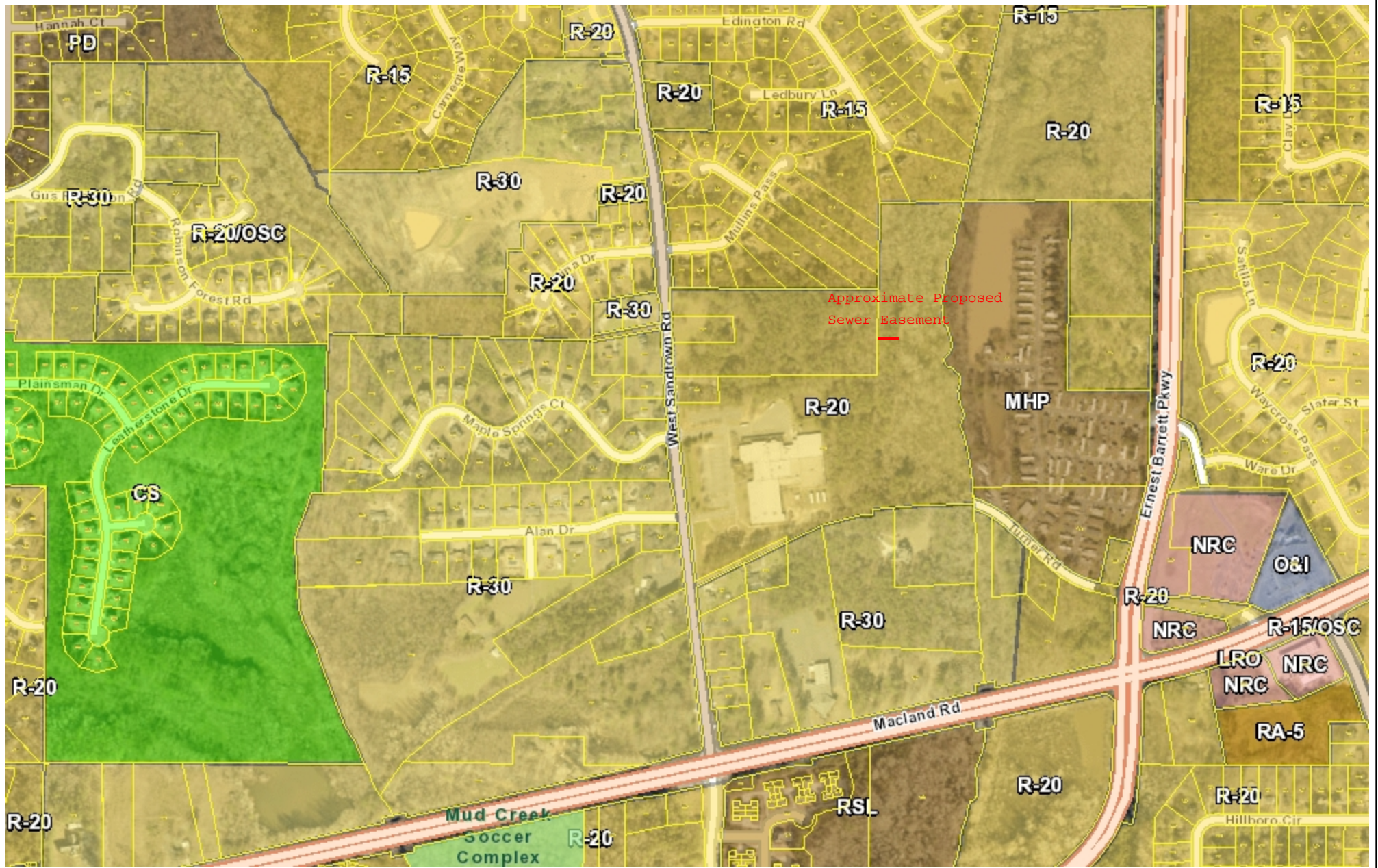
Marc Smith

Nick Parker

Board Attorney



Cobb County Georgia Online Mapping



1,504.7 0 752.33 1,504.7 Feet

WGS_1984_Web_Mercator_Auxiliary_Sphere
© Cobb County Georgia

This map is a user generated static output from an Internet mapping site and is for reference only. Data layers that appear on this map may or may not be accurate, current, or otherwise reliable.

THIS MAP IS NOT TO BE USED FOR NAVIGATION

1: 9,028



Map Notes: