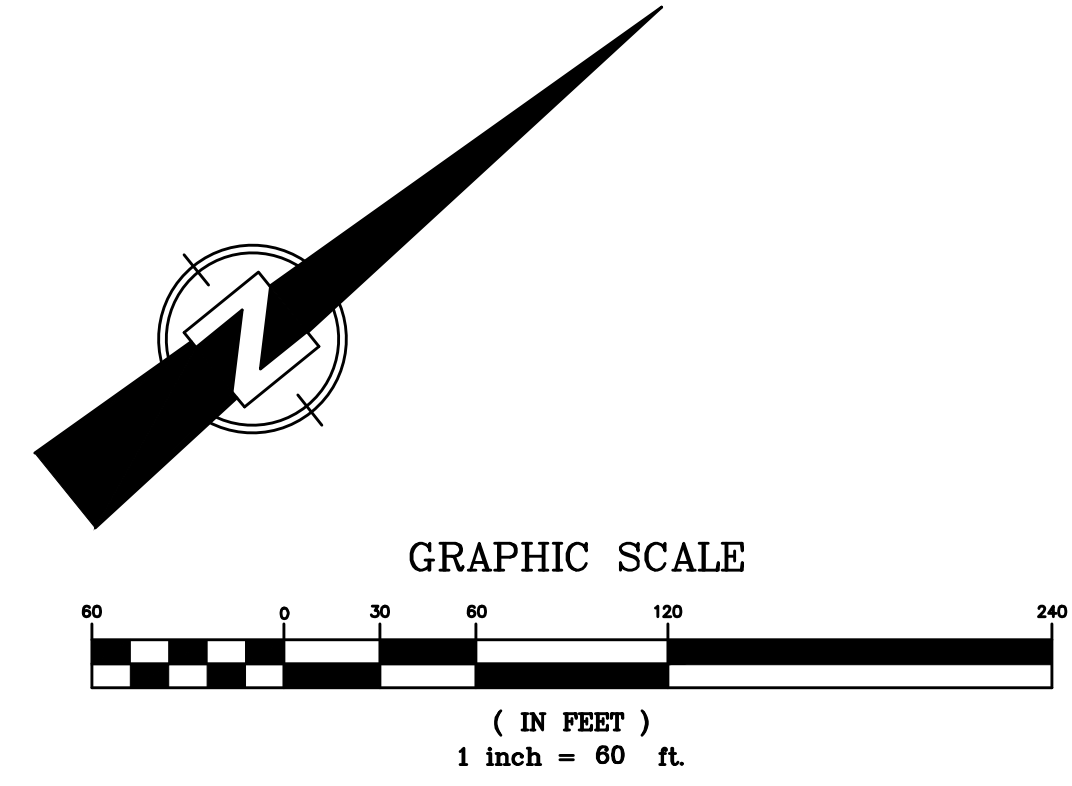
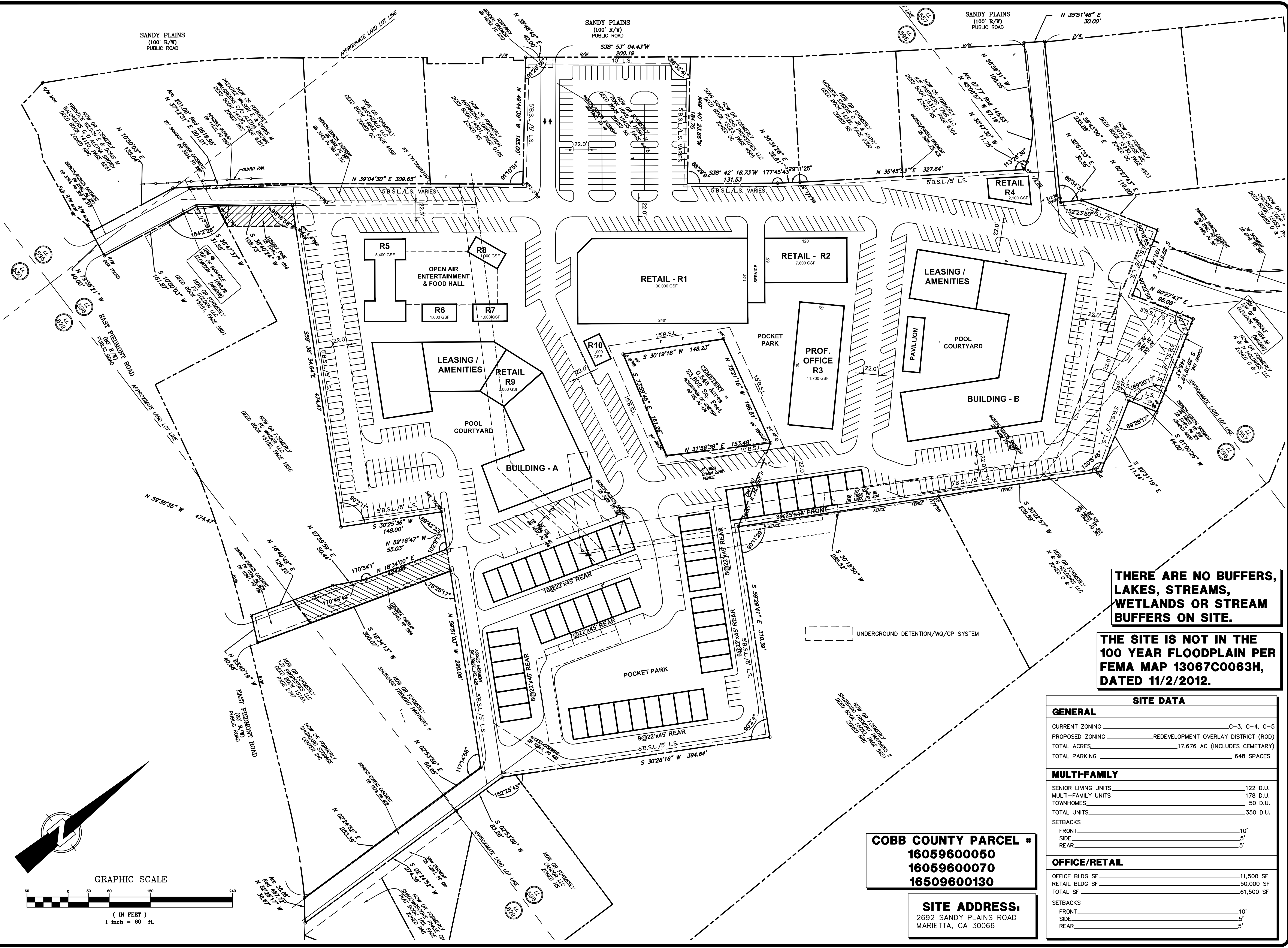


7/26/2020 11:01 AM E:\68414\2010\08\2008\REZONE.dwg JAM



COBB COUNTY PARCEL #
16059600050
16059600070
16059600130

SITE ADDRESS:
2692 SANDY PLAINS ROAD
MARIETTA, GA 30066

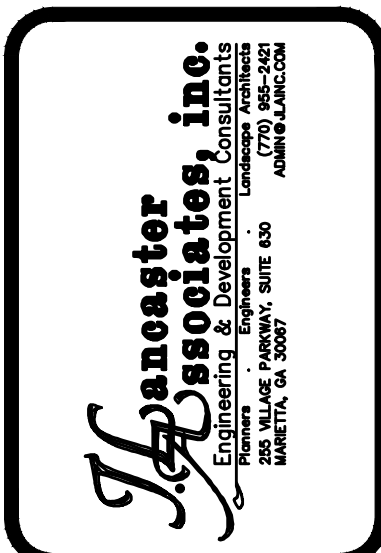
**THERE ARE NO BUFFERS,
LAKES, STREAMS,
WETLANDS OR STREAM
BUFFERS ON SITE.**

**THE SITE IS NOT IN THE
100 YEAR FLOODPLAIN PER
FEMA MAP 13067C0063H,
DATED 11/2/2012.**

SITE DATA	
GENERAL	
CURRENT ZONING	C-3, C-4, C-5
PROPOSED ZONING	REDEVELOPMENT OVERLAY DISTRICT (ROD)
TOTAL ACRES	17.676 AC (INCLUDES CEMETARY)
TOTAL PARKING	648 SPACES
MULTI-FAMILY	
SENIOR LIVING UNITS	122 D.U.
MULTI-FAMILY UNITS	178 D.U.
TOWNHOMES	50 D.U.
TOTAL UNITS	350 D.U.
SETBACKS	
FRONT	10'
SIDE	5'
REAR	5'
OFFICE/RETAIL	
OFFICE BLDG SF	11,500 SF
RETAIL BLDG SF	50,000 SF
TOTAL SF	61,500 SF
SETBACKS	
FRONT	10'
SIDE	5'
REAR	5'

REVISIONS	BY

THIS DRAWING IS THE PROPERTY OF THE ENGINEER AND MAY NOT BE USED OR REPRODUCED WITHOUT HIS WRITTEN PERMISSION



RE-ZONING PLAN
ATLANTIC RESIDENTIAL
3500 LENOX RD, STE. 1250
ATLANTA, GA 30326
404-591-2452

SPRAYBERRY CROSSING
LL: 557,569,595 & 629, 16TH DISTRICT, COBB COUNTY, GEORGIA

DRAWN BY	X
CHECKED BY	JL
DATE	07-29-20
SCALE	1" = 60'
JOB NO.	20-008
CAD FILE	20008-REZONE.dwg

SHEET
1