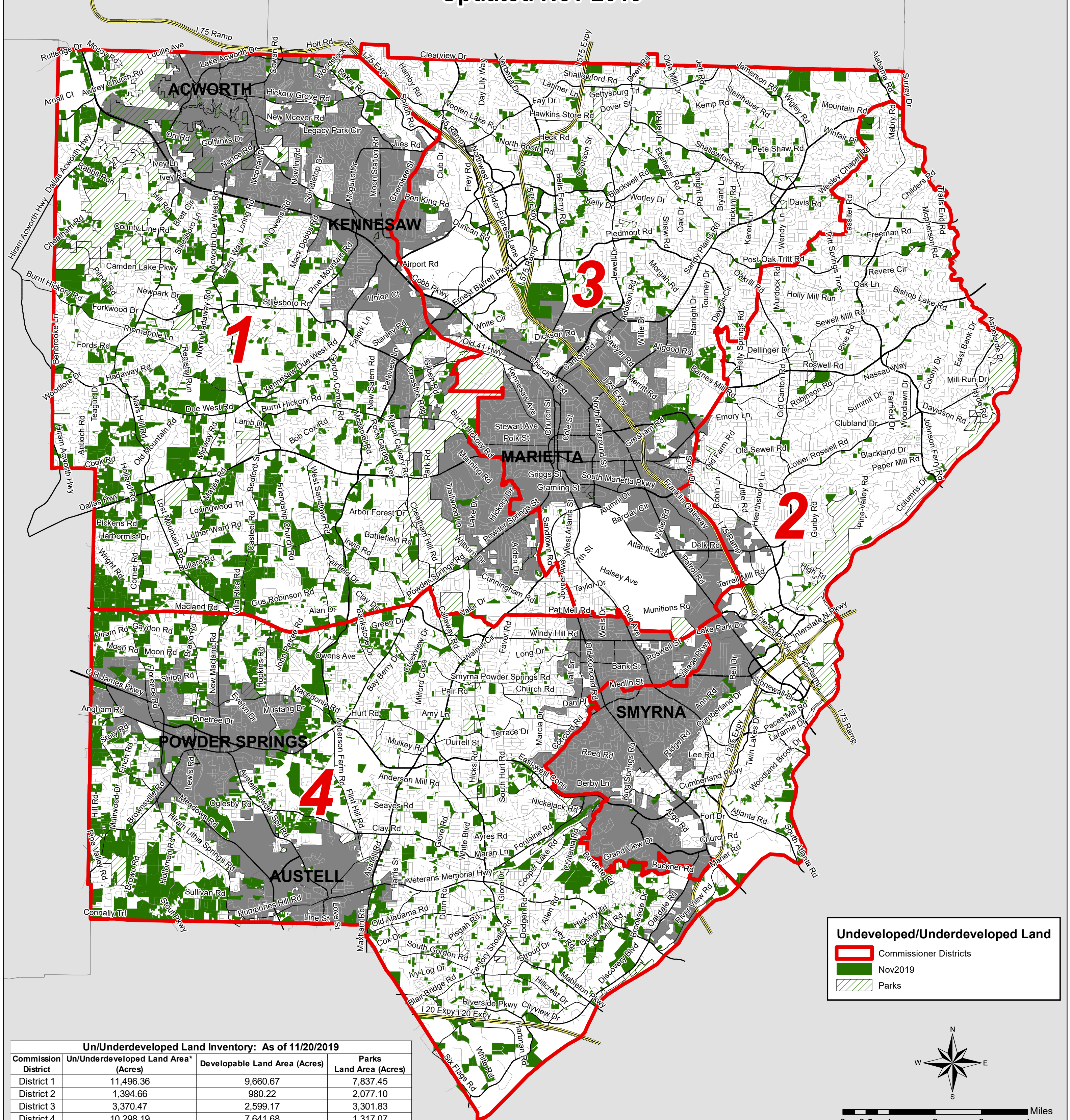


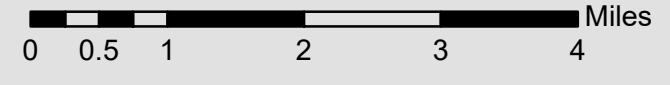
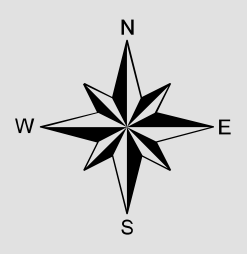
Cobb County Un/Underdeveloped Land

Updated Nov 2019



Undeveloped/Underdeveloped Land

- Commissioner Districts
- Nov2019
- Parks



Un/Underdeveloped Land Inventory: As of 11/20/2019			
Commission District	Un/Underdeveloped Land Area* (Acres)	Developable Land Area (Acres)	Parks Land Area (Acres)
District 1	11,496.36	9,660.67	7,837.45
District 2	1,394.66	980.22	2,077.10
District 3	3,370.47	2,599.17	3,301.83
District 4	10,298.19	7,641.68	1,317.07
County	26,559.68	20,881.74	14,533.45
Commission District	Un/Underdeveloped Land % of District Total	Developable Land % of District Total*	Parks Land % of District Total
District 1	17.3%	14.6%	11.8%
District 2	3.2%	2.3%	4.9%
District 3	6.5%	5.0%	6.4%
District 4	17.3%	12.8%	2.2%
County	12.0%	9.5%	6.6%

* Developable Land includes all undeveloped or underdeveloped properties or portion of properties that are not within the FEMA 100 Year Flood Zone and/or Wetlands

Cobb County...Expect the Best!

NO WARRANTY: Although every effort has been made to insure the correctness and completeness of this map as of its date of publication, THERE IS NO WARRANTY, EITHER EXPRESSED OR IMPLIED, respecting the accuracy of this map or its MERCHANTABILITY or its FITNESS for any particular purpose, and the purchaser or other user of this map, in consideration of receiving this map for the agreed price, with or without cost, as the case may be, agrees to make no claim upon Cobb County or any other party for any damages which may arise from use of this map or reliance upon the information contained therein.